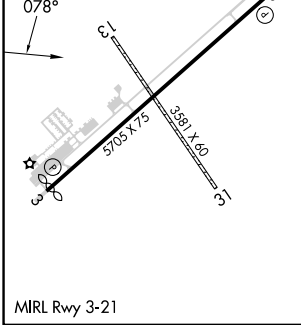
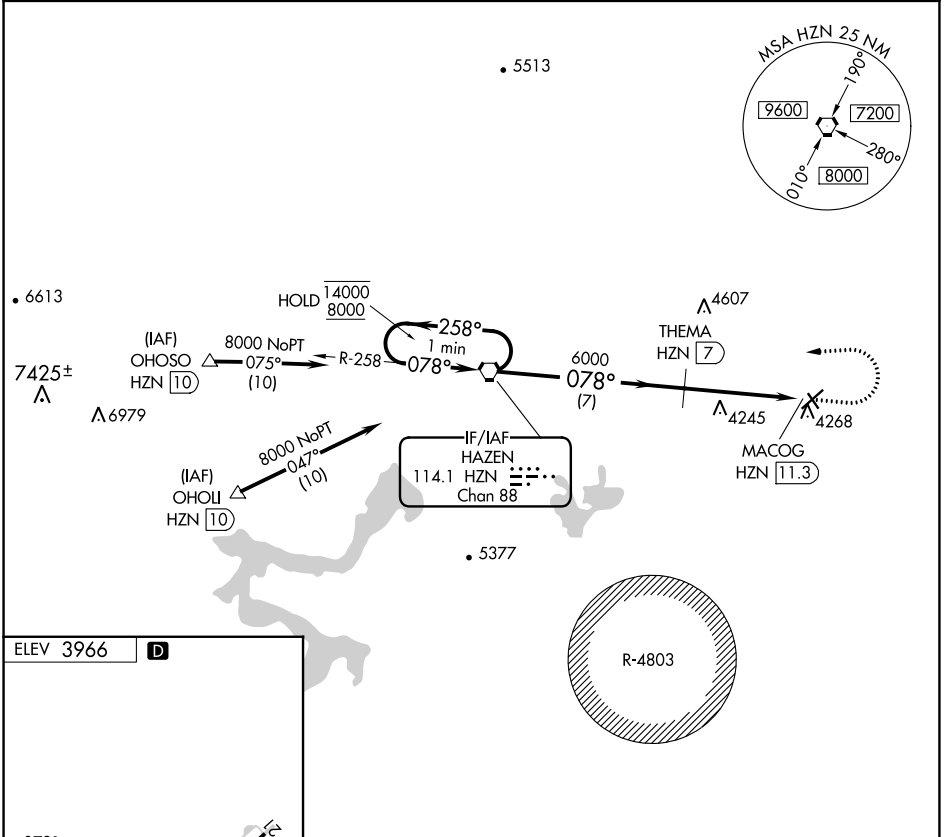


VORTAC HZN 114.1 Chan 88	APP CRS 078°	Rwy Idg TDZE N/A Apt Elev 3966
--	------------------------	--

VOR-B
FALLON MUNI (F'LX)

DME required. ▼ Circling NA to Rwy 13 and 31. Circling to Rwy 21 NA at night. When local altimeter not received, use Fallon NAS altimeter setting.	MISSED APPROACH: Climb to 6100 then climbing left turn to 8000 direct HZN VORTAC and hold.
---	--

AWOS-AV 118.25	KNFL ATIS* 370.925	NAVY FALLON APP CON* 120.85 360.2	UNICOM 122.8 (CTAF)
--------------------------	------------------------------	---	-------------------------------



One Minute Holding Pattern	HZN VORTAC		6100	8000	HZN
	14000 ← 258° 8000 → 078°		↑ 6100	↻ 8000	◻ HZN
6000 *		THEMA HZN [7]			
7 NM		4.3 NM			
MACOG HZN [11.3]					
CATEGORY	A	B	C	D	
◻ CIRCLING	4620-1	654 (700-1)	4620-1¾ 654 (700-1¾)	4620-2 654 (700-2)	

SW-4, 28 NOV 2024 to 26 DEC 2024

SW-4, 28 NOV 2024 to 26 DEC 2024