

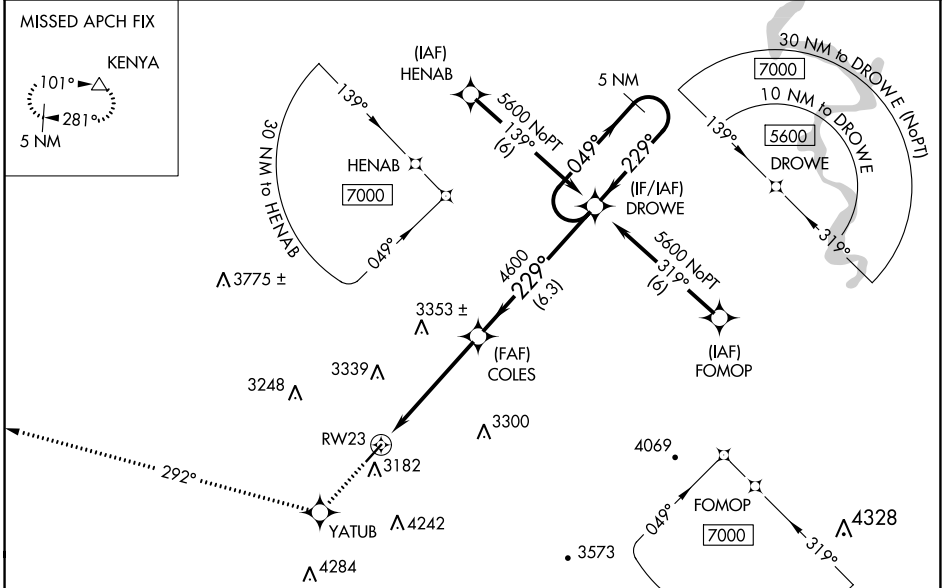
WAAS CH 50207 W23A	APP CRS 229°	Rwy Idg 4743 TDZE 2856 Apt Elev 2857
--	------------------------	---

RNAV (GPS) RWY 23

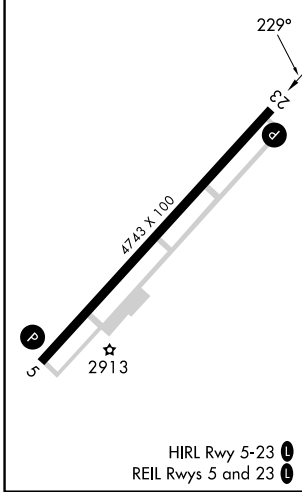
MERCER COUNTY (BLF)

RNP APCH.	MISSED APPROACH: Climb to 6000 direct YATUB and via track 292° to KENYA and hold.
<p>▼ VDP NA when using Beckley altimeter setting. When local altimeter setting not received, use Beckley altimeter setting and increase all DA 443 feet and all MDA 460 feet; increase LPV all Cats visibility to 2½ miles, LNAV Cat A visibility to 1¼ miles, Cat B to 1½ miles and Cat C and D to 3 miles.</p>	

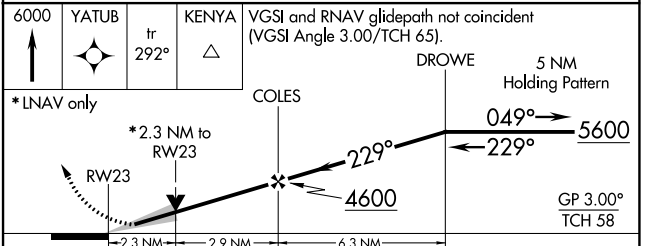
ASOS 132.725	INDIANAPOLIS CENTER 126.575 257.85	CTAF 122.9
------------------------	--	----------------------



ELEV 2857	D TDZE 2856
-----------	-------------



6000	YATUB	Kenya	VGSI and RNAV glidepath not coincident (VGSI Angle 3.00/TCH 65).
↑	✧	△	



CATEGORY	A	B	C	D
LPV DA	3156-1 300 (300-1)			
LNAV MDA	3640-1 784 (800-1)	3640-1¼ 784 (800-1¼)	3640-2¼ 784 (800-2¼)	3640-2½ 784 (800-2½)

NE-4, 28 NOV 2024 to 26 DEC 2024

NE-4, 28 NOV 2024 to 26 DEC 2024