

WAAS CH 87100 W26A	APP CRS 262°	Rwy Idg TDZE 5380 Apt Elev 5446	6803
--	------------------------	---	-------------

RNAV (GPS) RWY 26

GRANT COUNTY (SVC)

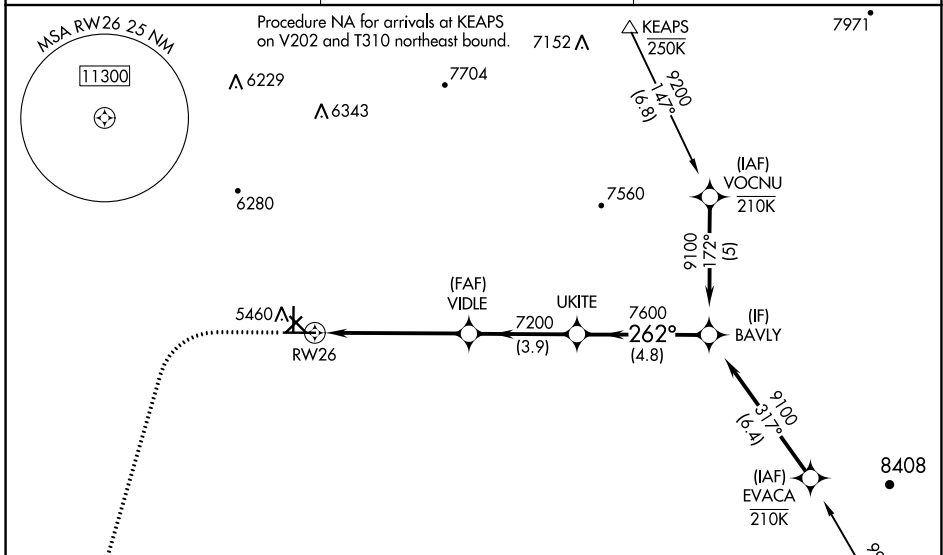
RNP APCH-GPS.

⚠ Circling NA to Rwys 3, 12, 17, 21, 30 and 35. Inop table does not apply to LPV and LNAV/VNAV. For uncompensated Baro-VNAV systems, LNAV/VNAV NA below -25°C or above 54°C.

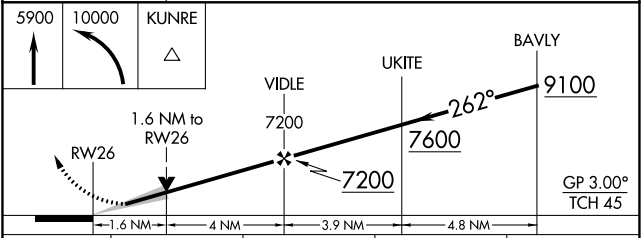
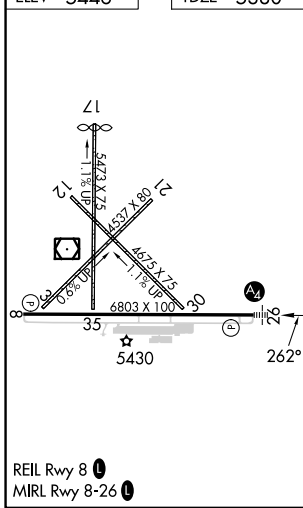
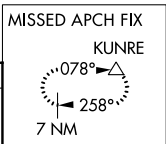
MALS **A**

MISSED APPROACH: Climb to 5900 then climbing left turn to 10000 direct KUNRE and hold.

AWOS-3 126.725	ALBUQUERQUE CENTER 134.45 327.15	UNICOM 122.8 (CTAF) 1
--------------------------	--	--



ELEV 5446	TDZE 5380
------------------	------------------



CATEGORY	A	B	C	D
LPV DA		5630-3/4	250 (200-3/4)	
LNAV/VNAV DA		5630-3/4	250 (200-3/4)	
LNAV MDA	5940-3/4	560 (500-3/4)	5940-1 3/8	560 (500-1 3/8)
C CIRCLING	5940-1 494 (500-1)	5960-1 514 (600-1)	6100-1 3/4 654 (700-1 3/4)	6740-3 1294 (1300-3)

SW-1, 28 NOV 2024 to 26 DEC 2024

SW-1, 28 NOV 2024 to 26 DEC 2024