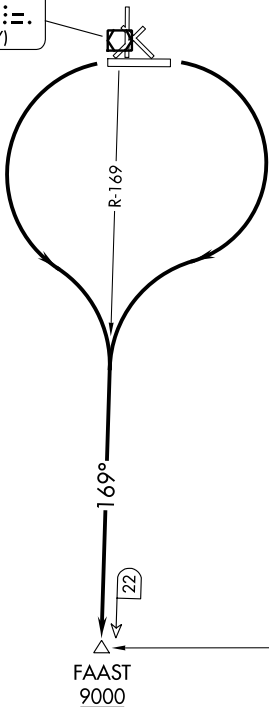


ALBUQUERQUE CENTER
134.45 327.15
AWOS-3
126.725

SILVER CITY
115.75 SVC
Chan 104(Y)



DEMING
108.6 DMN
Chan 23

FAAST
9000

SW-1, 28 NOV 2024 to 26 DEC 2024

SW-1, 28 NOV 2024 to 26 DEC 2024

TAKEOFF MINIMUMS

Rwys 3, 12, 17, 21, 30, 35: NA-Environmental.
Rwys 8, 26: Standard.

TAKEOFF OBSTACLE NOTES

Rwy 8: Vegetation beginning 225' from DER, 436' left of centerline, 13' AGL/5390' MSL.
Rwy 26: Trees beginning 45' from DER, 452' left of centerline, up to 8' AGL/5390' MSL.

NOTE: Chart not to scale.

DEPARTURE ROUTE DESCRIPTION

TAKEOFF RUNWAY 8: Climbing right turn to intercept the SVC VOR/DME R-169 to FAAST. Cross FAAST at or above 9000 before proceeding on course.

TAKEOFF RUNWAY 26: Climbing left turn to intercept the SVC VOR/DME R-169 to FAAST. Cross FAAST at or above 9000 before proceeding on course.