

LOC/DME I-JEF <b>110.5</b> Chan 42	APP CRS <b>304°</b>	Rwy Idg TDZE Apt Elev	<b>6000</b> <b>549</b> <b>549</b>
--	------------------------	-----------------------------	---

# ILS or LOC RWY 30

JEFFERSON CITY MEML (JEF)

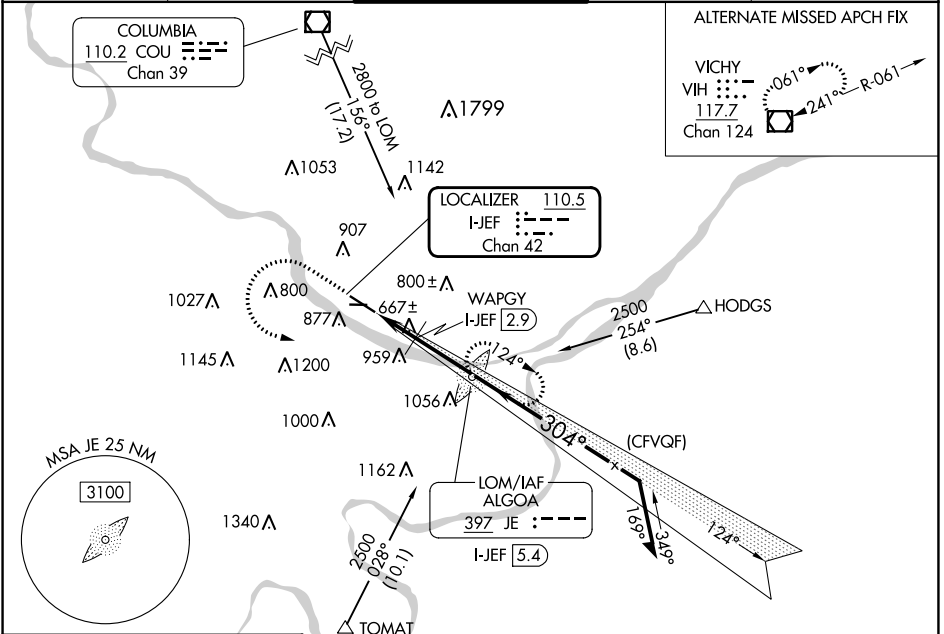
ADF required.

MALSR

▼ Circling Rwy 9 NA at night. For inop ALS increase S-LOC 30  
 ▲ Cats C/D visibility to 1 3/4 SM and WAPGY fix minimums:  
 S-LOC 30 Cats C/D visibility to 1 SM.

MISSED APPROACH: Climb to 1500 then climbing left turn to 2800 direct ALGOA LOM and hold, continue climb-in-hold to 2800.

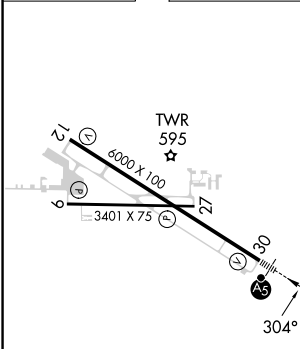
ASOS <b>133.625</b>	MIZZU APP CON <b>124,375 353,925</b>	JEFFERSON CITY TOWER* <b>125.6 (CTAF) 0</b>	GND CON <b>121.7</b>	UNICOM <b>122.95</b>
------------------------	---	--	-------------------------	-------------------------



NC-3, 28 NOV 2024 to 26 DEC 2024

NC-3, 28 NOV 2024 to 26 DEC 2024

ELEV 549	TDZE 549
----------	----------



CATEGORY	A	B	C	D
S-ILS 30	749-1/2 200 (200-1/2)			
S-LOC 30	1160-1/2	611 (700-1/2)	1160-1 3/8	611 (700-1 3/8)
<b>CIRCLING</b>	1280-1	731 (800-1)	1320-2 1/4 771 (800-2 1/4)	1560-3 1011 (1100-3)
WAPGY FIX MINIMUMS				
S-LOC 30	920-1/2	371 (400-1/2)	920-5/8	371 (400-5/8)
<b>CIRCLING</b>	1280-1	731 (800-1)	1320-2 1/4 771 (800-2 1/4)	1560-3 1011 (1100-3)

HIRL Rwy 12-30  
 MIRL Rwy 9-27  
 REIL Rwys 9, 12, and 27

FAF to MAP 4.2 NM

Knots	60	90	120	150	180
Min:Sec	4:12	2:48	2:06	1:41	1:24