

LOC/DME I-PUW 110.35 Chan 40(Y)	APP CRS 050°	Rwy Idg TDZE Apt Elev	7100 2567 2567
--	------------------------	-----------------------------	---


ILS or LOC RWY 5

PULLMAN/MOSCOW RGNL (PUW)

DME required.

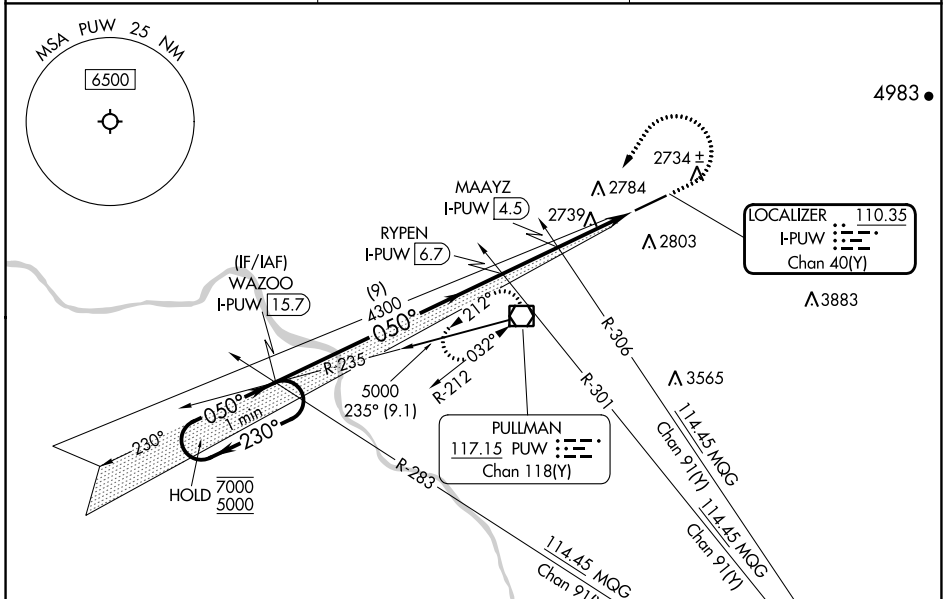
⚠ For inop ALS, increase S-ILS 5 all Cats visibility to RVR 4500 and S-LOC 5 Cat C/D visibility to 1 1/2 SM.
† RVR 1800 authorized with use of FD or AP or HUD to DA.

MALSR

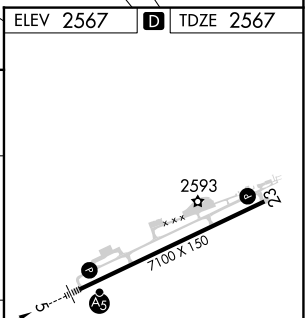
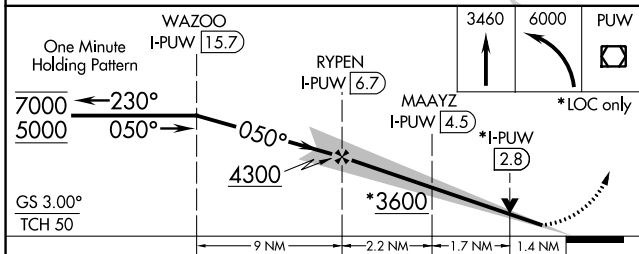


MISSED APPROACH: Climb to 3460 then climbing left turn to 6000 direct PUW VOR/DME, continue climb-in-hold to 6000.
Missed approach requires minimum climb of 222 feet per NM to 4180.

ASOS 135.675	SEATTLE CENTER 123.95 290.55	UNICOM 122.8 (CTAF) 0
------------------------	--	---------------------------------



ELEV 2567	D TDZE 2567
-----------	--------------------



CATEGORY	A	B	C	D
S-ILS 5 #†		2767/24	200 (200-1/2)	
S-ILS 5		2857/24	290 (300-1/2)	
S-LOC 5	3060/24	493 (500-1/2)	3060/50	493 (500-1)
C CIRCLING	3080-1 513 (600-1)	3120-1 553 (600-1)	3140-1 1/2 573 (600-1/2)	3420-2 3/4 853 (900-2 3/4)

REIL Rwy 23 0	
HIRL Rwy 5-23 0	
FAF to MAP 5.3 NM	
Knots	60 90 120 150 180
Min:Sec	5:18 3:32 2:39 2:07 1:46

NW-1, 28 NOV 2024 to 26 DEC 2024

NW-1, 28 NOV 2024 to 26 DEC 2024