

LOC I-JBD 108.95	APP CRS 053°	Rwy Idg 5342 TDZE 124 Apt Elev 125
----------------------------	------------------------	---

ILS or LOC RWY 5

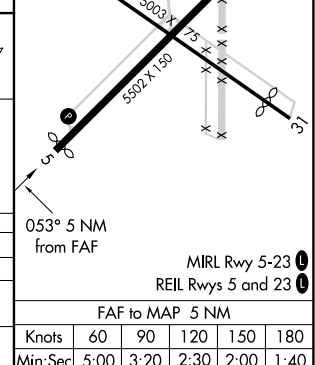
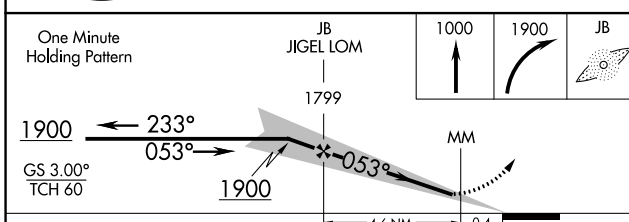
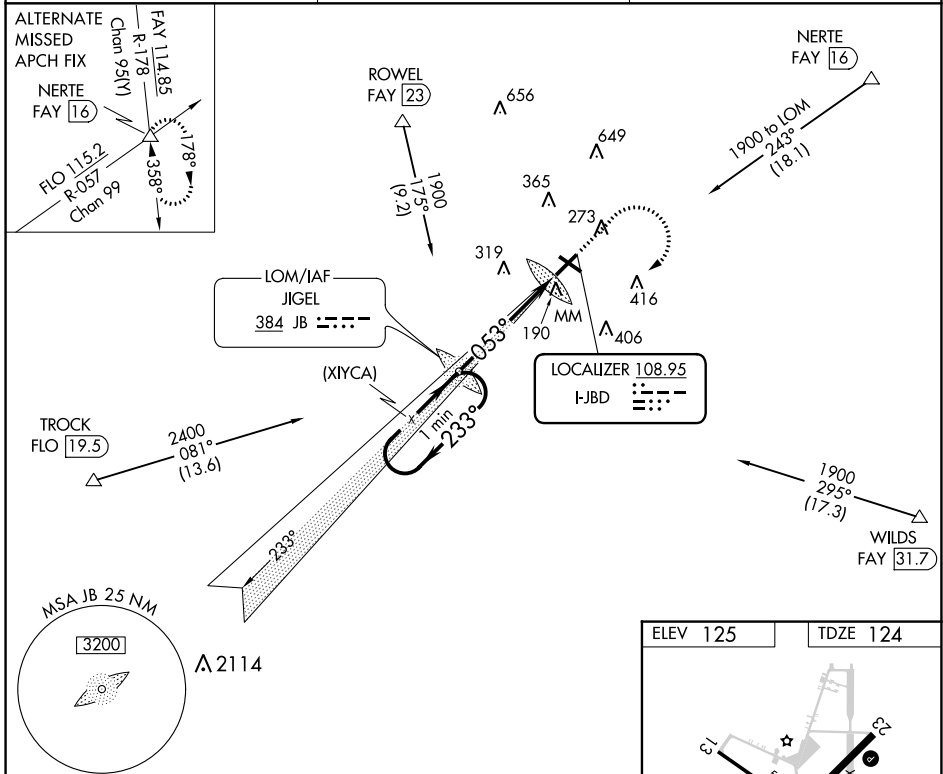
LUMBERTON RGNL (LBT)

ADF required.

When local altimeter setting not received, use Maxton altimeter setting and increase DA to 416 feet and all visibility $\frac{1}{8}$ SM; increase all MDA to 60 feet and S-LOC 5 visibility Cat C $\frac{1}{8}$ SM and Circling visibility Cat C $\frac{1}{4}$ SM. Circling Rwy 13, 31 NA at night. Autopilot coupled approach NA below 1250.

MISSED APPROACH: Climb to 1000 then climbing right turn to 1900 direct JIGEL LOM and hold.

ASOS 134.775	FAYETTEVILLE APP CON 133.0 290.25	UNICOM 122.8 (CTAF) 0
------------------------	---	---------------------------------



CATEGORY	A	B	C	D
S-ILS 5		360- $\frac{3}{4}$ 236 (300- $\frac{3}{4}$)		NA
S-LOC 5	600-1	476 (500-1)	600-1 $\frac{3}{8}$ 476 (500-1 $\frac{3}{8}$)	NA
CIRCLING	660-1	535 (600-1)	720-1 $\frac{1}{2}$ 595 (600-1 $\frac{1}{2}$)	NA

ELEV 125	TDZE 124
Knots: 60 90 120 150 180	
Min:Sec: 5:00 3:20 2:30 2:00 1:40	

SE-2, 28 NOV 2024 to 26 DEC 2024

SE-2, 28 NOV 2024 to 26 DEC 2024