

DUKPN ONE DEPARTURE (RNAV) (DUKPN1, DUKPN) 11 JUL24

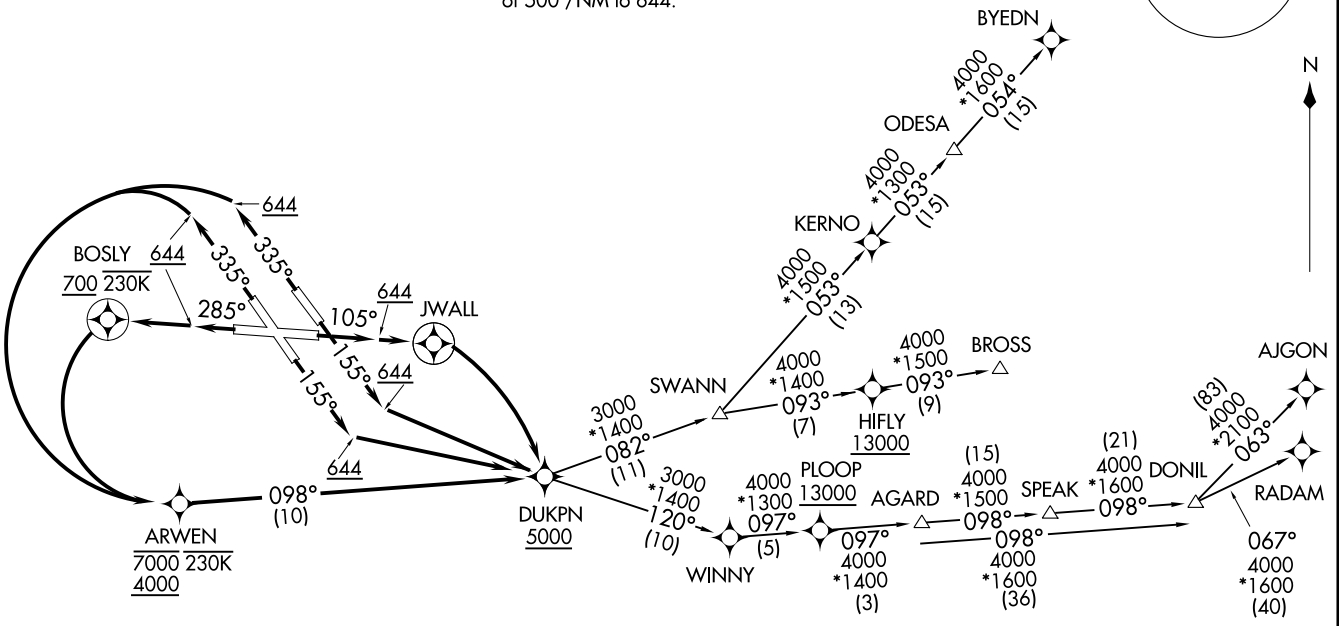
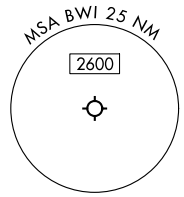
POTOMAC DEP CON
124.55 317.425
D-ATIS
115.1 127.8
CLNIC DEL
118.05
CPDLC
GND CON
121.9
BALTIMORE TOWER
119.4 257.8

RNAV 1 - DME/DME/IRU or GPS.
RADAR required for non-GPS equipped aircraft.

TOP ALTITUDE:
14000

NOTE: Jet aircraft only.

TAKEOFF MINIMUMS:
Rwys 10, 15L/R, 28, 33L/R: Standard with minimum climb
of 500'/NM to 644.



NOTE: Chart not to scale.

(CONTINUED ON FOLLOWING PAGE)

DUKPN ONE DEPARTURE (RNAV) (DUKPN1, DUKPN) 24193
AL-804 (FAA)
BALTIMORE/
WASHINGTON INTL THURGOOD MARSHALL (BWI)
BALTIMORE, MARYLAND



DEPARTURE ROUTE DESCRIPTION

TAKEOFF RUNWAY 10: Climb on heading 105° to 644, then direct JWALL, then right turn direct DUKPN to cross at or above 5000, thence...

TAKEOFF RUNWAYS 15L/R: Climb on heading 155° to 644, then left turn direct DUKPN to cross at or above 5000, thence...

TAKEOFF RUNWAY 28: Climb on heading 285° to 644, then direct BOSLY to cross at or above 700 and at or below 230K, then left turn direct ARWEN to cross between 4000 and 7000 and at or below 230K, then on track 098° to cross DUKPN at or above 5000, thence...

TAKEOFF RUNWAYS 33L/R: Climb on heading 335° to 644, then left turn direct ARWEN to cross between 4000 and 7000 and at or below 230K, then on track 098° to cross DUKPN at or above 5000, thence...

...then on assigned transition. Maintain 14000. Expect clearance to filed altitude within 10 minutes after departure.

AJGON TRANSITION (DUKPN1.AJGON)

BROSS TRANSITION (DUKPN1.BROSS)

BYEDN TRANSITION (DUKPN1.BYEDN)

DONIL TRANSITION (DUKPN1.DONIL)

RADAM TRANSITION (DUKPN1.RADAM)

SPEAK TRANSITION (DUKPN1.SPEAK)

SWANN TRANSITION (DUKPN1.SWANN)

NE-3, 28 NOV 2024 to 26 DEC 2024

NE-3, 28 NOV 2024 to 26 DEC 2024