

FIXET FOUR DEPARTURE (RNAV)  
(FIXET4.FIXET) 11JUL24

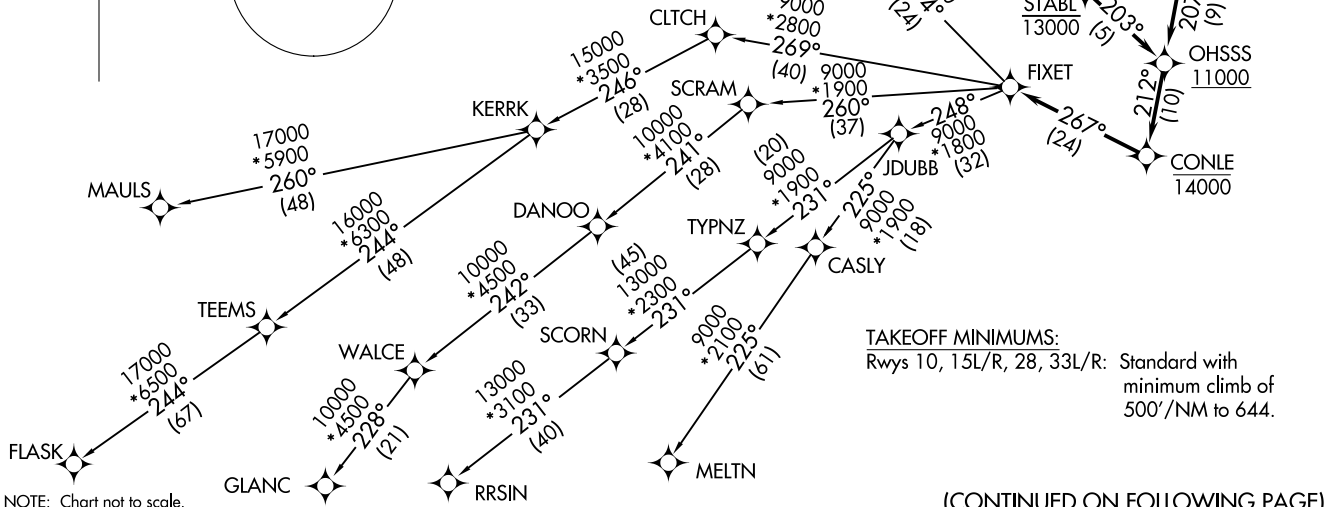
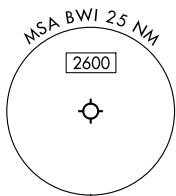
BALTIMORE/  
WASHINGTON INTL THURGOOD MARSHALL (BWI)  
BALTIMORE, MARYLAND

POTOMAC DEP CON  
124.55 317.425  
D-ATIS  
115.1 127.8  
CLNC DEL  
118.05  
CPDLC  
GND CON  
121.9  
BALTIMORE TOWER  
119.4 257.8

RNAV 1-DME/DME/IRU or GPS.  
RADAR required.

TOP ALTITUDE:  
14000

NOTE: Do not file - to be assigned by ATC.



TAKEOFF MINIMUMS:  
Rwys 10, 15L/R, 28, 33L/R: Standard with minimum climb of 500'/NM to 644.

(CONTINUED ON FOLLOWING PAGE)

(FIXET4.FIXET) 24193  
AL-804 (FAA)

BALTIMORE/  
WASHINGTON INTL THURGOOD MARSHALL (BWI)  
BALTIMORE, MARYLAND

# FIXET FOUR DEPARTURE (RNAV)



## DEPARTURE ROUTE DESCRIPTION

TAKEOFF RWY 10: Climb on heading 105° to 644, then direct JWALL, then right turn direct BEWEE, then on track 207° to cross OHSSS at or above 11000, thence . . . .

TAKEOFF RWY 15L: Climb on heading 155° to 644, then direct GAGLR, then on track 149° to BEWEE, then on track 207° to cross OHSSS at or above 11000, thence . . . .

TAKEOFF RWY 15R: Climb on heading 155° to 644, then direct KEMMP, then on track 145° to BEWEE, then on track 207° to cross OHSSS at or above 11000, thence . . . .

TAKEOFF RWY 28: Climb on heading 285° to 644, then direct BOSLY to cross at or above 700 and at or below 230K, then left turn direct SUGGS to cross at or below 7000, then on track 141° to cross STABL at or below 13000, then on track 203° to cross OHSSS at or above 11000, thence . . . .

TAKEOFF RWY 33L/R: Climb on heading 335° to 644, then left turn direct SUGGS to cross at or below 7000, then on track 141° to cross STABL at or below 13000, then on track 203° to cross OHSSS at or above 11000, thence . . . .

. . . . on track 212° to cross CONLE at or below 14000, then on track 267° to FIXET, then on assigned transition. Maintain 14000. Expect clearance to filed altitude within 10 minutes after departure.

FLASK TRANSITION (FIXET4.FLASK):

GLANC TRANSITION (FIXET4.GLANC):

MAULS TRANSITION (FIXET4.MAULS):

MELTN TRANSITION (FIXET4.MELTN):

OTTO TRANSITION (FIXET4.OTTO):

RAMAY TRANSITION (FIXET4.RAMAY):

RRSIN TRANSITION (FIXET4.RRSIN):

NE-3, 28 NOV 2024 to 26 DEC 2024

NE-3, 28 NOV 2024 to 26 DEC 2024