

LOC I-BAL 109.7	APP CRS 105°	Rwy Idg 9953 TDZE 143 Apt Elev 143
---------------------------	------------------------	---

BALTIMORE/
WASHINGTON INTL THURGOOD MARSHALL (BWI) **ILS RWY 10 (SA CAT I)**

RADAR required for procedure entry.
DME or RADAR required.

ALSF-2

MISSED APPROACH: Climb to 2500 on BAL VORTAC
R-105 to HURTZ/BAL 12.3 DME/RADAR and hold.

Requires specific OPSPEC, MSPEC,
or LOA approval and use of HUD to DH.



D-ATIS 115.1 127.8	POTOMAC APP CON 119.0 282.275 (020°-100°) 124.55 317.425 (101°-130°)	119.7 290.475 (131°-180°) 128.7 307.9 (181°-019°)	BALTIMORE TOWER 119.4 257.8	GND CON 121.9	CLNC DEL 118.05
------------------------------	--	--	---------------------------------------	-------------------------	---------------------------

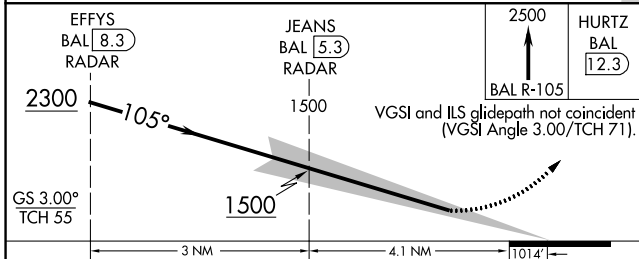
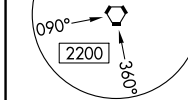
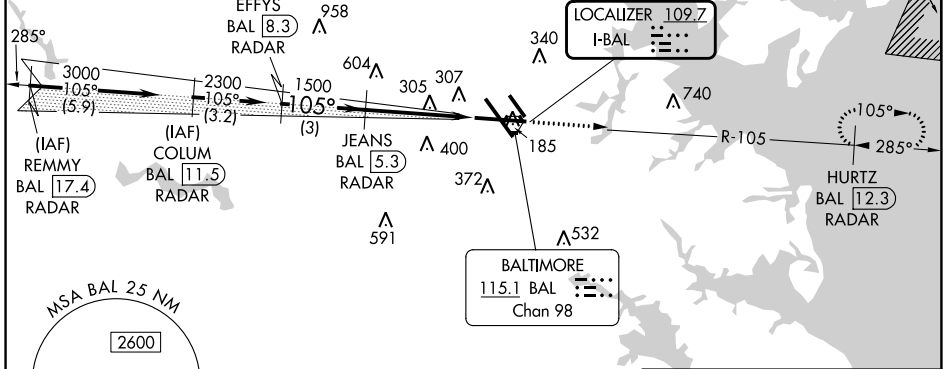
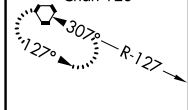
ALTERNATE MISSED
APCH FIX

WESTMINSTER

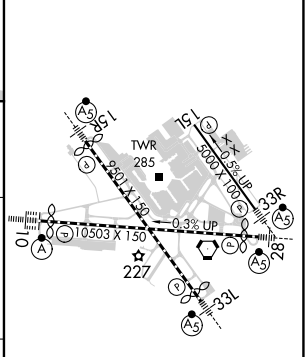
EMI ---

117.9

Chan 126



ELEV 143	D TDZE 143
----------	-------------------



CATEGORY	A	B	C	D
S-ILS 10		RA 188/14	150 DA 293	

**SA CATEGORY I ILS - SPECIAL AIRCREW
& AIRCRAFT CERTIFICATION REQUIRED**

TDZ/CL Rwy 10 and 33L
REIL Rwy 15L and 33R
HIRL all Rwys