

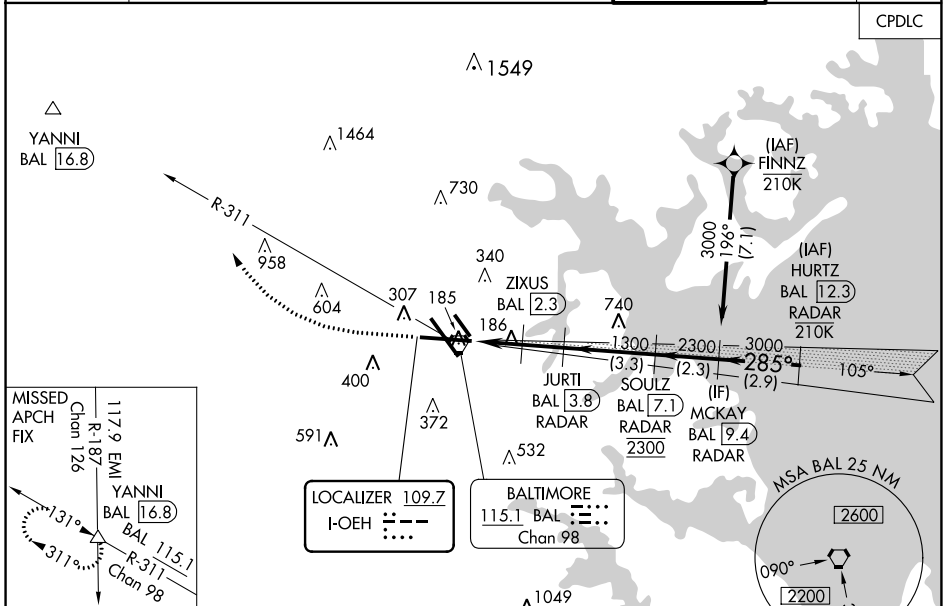
LOC I- OE H	APP CRS	Rwy Idg	9803
109.7	285°	TDZE	143
		Apt Elev	143

BALTIMORE/
WASHINGTON INTL THURGOOD MARSHALL (BWI)

ILS or LOC RWY 28

DME or RADAR required.		MALSR	MISSED APPROACH: Climb to 1500 then climbing right turn to 2600 on heading 319° and BAL VORTAC R-311 to YANNI INT/ BAL 16.8 DME and hold.
<p>▼ For inop ALS, increase S-LOC 28 Cat C/D visibility to 1½ SM and increase ZIXUS fix S-LOC 28 Cat C/D visibility to RVR 4500.</p> <p>▲ *RVR 1800 authorized with use of FD or AP or HUD to DA.</p>			

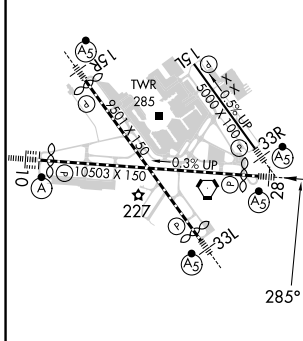
D-ATIS	POTOMAC APP CON	BALTIMORE TOWER	GND CON	CLNC DEL
115.1 127.8	119.0 282.275 (020°-100°) 119.7 290.475 (131°-180°) 124.55 317.425 (101°-130°) 128.7 307.9 (181°-019°)	119.4 257.8	121.9	118.05



NE-3, 28 NOV 2024 to 26 DEC 2024

NE-3, 28 NOV 2024 to 26 DEC 2024

ELEV 143	D	TDZE 143
-----------------	----------	-----------------



TDZ/CL Rwy 10 and 33L
REIL Rwy 15L and 33R
HIRL all Rwy

FAF to MAP 3.5 NM

Knots	60	90	120	150	180
Min:Sec	3:30	2:20	1:45	1:24	1:10

1500	2600	BAL	YANNI	VGSI and ILS glidepath not coincident (VGSI Angle 3.00/TCH 75).	MCKAY BAL [9.4] RADAR
↑	hdg 319°	BAL R-311	△		
		JURTI BAL [3.8] RADAR	SOULZ BAL [7.1] RADAR	3000	GS 3.00° TCH 55
		ZIXUS BAL [2.3]		285°	
CATEGORY		A	B	C	D
S-ILS 28 *		343/24 200 (200-½)			
S-LOC 28		620/24	477 (500-½)	620/50	477 (500-1)
CIRCLING		660-1	517 (600-1)	700-1½ 557 (600-1½)	880-2¼ 737 (800-2¼)
ZIXUS FIX MINIMUMS (DME REQUIRED)					
S-LOC 28		460/24 317 (400-½)			
CIRCLING		660-1	517 (600-1)	700-1½ 557 (600-1½)	880-2¼ 737 (800-2¼)

ILS or LOC RWY 28