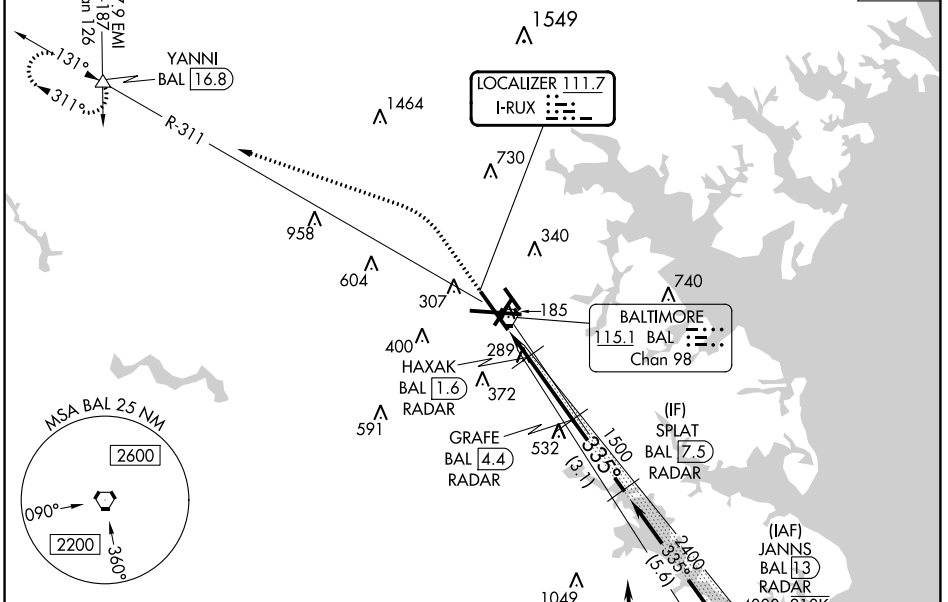


LOC I-RUX <b>111.7</b>	APP CRS <b>335°</b>	Rwy ldg TDZE Apt Elev	<b>8301</b> <b>143</b> <b>143</b>
---------------------------	------------------------	-----------------------------	---

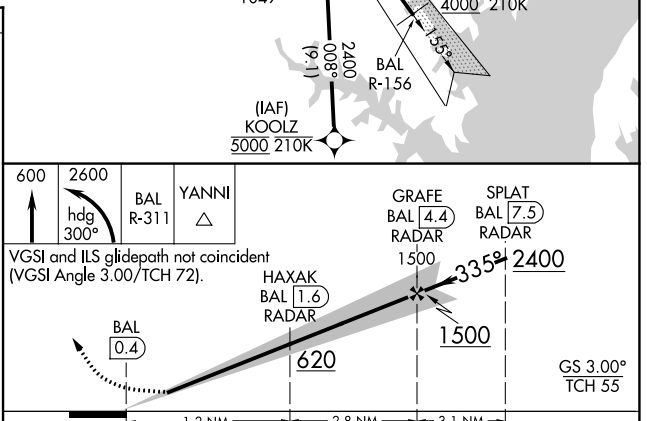
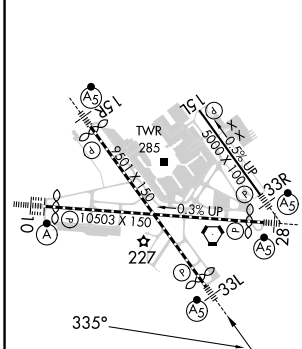
# BALTIMORE/ WASHINGTON INTL THURGOOD MARSHALL (BWI)

## ILS or LOC RWY 33L

RNP APCH - GPS. From KOOLZ.		MALSR	MISSED APPROACH: Climb to 600 then climbing left turn to 2600 on heading 300° and BAL VORTAC R-311 to YANNI INT/ BAL 16.8 DME and hold.	
RADAR required for procedure entry. DME or RADAR required.				
<p>Simultaneous approach authorized with ILS or LOC Rwy 33R. DME from BAL</p> <p>VORTAC. DME use requires simultaneous reception of I-RUX and BAL DME.</p>				
D-ATIS <b>115.1 127.8</b>	POTOMAC APP CON (020°-100°) <b>119.0 282.275</b> (101°-130°) <b>124.55 317.425</b>	(131°-180°) <b>119.7 290.475</b> (181°-019°) <b>128.7 307.9</b>	BALTIMORE TOWER <b>119.4 257.8</b>	GND CON <b>121.9</b>
				CLNC DEL <b>118.05</b>



ELEV 143	D	TDZE 143
----------	---	----------



CATEGORY	A	B	C	D
S-ILS 33L	343/18		200 (200-1/2)	
S-LOC 33L	540/24	397 (400-1/2)	540/35	397 (400-3/8)
	640-1	660-1	700-1 1/2	880-2 1/4
CIRCLING	497 (500-1)	517 (600-1)	557 (600-1 1/2)	737 (800-2 1/4)

## ILS or LOC RWY 33L

NE-3, 28 NOV 2024 to 26 DEC 2024

NE-3, 28 NOV 2024 to 26 DEC 2024