

MIDDY THREE ARRIVAL (RNAV)  
(MIDDY.MIDDY3) 05SEP24

(MIDDY.MIDDY3) 24249  
MIDDY THREE ARRIVAL (RNAV)

AL-804 (FAA)

BALTIMORE, MARYLAND

RNAV 1 - DME/DME/IRU or GPS.  
RADAR required.

NOTE: Jet aircraft only.

POTOMAC APP CON  
133.75 254.35  
BWI D-ATIS  
115.1 127.8  
MTN ATIS  
124.925

RYJON  
4000  
KBWI Ldg  
Rwy 15L

DADLE  
4000 210K

ZOEYY  
4000  
KBWI Ldg  
Rwy 15R

ZARTZ  
4000 210K

BALTIMORE/  
WASHINGTON INTL  
THURGOOD MARSHALL

FHRST  
4000  
KBWI Ldg  
Rwy 28

JUGMO  
3000  
Ldg MTN

HUTOO  
4000  
KBWI Ldg  
Rwy 10

HUNNN (3)  
LURRL

JANNS  
4000 210K  
KBWI Ldg Rwy 33L

BMTR  
4000

DRZT  
4000

DUDDS  
3000  
KBWI Ldg  
Rwy 33R

ANCRR  
4000 210K

TOGAH  
5000 210K

NAVEY  
5000 230K

SNUGI  
5000

KAPTN  
5000

MIDDY  
7000 250K

TRUTH  
10000

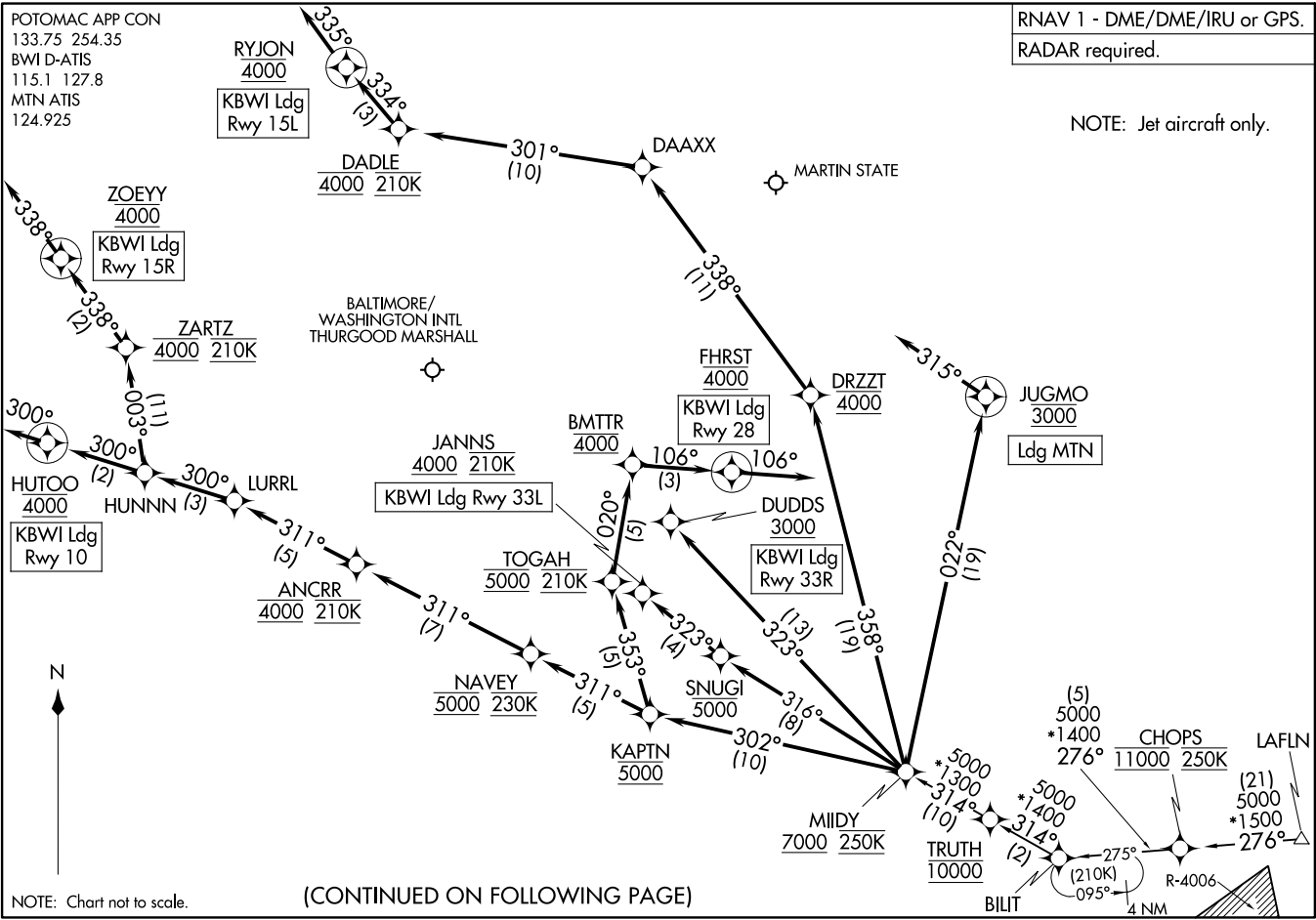
CHOPS  
11000 250K

LAFLN  
5000  
\*1500



NOTE: Chart not to scale.

(CONTINUED ON FOLLOWING PAGE)



ARRIVAL ROUTE DESCRIPTION

LAFLN TRANSITION (LAFLN.MIIDY3)

LANDING KBWI RUNWAY 10: From MIIDY on track 302° to cross KAPTN at 5000, then on track 311° to cross NAVEY at 5000 and at 230K, then on track 311° to cross ANCRR at 4000 and at 210K, then on track 311° to LURRL, then on track 300° to HUNNN, then on track 300° to cross HUTOO at 4000, then on track 300°. Expect radar vectors to final approach course.

LANDING KBWI RUNWAY 15L: From MIIDY on track 358° to cross DRZZT at 4000, then on track 338° to DAAAX, then on track 301° to cross DADLE at 4000 and at 210K, then on track 334° to cross RYJON at 4000, then on track 335°. Expect radar vectors to final approach course.

LANDING KBWI RUNWAY 15R: From MIIDY on track 302° to cross KAPTN at 5000, then on track 311° to cross NAVEY at 5000 and at 230K, then on track 311° to cross ANCRR at 4000 and at 210K, then on track 311° to LURRL, then on track 300° to HUNNN, then on track 003° to cross ZARTZ at 4000 and at 210K, then on track 337° to cross ZOEYY at 4000, then on track 338°. Expect radar vectors to final approach course.

LANDING KBWI RUNWAY 28: From MIIDY on track 302° to cross KAPTN at 5000, then on track 353° to cross TOGAH at 5000 and at 210K, then on track 020° to cross BMTTR at 4000, then on track 106° to cross FHRST at 4000, then on track 106°. Expect radar vectors to final approach course.

LANDING KBWI RUNWAY 33L: From MIIDY on track 316° to cross SNUGI at or below 5000, then on track 323° to cross JANNNS at or above 4000 and at 210K. Expect ILS or LOC Rwy 33L approach.

LANDING KBWI RUNWAY 33R: From MIIDY on track 323° to cross DUDDS at or above 3000. Expect ILS or LOC Rwy 33R approach.

LANDING KMTN: From MIIDY on track 022° to cross JUGMO at 3000, then on heading 315°. Expect radar vectors to final approach course.

NE-3, 28 NOV 2024 to 26 DEC 2024

NE-3, 28 NOV 2024 to 26 DEC 2024