

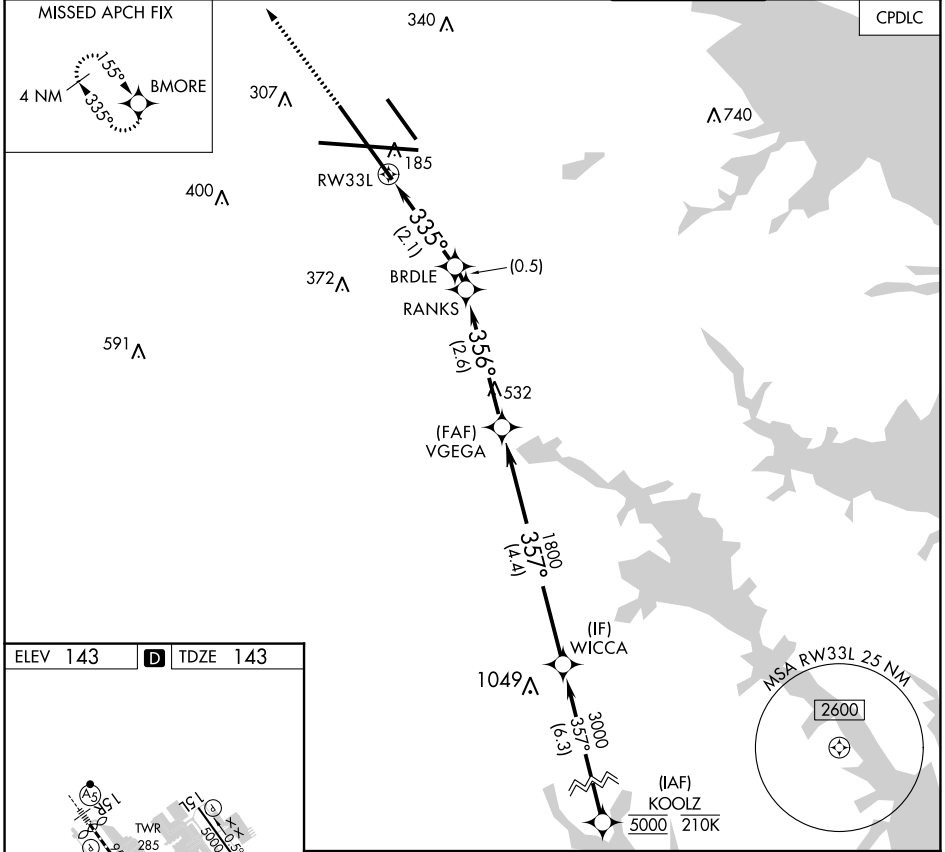
# RNAV (RNP) X RWY 33L

BALTIMORE/WASHINGTON INTL THURGOOD MARSHALL (BWI)

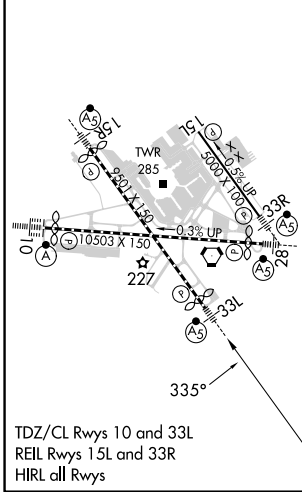
APP CRS <b>335°</b>	Rwy ldg TDZE Apt Elev	<b>8301</b> <b>143</b> <b>143</b>
------------------------	-----------------------------	---

RNP AR APCH - GPS, RF.	MALSR	MISSED APPROACH: Climb to 3000 direct BMORE and hold.
▼ For uncompensated Baro-VNAV systems, procedure NA below -11°C or above 54°C.		

D-ATIS <b>115.1 127.8</b>	POTOMAC APP CON (020°-100°) <b>119.0 282.275</b> (101°-130°) <b>124.55 317.425</b>	(131°-180°) <b>119.7 290.475</b> (181°-019°) <b>128.7 307.9</b>	BALTIMORE TOWER <b>119.4 257.8</b>	GND CON <b>121.9</b>	CLNC DEL <b>118.05</b>
------------------------------	--	--	---------------------------------------	-------------------------	---------------------------



ELEV 143	<b>D</b>	TDZE 143
----------	----------	----------



3000	BMORE	VGS1 and RNAV glidepath not coincident (VGS1 Angle 3.00/TCH 72).		WICCA
↑		BRDLE	RANKS	VEGEGA
		839	986	1800
				357°
				3000
				GP 3.00°
				TCH 55
		2.1 NM	0.5 NM	2.6 NM
				4.4 NM
CATEGORY	A	B	C	D
RNP 0.30 DA		479/26	336 (400-1/2)	
<b>AUTHORIZATION REQUIRED</b>				

NE-3, 28 NOV 2024 to 26 DEC 2024

NE-3, 28 NOV 2024 to 26 DEC 2024