

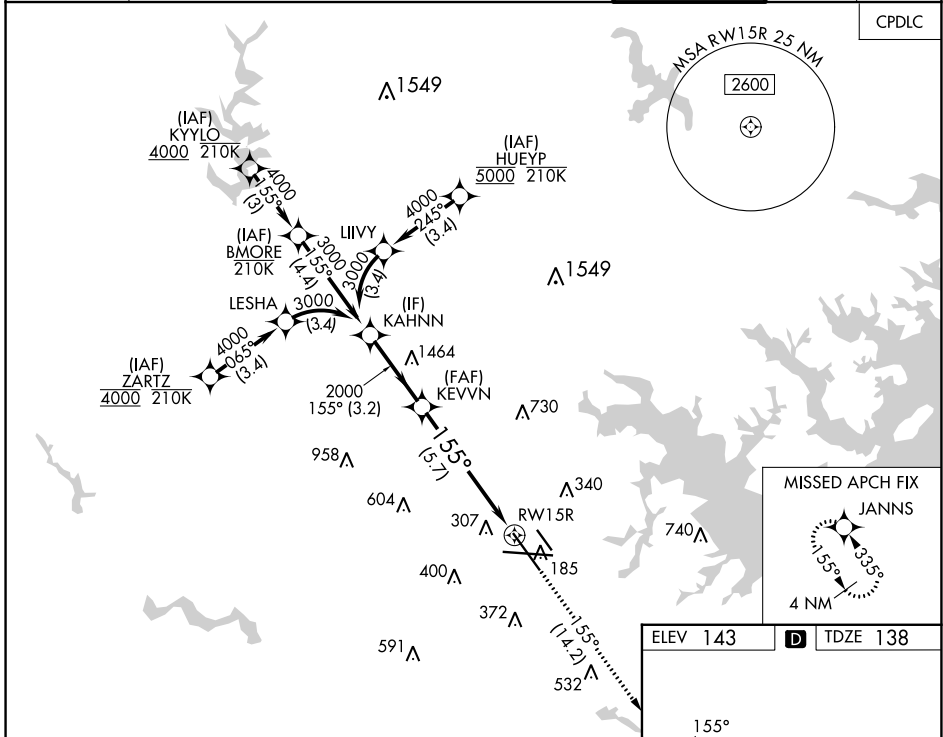
APP CRS 155°	Rwy Idg TDZE Apt Elev	8301 138 143
------------------------	-----------------------------	---

RNAV (RNP) Z RWY 15R

BALTIMORE/WASHINGTON INTL THURGOOD MARSHALL (BWI)

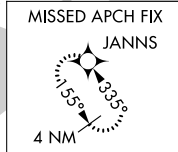
RNP AR APCH - GPS.	MALSR 	MISSED APPROACH: Climb to 2500 on track 155° to JANNIS and hold.
▼ For uncompensated Baro-VNAV systems, procedure NA below -11°C or above 54°C. Simultaneous approach authorized with Rwy 15L. For inop ALS, increase RNP 0.11 DA all Cats visibility to RVR 5500.		

D-ATIS 115.1 127.8	POTOMAC APP CON 119.0 282.275 124.55 317.425	(020°-100°) 119.7 290.475 (101°-130°) 128.7 307.9	(131°-180°) 119.4 257.8	BALTIMORE TOWER	GND CON 121.9	CLNC DEL 118.05
------------------------------	--	--	-----------------------------------	-----------------	-------------------------	---------------------------

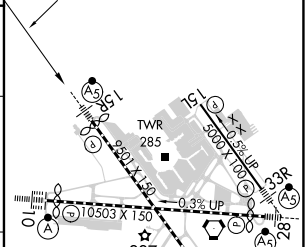
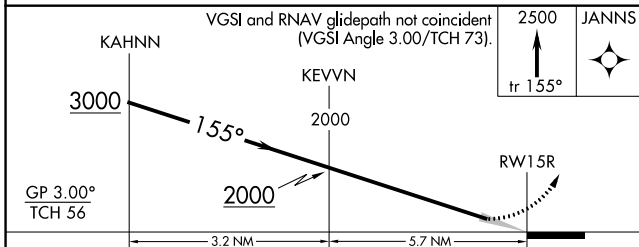


NE-3, 28 NOV 2024 to 26 DEC 2024

NE-3, 28 NOV 2024 to 26 DEC 2024



ELEV 143	D	TDZE 138
----------	----------	----------



GP 3.00° TCH 56	VGSi and RNAV glidepath not coincident (VGSi Angle 3.00/TCH 73).		2500 tr 155°	JANNIS
CATEGORY	A	B	C	D
RNP 0.11 DA		513/35	375 (400-5%)	
RNP 0.30 DA		587/45	449 (500-7%)	

AUTHORIZATION REQUIRED

TDZ/CL Rwy's 10 and 33L
REIL Rwy's 15L and 33R
HIRL all Rwy's