

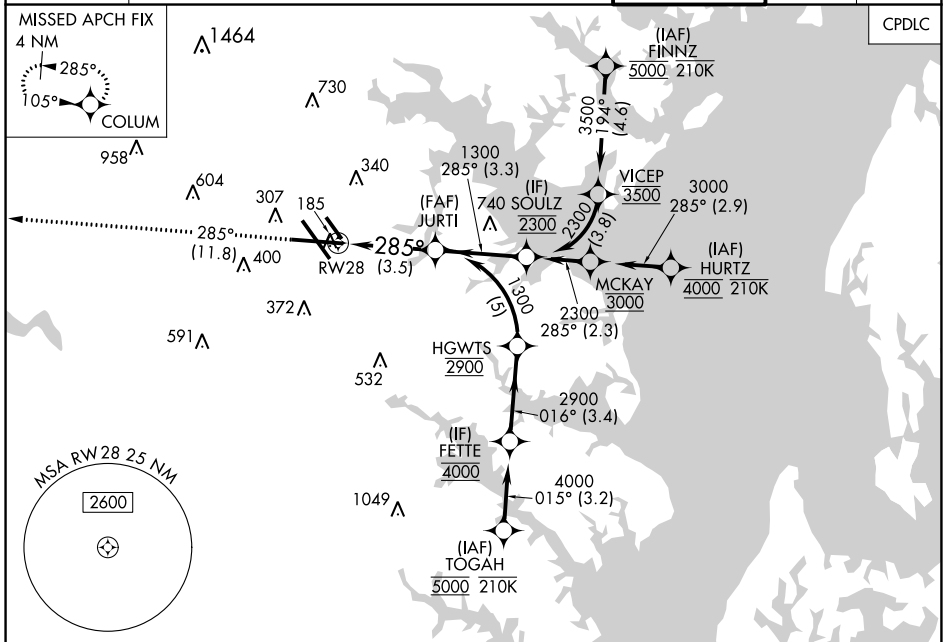
APP CRS	Rwy Idg	9803
285°	TDZE	143
	Apt Elev	143

RNAV (RNP) Z RWY 28

BALTIMORE/WASHINGTON INTL THURGOOD MARSHALL (BWI)

RNP AR APCH - GPS.	MALSR	MISSED APPROACH: Climb to 2500 on track 285° to COLUM and hold.
▼ For uncompensated Baro-VNAV systems, procedure NA below -11°C or above 54°C. For inop ALS, increase RNP 0.30 all Cats visibility to RVR 5500.		

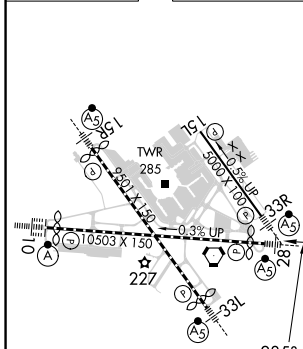
D-ATIS	POTOMAC APP CON	BALTIMORE TOWER	GND CON	CLNC DEL
115.1 127.8	(020°-100°) 119.7 290.475 (131°-180°) (101°-130°) 128.7 307.9 (181°-019°)	119.4 257.8	121.9	118.05



NE-3, 28 NOV 2024 to 26 DEC 2024

NE-3, 28 NOV 2024 to 26 DEC 2024

ELEV 143	D	TDZE 143
----------	----------	----------



2500 COLUM VGSI and RNAV glidepath not coincident (VGSI Angle 3.00/TCH 75).

JURTI 1300

See planview for multiple IF locations.

RWY 28

285°

1300

GP 3.00° TCH 55

CATEGORY	A	B	C	D
RNP 0.30 DA		521/35	378 (400-%)	

TDZ/CL Rws 10 and 33L
REIL Rws 15L and 33R
HIRL all Rws

AUTHORIZATION REQUIRED