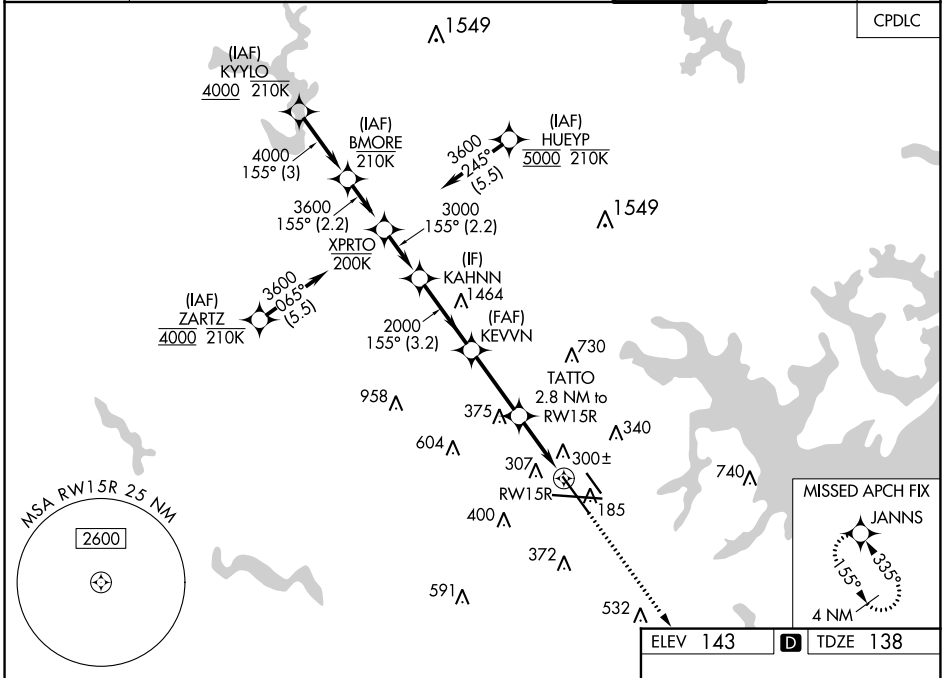


WAAS CH <b>66007</b> <b>W15B</b>	APP CRS <b>155°</b>	Rwy Idg TDZE <b>138</b> Apt Elev <b>143</b>	<b>8301</b>
--	------------------------	---	-------------

# RNAV (GPS) Y RWY 15R

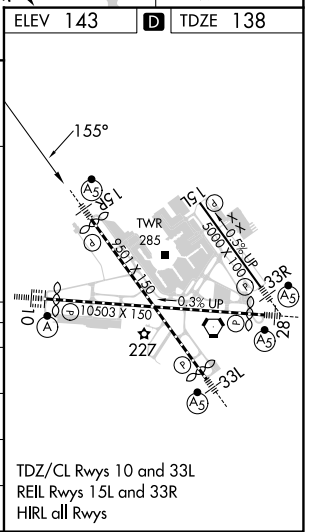
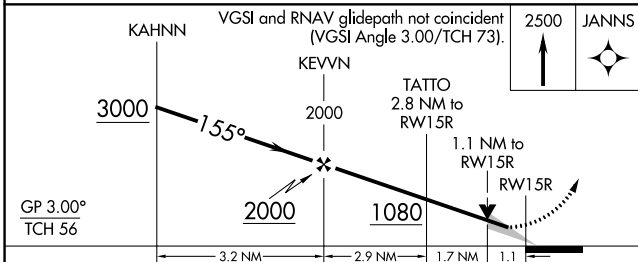
BALTIMORE/WASHINGTON INTL THURGOOD MARSHALL (BWI)

RNP APCH - GPS.		MALS R	MISSED APPROACH: Climb to 2500 direct JANNS and hold.		
<p>▼ For uncompensated Baro-VNAV systems, LNAV/VNAV NA below -11°C or above 54°C.          ▲ Simultaneous approach authorized with Rwy 15L. For inop ALS, increase LNAV/VNAV all          Cats visibility to RVR 6000. * RVR 1800 authorized with use of FD or AP or HUD to DA.</p>					
D-ATIS <b>115.1 127.8</b>	POTOMAC APP CON <b>119.0 282.275</b> (020°-100°) <b>124.55 317.425</b> (101°-130°)	<b>119.7 290.475</b> (131°-180°) <b>128.7 307.9</b> (181°-019°)	BALTIMORE TOWER <b>119.4 257.8</b>	GND CON <b>121.9</b>	CLNC DEL <b>118.05</b>



NE-3, 28 NOV 2024 to 26 DEC 2024

NE-3, 28 NOV 2024 to 26 DEC 2024



CATEGORY	A	B	C	D
LPV DA	*338/24		200 (200-½)	
LNAV/VNAV DA	557/40		419 (500-¾)	
LNAV MDA	560/24 422 (500-½)		560/40 422 (500-¾)	
CIRCLING	640-1 497 (500-1)	660-1 517 (600-1)	700-1½ 557 (600-1½)	880-2¼ 737 (800-2¼)

TDZ/CL Rwy 10 and 33L  
 REIL Rwy 15L and 33R  
 HIRL all Rwy

# RNAV (GPS) Y RWY 15R