

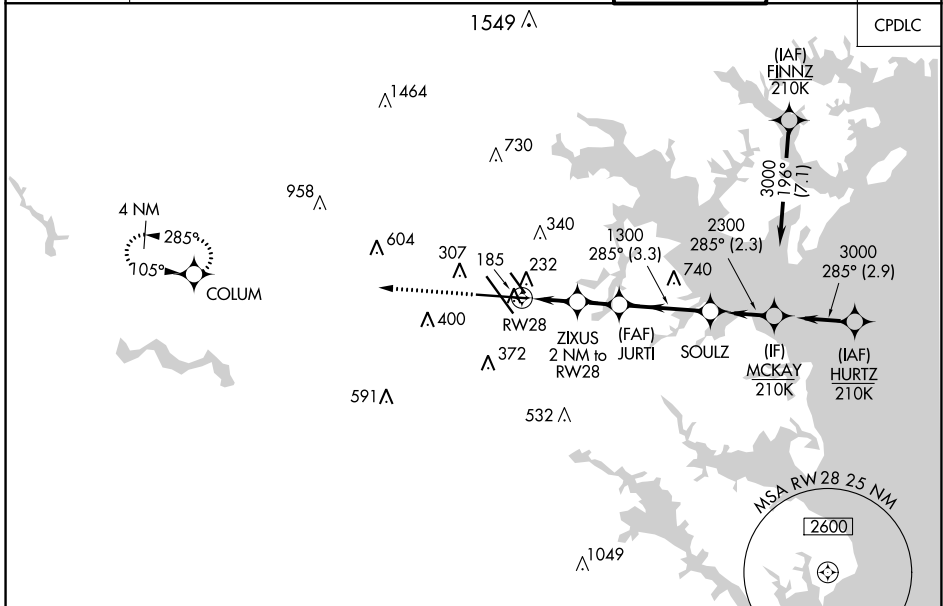
WAAS CH <b>48808</b> <b>W28A</b>	APP CRS <b>285°</b>	Rwy Idg TDZE Apt Elev	<b>9803</b> <b>143</b> <b>143</b>
--	------------------------	-----------------------------	---

# RNAV (GPS) Y RWY 28

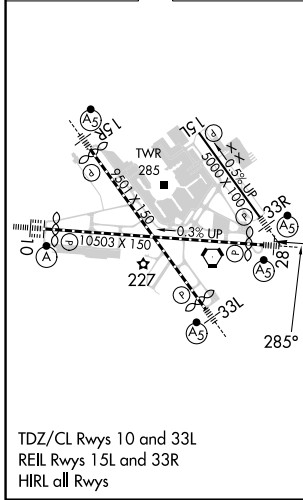
BALTIMORE/WASHINGTON INTL THURGOOD MARSHALL (BWI)

RNP APCH - GPS.	MALSR	MISSED APPROACH: Climb to 2500 direct COLUM and hold.
<p>▼ For uncompensated Baro-VNAV systems, LNAV/VNAV NA below -11°C or above 54°C. For inop ALS, increase LNAV/VNAV all Cats visibility to RVR 4000 and LNAV Cats C and D visibility to RVR 5500.</p> <p>* RVR 1800 authorized with use of FD or AP or HUD to DA.</p>		

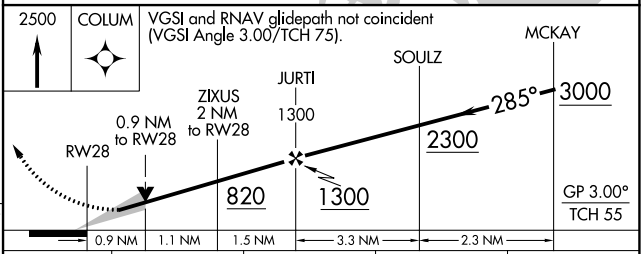
D-ATIS <b>115.1 127.8</b>	POTOMAC APP CON (020°-100°) <b>119.0 282.275</b> (101°-130°) <b>124.55 317.425</b>	(131°-180°) <b>119.7 290.475</b> (181°-019°) <b>128.7 307.9</b>	BALTIMORE TOWER <b>119.4 257.8</b>	GND CON <b>121.9</b>	CLNC DEL <b>118.05</b>
------------------------------	--	--	---------------------------------------	-------------------------	---------------------------



ELEV 143	<b>D</b>	TDZE 143
----------	----------	----------



TDZ/CL Rws 10 and 33L  
REIL Rws 15L and 33R  
HIRL all Rws



CATEGORY	A	B	C	D
LPV DA *	343/24		200 (200-½)	
LNAV/VNAV DA	395/24		252 (300-½)	
LNAV MDA	500/24	357 (400-½)	500/30	357 (400-¾)
<b>C</b> CIRCLING	660-1	517 (600-1)	700-1½ 557 (600-1½)	880-2¼ 737 (800-2¼)

BALTIMORE/WASHINGTON INTL THURGOOD MARSHALL (BWI)  
39°11'N-76°40'W

# RNAV (GPS) Y RWY 28

NE-3, 28 NOV 2024 to 26 DEC 2024

NE-3, 28 NOV 2024 to 26 DEC 2024