

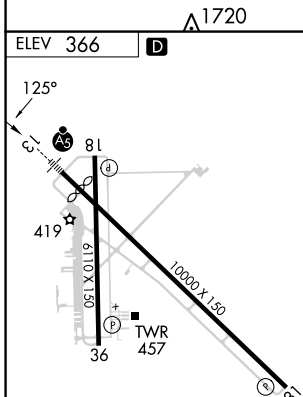
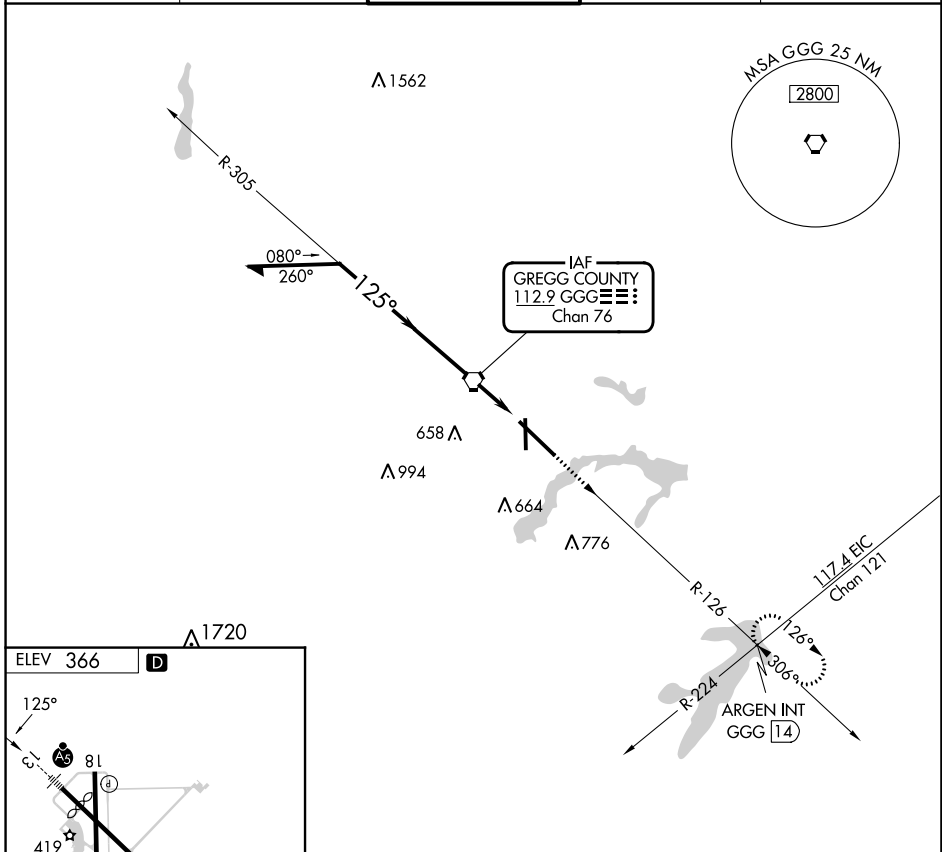
VORTAC GGG <b>112.9</b> Chan <b>76</b>	APP CRS <b>125°</b>	Rwy Idg TDZE Apt Elev	<b>N/A</b> <b>N/A</b> <b>366</b>
--	------------------------	-----------------------------	--

**VOR-A**  
EAST TEXAS RGNL (GGG)

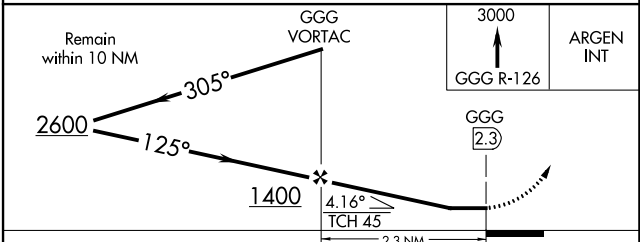
When local altimeter setting not received, use Gilmer altimeter setting and increase all MDA 60 feet and Circling visibility Cat C/D ¼ SM.

MISSED APPROACH: Climb to 3000 via GGG VORTAC R-126 to ARGEN Int/GGG 14 DME and hold.

ATIS <b>119.65</b>	LONGVIEW APP CON* <b>124.675 257.975</b>	EASTEX TOWER* <b>119.2 (CTAF) 0377.05</b>	GND CON <b>121.6</b>	UNICOM <b>122.95</b>
-----------------------	---	--	-------------------------	-------------------------



HIRL Rwy 13-31  
MIRL Rwy 18-36



FAF to MAP 2.3 NM					
Knots	60	90	120	150	180
Min:Sec	2:18	1:32	1:09	0:55	0:46
CATEGORY	A	B	C	D	
CIRCLING	860-1	494 (500-1)	980-1¾ 614 (700-1¾)	1080-2¼ 714 (800-2¼)	

SC-2, 28 NOV 2024 to 26 DEC 2024

SC-2, 28 NOV 2024 to 26 DEC 2024