

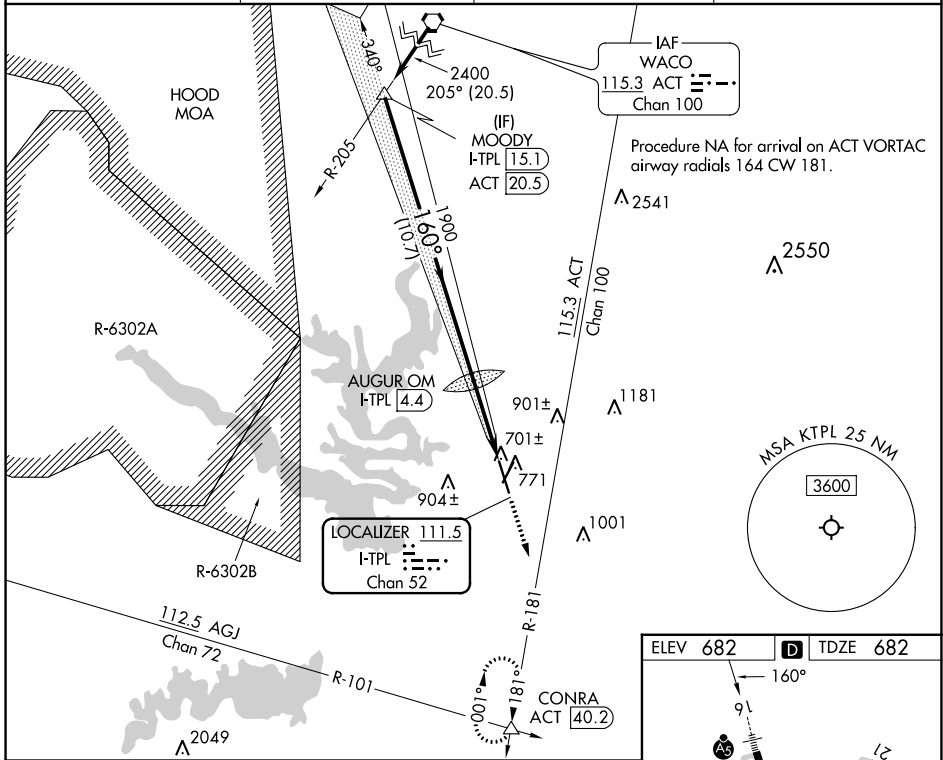
LOC/DME I-TPL 111.5 Chan 52	APP CRS 160°	Rwy Idg 7000 TDZE 682 Apt Elev 682
--	------------------------	---

ILS or LOC RWY 16

DRAUGHON-MILLER CENTRAL TEXAS RGNL (T'PL)

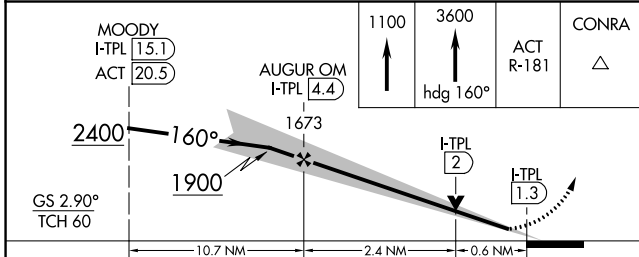
<p>⚠ NA Autopilot coupled approach NA below 990. For inop ALS, increase S-LOC 16 Cats C/D visibility to 1 SM.</p>	<p>MALSR AS</p>	<p>MISSED APPROACH: Climb to 1100 then continue climb to 3600 on heading 160° and on ACT VORTAC R-181 to CONRA INT/ACT 40.2 DME and hold, continue climb-in-hold to 3600.</p>
--	----------------------------	--

AWOS-3PT 134.975	GRAY APP CON 120.075 370.0	CINC DEL 125.9	UNICOM 123.0 (CTAF)
----------------------------	--------------------------------------	--------------------------	-------------------------------

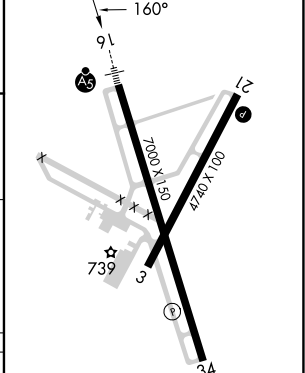


SC-3, 28 NOV 2024 to 26 DEC 2024

SC-3, 28 NOV 2024 to 26 DEC 2024



ELEV 682	D TDZE 682
----------	-------------------



CATEGORY	A	B	C	D
S-ILS 16		882-1/2	200 (200-1/2)	
S-LOC 16		980-1/2	298 (300-1/2)	
C CIRCLING	1120-1 438 (500-1)	1180-1 498 (500-1)	1280-1 1/2 598 (600-1 1/2)	1420-2 1/4 738 (800-2 1/4)

MIRL Rwy 3-21	MIRL Rwy 16-34
FAF to MAP 3 NM	
Knots	60 90 120 150 180
Min:Sec	3:00 2:00 1:30 1:12 1:00