

WAAS CH <b>78101</b> <b>W16A</b>	APP CRS <b>160°</b>	Rwy Idg TDZE Apt Elev	<b>7000</b> <b>682</b> <b>682</b>
--	------------------------	-----------------------------	---

**RNAV (GPS) RWY 16**  
DRAUGHON-MILLER CENTRAL TEXAS RGNL (TPL)

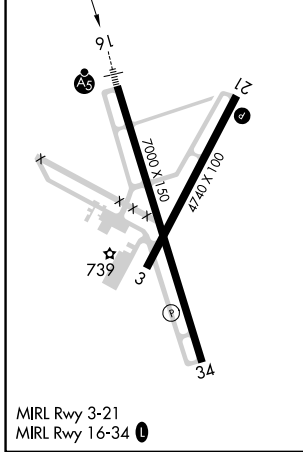
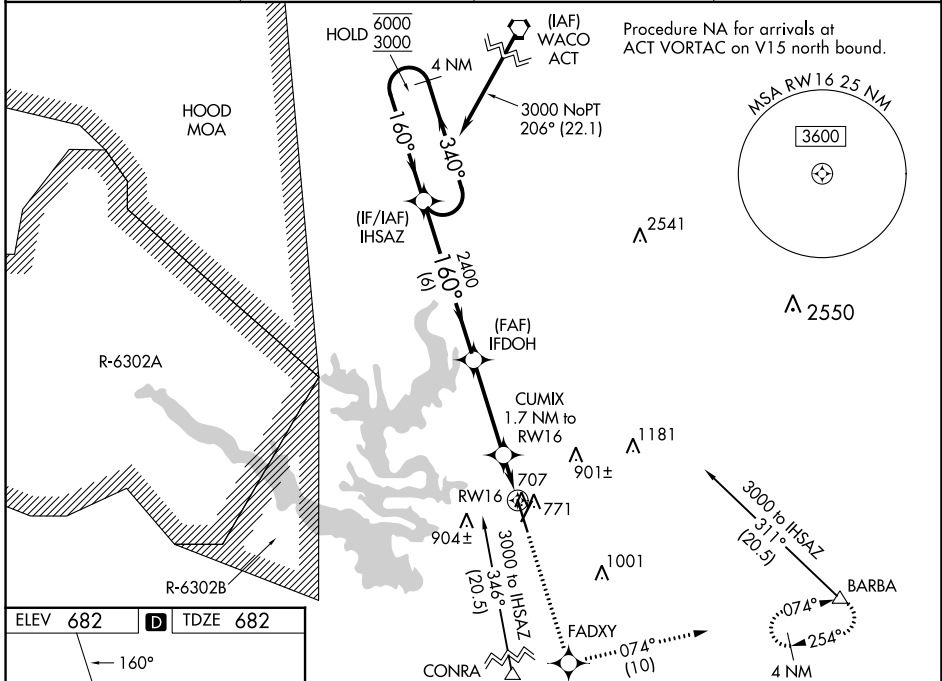
RNP APCH - GPS.

**⚠** For uncompensated Baro-VNAV systems, LNAV/VNAV NA below -16°C or above 54°C. For inop ALS, increase LNAV/VNAV all Cats visibility to ¾ SM and LNAV Cats C/D visibility to ⅞ SM.

MALSR

MISSED APPROACH: Climb to 3600 direct FADXY and on track 074° to BARBA and hold, continue climb-in-hold to 3600.

AWOS-3PT <b>134.975</b>	GRAY APP CON <b>120.075 370.0</b>	CLNC DEL <b>125.9</b>	UNICOM <b>123.0</b> (CTAF)
----------------------------	--------------------------------------	--------------------------	-------------------------------



4 NM Holding Pattern	IHSAZ	IFDOH	3600	FADXY	tr 074°	BARBA
6000 ← 340°	3000 → 160°	2400	↑		△	
GP 3.00°	2400	CUMIX 1.7 NM to RW16				
TCH 45	1260	0.7 NM to RW16				
	6 NM	3.6 NM	1 NM	0.7		
CATEGORY	A	B	C	D		
LPV DA		882-½	200 (200-½)			
LNAV/VNAV DA		932-½	250 (300-½)			
LNAV MDA		960-½	278 (300-½)			
CIRCLING	1140-1 458 (500-1)	1200-1 518 (600-1)	1280-1½ 598 (600-1½)	1420-2¼ 738 (800-2¼)		

SC-3, 28 NOV 2024 to 26 DEC 2024

SC-3, 28 NOV 2024 to 26 DEC 2024