


APP CRS	Rwy Idg	9400
178°	TDZE	35
	Apt Elev	36

RNAV (RNP) Z RWY 18R

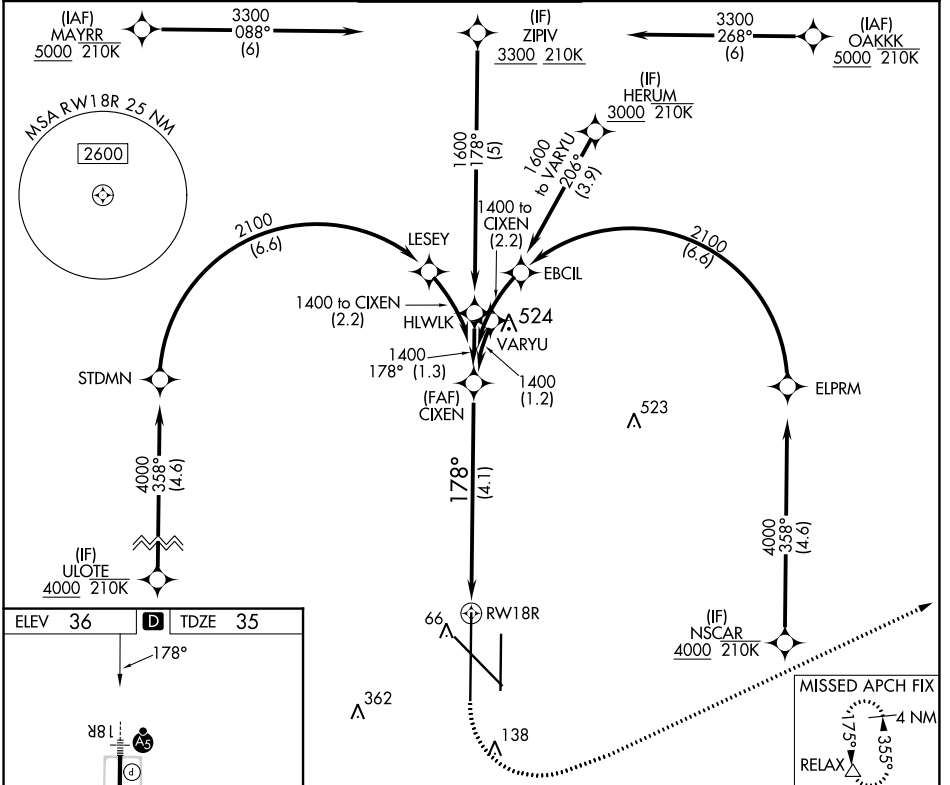
VALLEY INTL (H.R.L.)

RNP AR APCH - GPS.

▼ For uncompensated Baro-VNAV systems, procedure NA below -1°C or above 54°C. When local altimeter setting not received, procedure NA. For inop ALS, increase RNP 0.11 all Cats visibility to RVR 4000 and RNP 0.30 all Cats visibility to RVR 4500.

MALSR  MISSED APPROACH: Climb to 500 then climbing left turn to 2000 direct RELAX and hold.

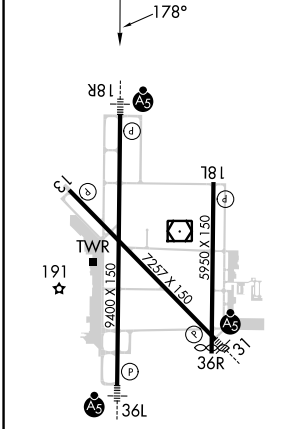
ATIS 124.85	VALLEY APP CON 120.7 279.5	HARLINGEN TOWER* 119.3(CTAF) 0 317.6	GND CON 121.7	UNICOM 122.95
-----------------------	--------------------------------------	--	-------------------------	-------------------------



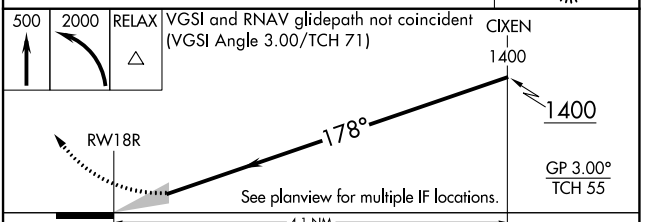
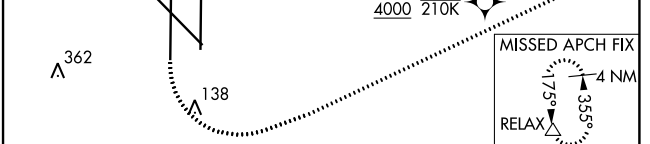
SC-3, 28 NOV 2024 to 26 DEC 2024

SC-3, 28 NOV 2024 to 26 DEC 2024

ELEV 36	D	TDZE 35
---------	----------	---------



MIRL Rwy 18L-36R
REIL Rwy 13 and 18L
HIRL Rwy 13-31 and 18R-36L



CATEGORY	A	B	C	D
RNP 0.11 DA		285/24	250 (300-1/2)	
RNP 0.30 DA		345/24	310 (400-1/2)	

AUTHORIZATION REQUIRED