

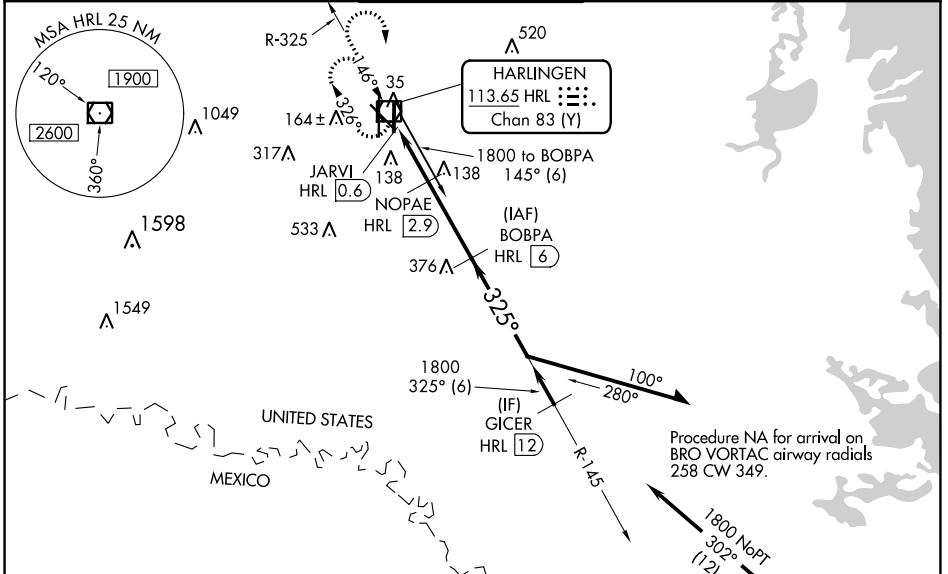
VOR/DME HRL 113.65 Chan 83 (Y)	APP CRS 325°	Rwy Idg TDZE Apt Elev	7257 36 36
--	------------------------	-----------------------------	---------------------------------------

VOR Z RWY 31

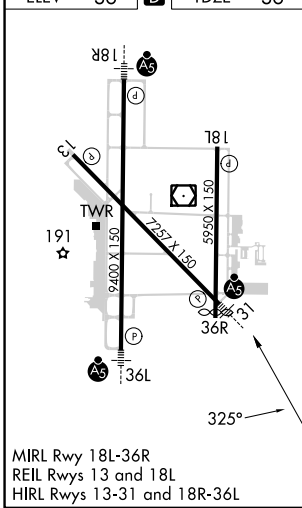
VALLEY INTL (HRL)

DME required.	MALSRL	MISSED APPROACH: Climb to 1000 then climbing right turn to 2100 direct HRL VOR/DME and hold, continue climb and hold to 2100.
<p>▼ VDP NA when using Port Isabel altimeter setting. When local altimeter setting not received, use Port Isabel altimeter setting and increase all MDAs 60 feet and S-31 visibility Cat C/D ¼ SM, and Circling visibility Cat C/D ¼ SM. For inop ALS, increase S-31 Cats C/D visibilities to 1½ SM.</p>		

ATIS 124.85	VALLEY APP CON 120.7 279.5	HARLINGEN TOWER ★ 119.3 (CTAF) 317.6	GND CON 121.7	UNICOM 122.95
-----------------------	--------------------------------------	--	-------------------------	-------------------------



ELEV 36	D	TDZE 36
---------	---	---------



HARLINGEN, TEXAS
Amdt 2 11JUL24

1000	2100	HRL	BOBPA HRL 6	Remain within 10 NM
JARVI HRL 0.6		NOPAE HRL 2.9	1800	145°
HRL 1.7		800	325°	1800
1 NM		1.2 NM	3.1 NM	
CATEGORY	A	B	C	D
S-31	420-½ 384 (400-½)		420-¾ 384 (400-¾)	
CIRCLING	460-1 424 (500-1)	560-1 524 (600-1)	600-1½ 564 (600-1½)	680-2 644 (700-2)

26°14'N-97°39'W

VOR Z RWY 31

VALLEY INTL (HRL)

SC-3, 28 NOV 2024 to 26 DEC 2024

SC-3, 28 NOV 2024 to 26 DEC 2024