

WAAS CH 69635 W31A	APP CRS 308°	Rwy Idg TDZE Apt Elev	6002 3649 3661
--	------------------------	-----------------------------	---

RNAV (GPS) RWY 31

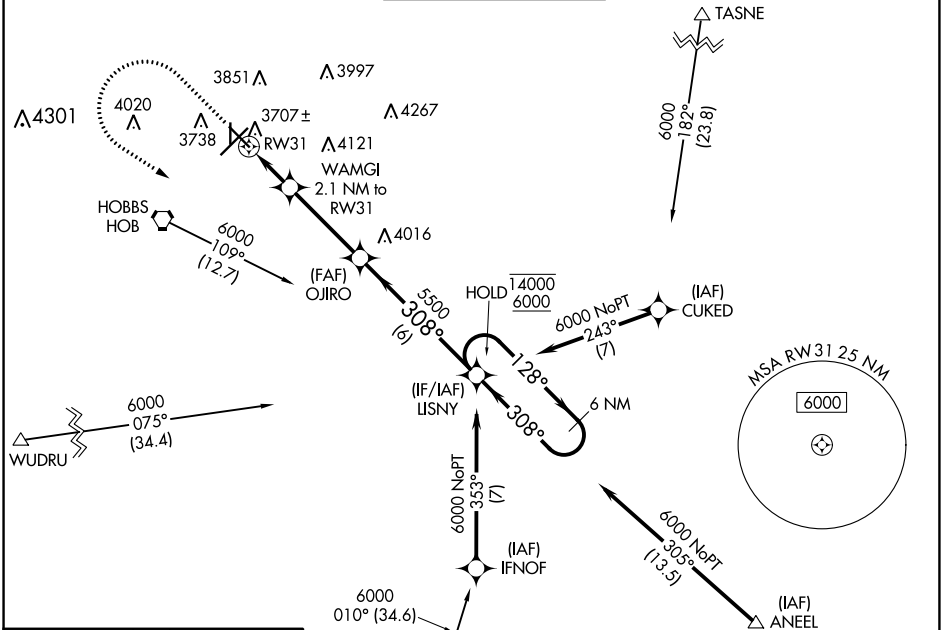
LEA COUNTY RGNL (HOB)

RNP APCH - GPS.

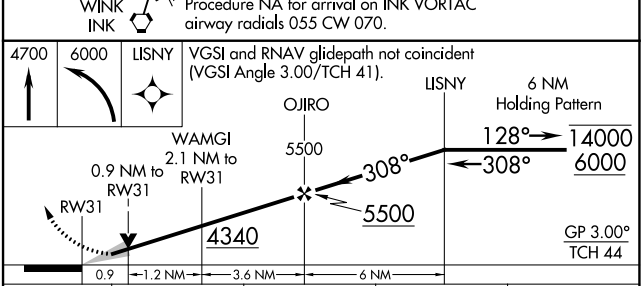
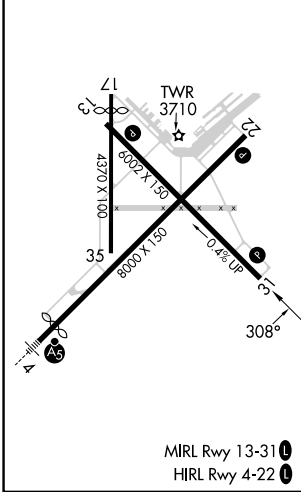
⚠ Circling Rwy 17, 35 NA at night. For uncompensated Baro-VNAV systems, LNAV/VNAV NA below -1°C or above 54°C.

MISSED APPROACH: Climb to 4700 then climbing left turn to 6000 direct LISNY and hold.

ATIS 119.75	FORT WORTH CENTER 133.1 298.95	HOBBS TOWER ★ 120.65 (CTAF) 317.4	GND CON 121.9	UNICOM 122.95
-----------------------	--	---	-------------------------	-------------------------



ELEV 3661	D	TDZE 3649
-----------	----------	-----------



	A	B	C	D
LPV DA		3899-¾	250 (300-¾)	
LNAV/VNAV DA		3899-¾	250 (300-¾)	
LNAV MDA		3960-1	311 (300-1)	
CIRCLING	4120-1 459 (500-1)	4160-1 499 (500-1)	4440-2¼ 779 (800-2¼)	4440-2½ 779 (800-2½)

SW-1, 28 NOV 2024 to 26 DEC 2024

SW-1, 28 NOV 2024 to 26 DEC 2024