

LOM TU 420	APP CRS 001°	Rwy Idg 7150
		TDZE 347
		Apt Elev 347

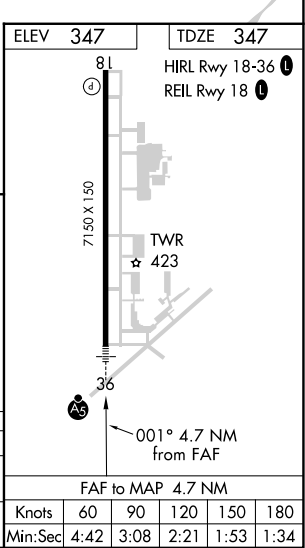
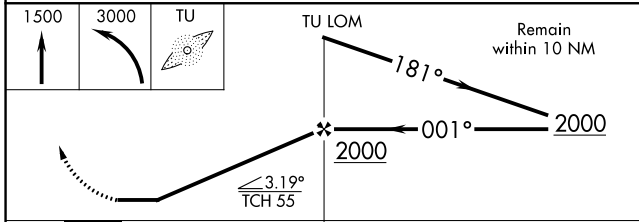
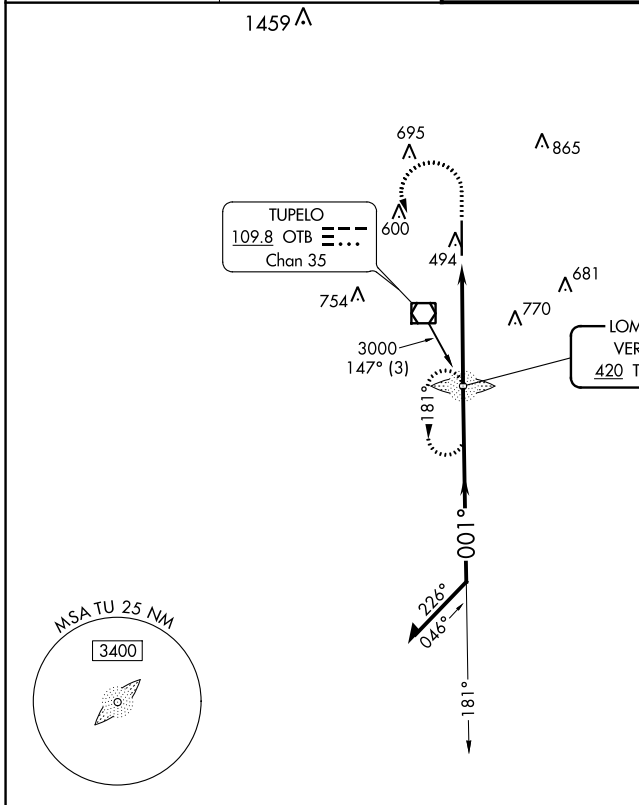
NDB RWY 36

TUPELO RGNL (TUP)

When local altimeter setting not received, use Columbus AFB altimeter setting and increase all MDA 120 feet, increase S-36 Cats C and D visibility 3/8 SM and Circling Cats C and D 1/2 SM. For inop ALS, increase S-36 Cat A and B visibility to 1 SM and Cat C and D to 1 3/8 SM. For inop ALS when using Columbus AFB altimeter setting, increase S-36 Cat A and B visibility to 1 SM and Cat C and D to 1 3/4 SM.

MALS R
 MISSED APPROACH:
 Climb to 1500 then climbing left turn to 3000 direct TU LOM and hold.

ASOS 133.525	MEMPHIS CENTER 128.5 279.55	TUPELO TOWER ★ 118.775 (CTAF) 254.275	GND CON 121.825 254.275
------------------------	---------------------------------------	---	-----------------------------------



CATEGORY	A	B	C	D
S-36	840-3/4 493 (500-3/4)		840-1 493 (500-1)	
CIRCLING	840-1 493 (500-1)		900-1 1/2 553 (600-1 1/2)	1140-2 1/2 793 (800-2 1/2)

FAF to MAP 4.7 NM					
Knots	60	90	120	150	180
Min:Sec	4:42	3:08	2:21	1:53	1:34

SC-4, 28 NOV 2024 to 26 DEC 2024

SC-4, 28 NOV 2024 to 26 DEC 2024