

VOR/DME OTB 109.8 Chan 35	APP CRS 196°	Rwy Idg 7150 TDZE 344 Apt Elev 347
-----------------------------------------------	------------------------	---------------------------------------------------------------

VOR RWY 18

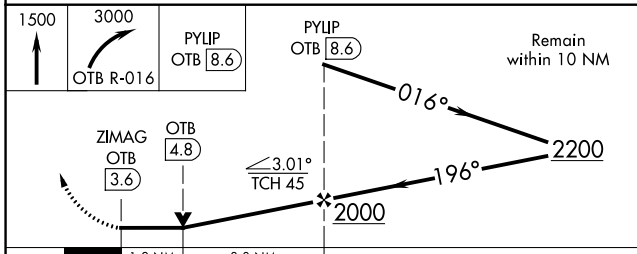
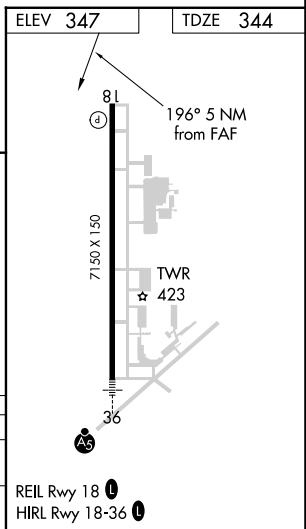
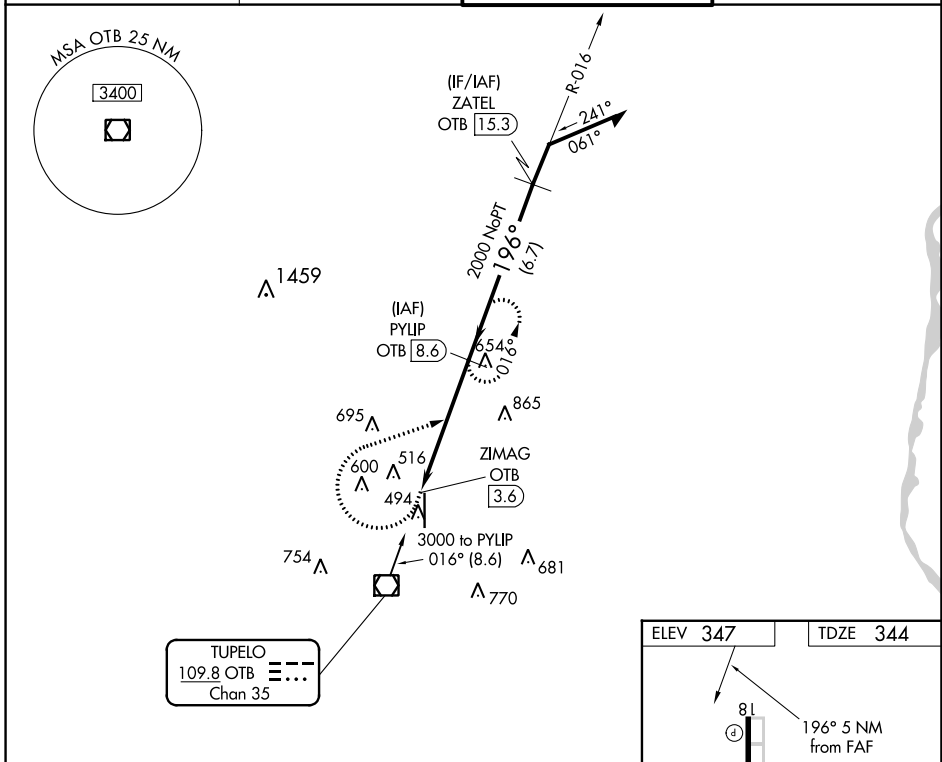
TUPELO RGNL (TUP)

RADAR required for procedure entry. DME required.

⚠ When local altimeter setting not received, use Columbus AFB altimeter setting and increase all MDA 120 feet. Increase S-18 Cat C/D visibility $\frac{3}{8}$ SM; increase Circling Cat C/D visibility $\frac{1}{2}$ SM. VDP NA when using Columbus AFB altimeter setting.

MISSED APPROACH: Climb to 1500 then climbing right turn to 3000 on OTB VOR/DME R-016 to PYLIP/OTB 8.6 DME and hold.

ASOS 133.525	MEMPHIS CENTER 128.5 279.55	TUPELO TOWER ★ 118.775 (CTAF) 0 254.275	GND CON 121.825 254.275
------------------------	---------------------------------------	---------------------------------------------------	-----------------------------------



CATEGORY	A	B	C	D
S-18	780-1	436 (500-1)	780-1 $\frac{1}{4}$	436 (500-1 $\frac{1}{4}$)
C CIRCLING	820-1	473 (500-1)	900-1 $\frac{1}{2}$ 553 (600-1 $\frac{1}{2}$)	1140-2 $\frac{1}{2}$ 793 (800-2 $\frac{1}{2}$)

SC-4, 28 NOV 2024 to 26 DEC 2024

SC-4, 28 NOV 2024 to 26 DEC 2024