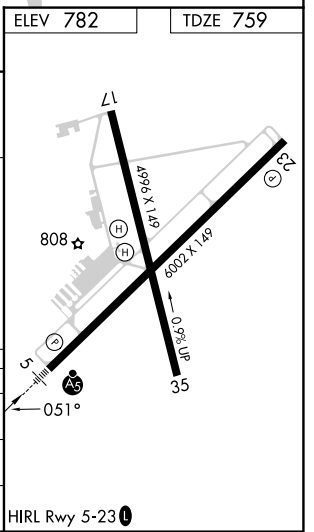
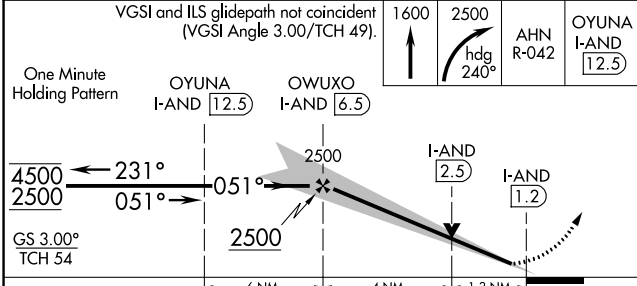
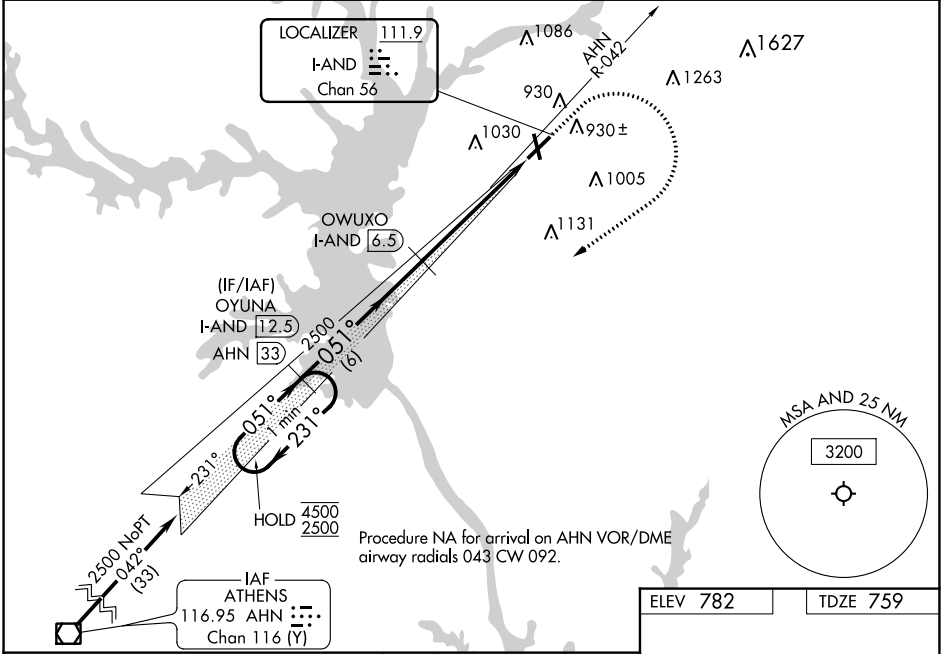


LOC/DME I-AND 111.9 Chan 56	APP CRS 051°	Rwy Idg 6002 TDZE 759 Apt Elev 782
---	------------------------	---

ILS or LOC RWY 5

ANDERSON RGNL (A·ND)

DME required.		MALSR 	MISSED APPROACH: Climb to 1600 then climbing right turn to 2500 on heading 240° and on AHN VOR/DME R-042 to OYUNA/I-AND 12.5 DME and hold.
⚠ When local altimeter setting not received, use Clemson altimeter setting and increase S-ILS 05 DA to 1006 feet; increase all MDAs 60 feet and Circling visibility Cat C/D ¼ SM. VDP NA when using Clemson altimeter setting. Circling Rwy 17, 35 NA at night. For inop ALS increase S-LOC 05 visibility Cat C/D to 1⅓ SM.	ASOS 120.675		



CATEGORY	A	B	C	D
S-ILS 5	959-½ 200 (200-½)			
S-LOC 5	1220-½	461 (500-½)	1220-1	461 (500-1)
CIRCLING	1260-1 478 (500-1)	1320-1 538 (600-1)	1440-1¾ 658 (700-1¾)	1500-2¼ 718 (800-2¼)

SE-2, 28 NOV 2024 to 26 DEC 2024

SE-2, 28 NOV 2024 to 26 DEC 2024