

VORTAC ELW 108.6 Chan 23	APP CRS 039°	Rwy Idg 6002 TDZE 759 Apt Elev 782
---------------------------------------	------------------------	---

VOR RWY 5

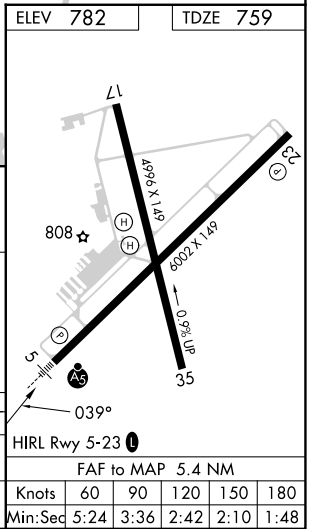
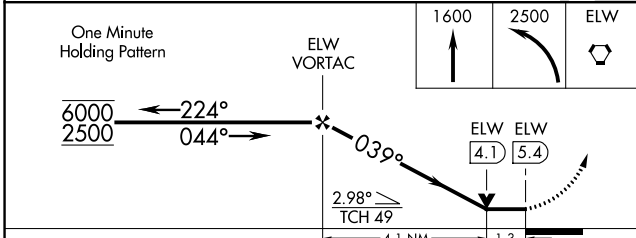
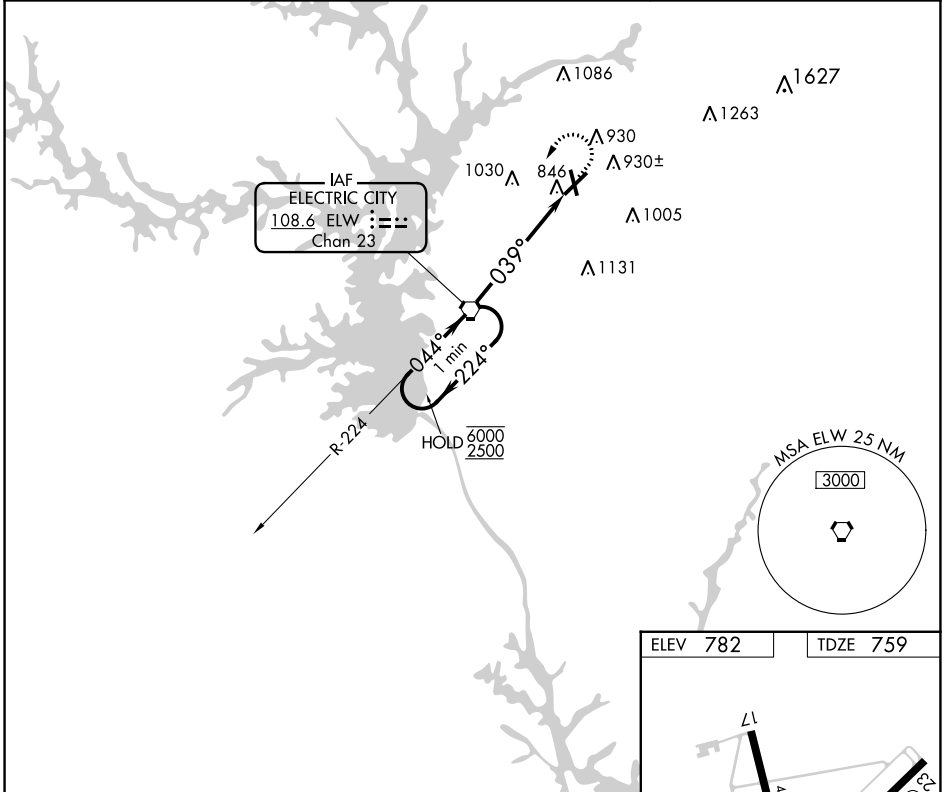
ANDERSON RGNL (A.ND)

⚠ Rwy 17, 35 helicopter visibility reduction below 1 SM NA. When local altimeter setting not received, use CEU altimeter setting and increase all MDAs 60 feet and S-5 visibility Cat C/D 1/8 SM, and Circling visibility Cat C/D 1/4 SM. VDP NA when using CEU altimeter setting. Circling Rwy 17, 35 NA at night.

MALSR

MISSED APPROACH: Climb to 1600 then climbing left turn to 2500 direct ELW VORTAC and hold.

ASOS 120.675	GREER APP CON ★ 118.8 270.275	CTAF 123.6 0
------------------------	---	------------------------



SE-2, 28 NOV 2024 to 26 DEC 2024

SE-2, 28 NOV 2024 to 26 DEC 2024