

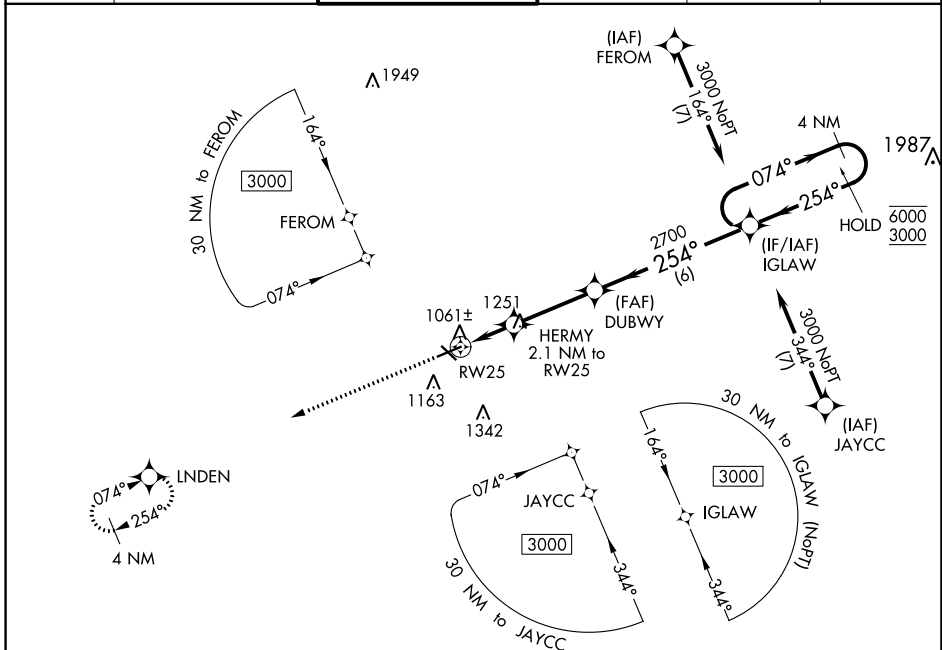
WAAS CH 86341 RW25A	APP CRS 254°	Rwy Idg TDZE Apt Elev	5351 996 1001
----------------------------------	------------------------	-----------------------------	--

RNAV (GPS) RWY 25

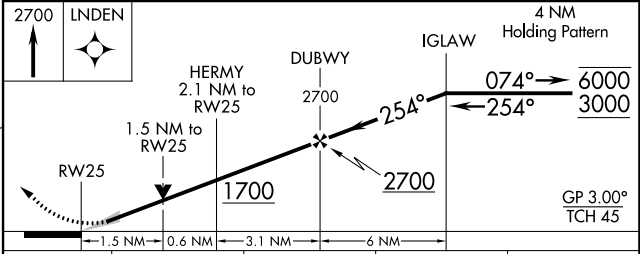
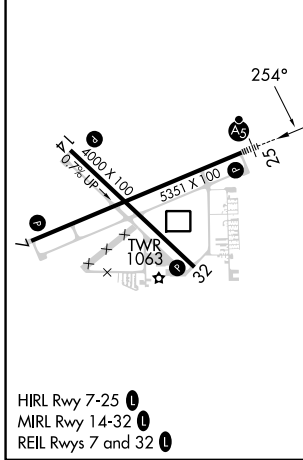
JACKSON COUNTY/REYNOLDS FLD (JXN)

RNP APCH - GPS.		MALSR	MISSED APPROACH: Climb to 2700 direct LNDEN and hold.		
<p>▼ For uncompensated Baro-VNAV systems, LNAV/VNAV NA below -21°C or above 54°C. For inop ALS, increase LNAV/VNAV all Cats visibility to 7/5 SM.</p>					

ATIS 125.725	GREAT LAKES APP CON * 127.3 335.575	JACKSON TOWER * 128.475 (CTAF) 257.8	GND CON 121.9	CLNC DEL 121.9	UNICOM 122.95
------------------------	---	--	-------------------------	--------------------------	-------------------------



ELEV 1001	TDZE 996
-----------	----------



CATEGORY	A	B	C	D
LPV DA		1196-1/2	200 (200-1/2)	
LNAV/VNAV DA		1279-1/2	283 (300-1/2)	
LNAV MDA	1520-1/2	524 (600-1/2)	1520-1	524 (600-1)
<input checked="" type="checkbox"/> CIRCLING	1520-1	519 (600-1)	1660-1 3/4 659 (700-1 3/4)	1660-2 659 (700-2)

EC-1, 28 NOV 2024 to 26 DEC 2024

EC-1, 28 NOV 2024 to 26 DEC 2024