

LOC I- UIN 110.1	APP CRS 038°	Rwy Idg 7098
		TDZE 760
		Apt Elev 769

ILS or LOC RWY 4

QUINCY RGNL-BALDWIN FLD (UIN)

ADF or DME required.
RADAR required for procedure entry at RAYOK.

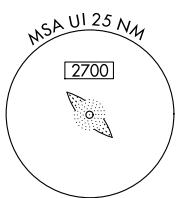
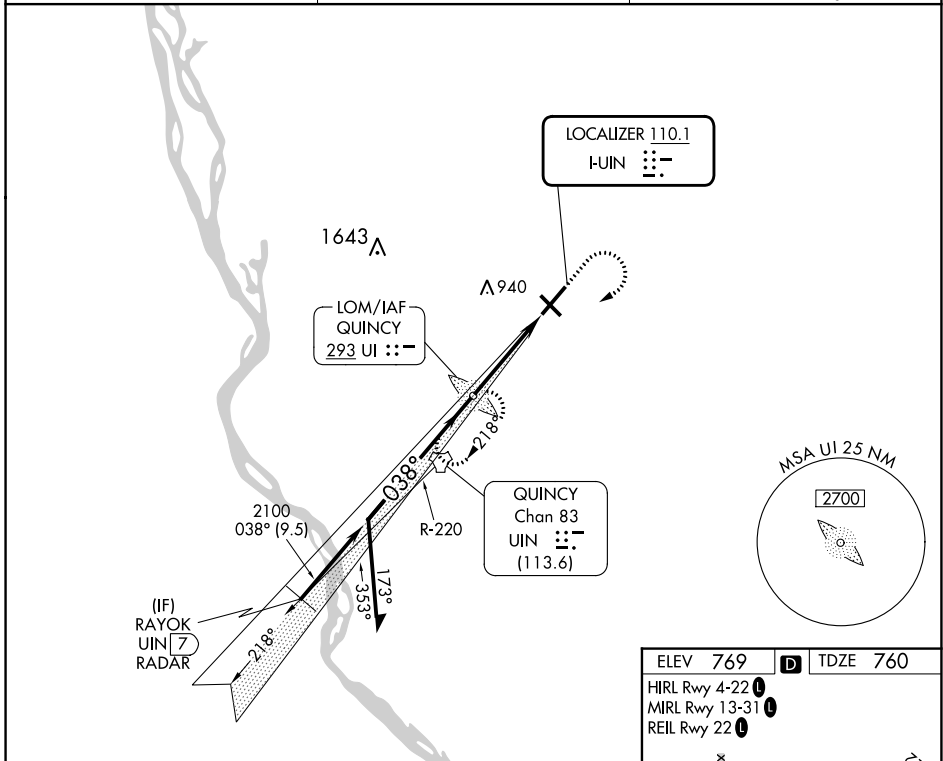
▽ For inop ALS, increase S-ILS 4 all Cats visibility to ¾ SM and S-LOC 4 Cat C and D visibility to 1 SM.

△ NA



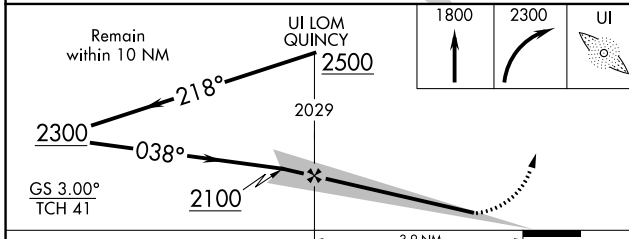
MISSED APPROACH: Climb to 1800 then climbing right turn to 2300 direct QUINCY LOM and hold.

ASOS 121.425	KANSAS CITY CENTER 126.225 317.775	UNICOM 123.0 (CTAF) 0
------------------------	--	---------------------------------

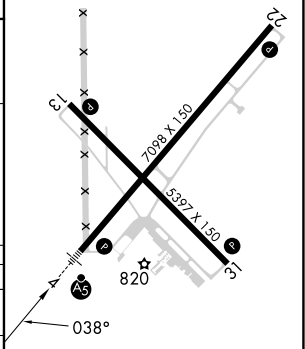


EC-3, 28 NOV 2024 to 26 DEC 2024

EC-3, 28 NOV 2024 to 26 DEC 2024



ELEV 769	TDZE 760
HIRL Rwy 4-22	
MIRL Rwy 13-31	
REIL Rwy 22	



CATEGORY	A	B	C	D
S-ILS 4	960-½ 200 (200-½)			
S-LOC 4	1140-½	380 (400-½)	1140-⅝	380 (400-⅝)
C CIRCLING	1180-1 411 (500-1)	1220-1 451 (500-1)	1240-1½ 471 (500-1½)	1320-2 551 (600-2)

FAF to MAP 3.9 NM					
Knots	60	90	120	150	180
Min:Sec	3:54	2:36	1:57	1:34	1:18