


| | | |
|---|------------------------|---|
| LOC/DME I-FRT 109.5 Chan 32 | APP CRS 216° | Rwy Idg 7659 TDZE 38 Apt Elev 42 |
|---|------------------------|---|

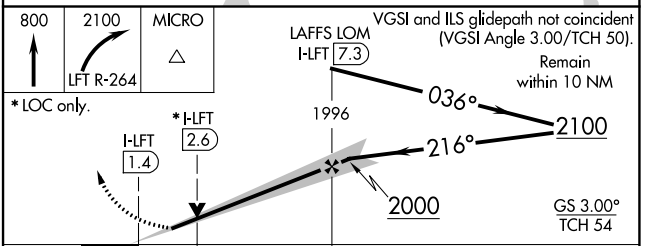
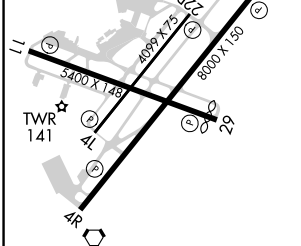
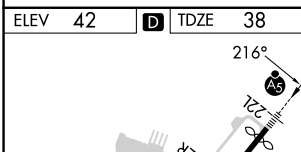
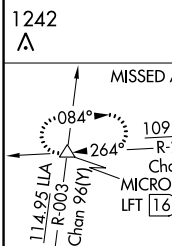
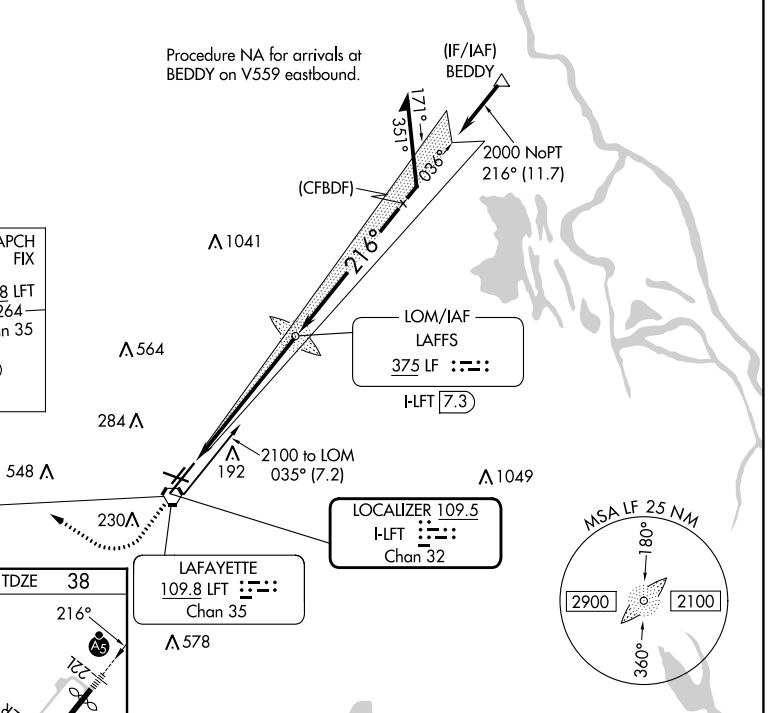
ILS or LOC RWY 22L

LAFAYETTE RGNL/PAUL FOURNET FLD (L.F.T)

⚠ VDP NA with Acadiana Rgnl altimeter setting. When local altimeter setting not received, use Acadiana Rgnl altimeter setting and increase DA to 267 feet; increase all MDA 40 feet and S-LOC 22L visibility Cat C/D to RVR 5000 and Circling visibility Cat C/D ¼ SM. For inop MALSR when using Acadiana Rgnl altimeter setting, increase S-LOC 22L Cat C and D visibility to 1 ½ mile.
****RVR 1800 authorized with use of FD or AP or HUD to DA (NA when using Acadiana Rgnl altimeter setting).**

MALSR

MISSED APPROACH:
 Climb to 800 then climbing right turn to 2100 on LFT VORTAC R-264 to MICRO INT/ LFT 16 DME and hold.

| | | | | | |
|-----------------------|---|--|-------------------------|---------------------------|-------------------------|
| ATIS 134.05 | LAFAYETTE APP CON * 121.1 363.0 | LAFAYETTE TOWER * 118.5 (CTAF) 0 257.8 | GND CON 121.8 | CLNC DEL 125.55 | UNICOM 122.95 |
|-----------------------|---|--|-------------------------|---------------------------|-------------------------|



| CATEGORY | A | B | C | D |
|-------------------|----------------------|----------------------|------------------------|----------------------|
| S-ILS 22L** | 480/24 | 238/24 | 200 (200-½) | 442 (500-¾) |
| S-LOC 22L | 480/24 | 442 (500-½) | 480/45 | 442 (500-¾) |
| C CIRCLING | 540-1 498 (500-1) | 580-1 538 (600-1) | 700-1¾ 658 (700-1¾) | 700-2 658 (700-2) |

SC-4, 28 NOV 2024 to 26 DEC 2024

SC-4, 28 NOV 2024 to 26 DEC 2024