

| | | |
|--|------------------------|---|
| VOR/DME BVO 117.9 Chan 126 | APP CRS 348° | Rwy Idg 6201 TDZE 712 Apt Elev 717 |
|--|------------------------|---|

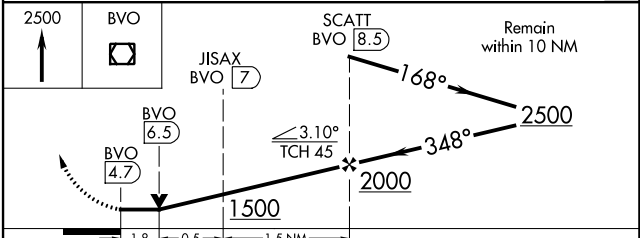
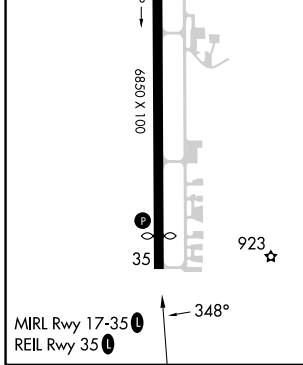
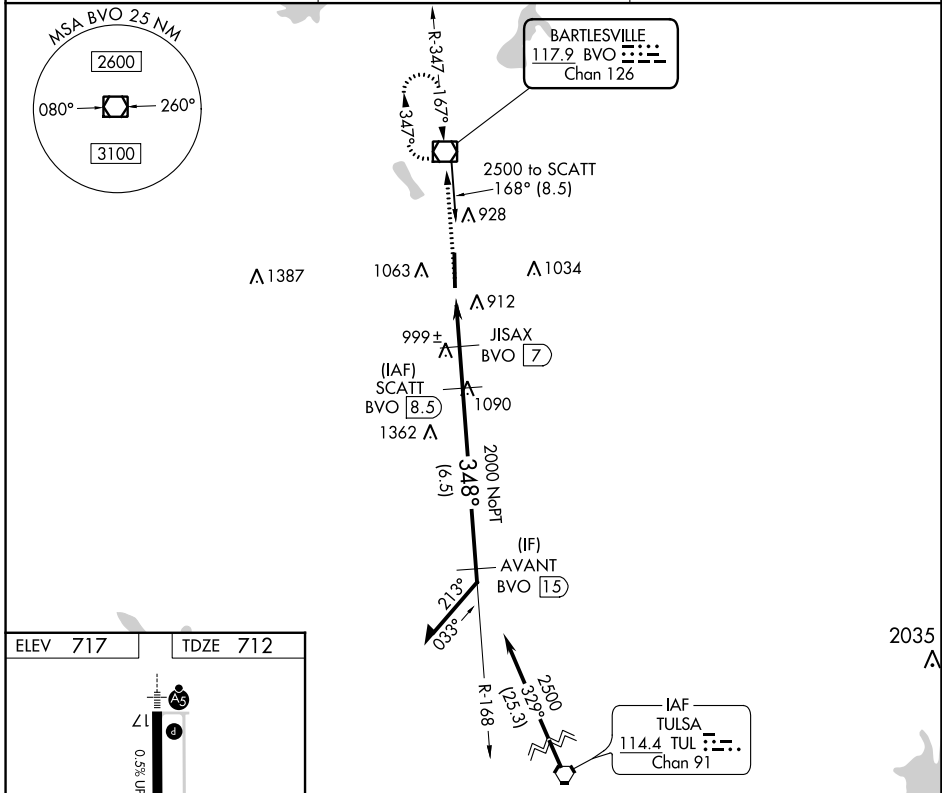
VOR/DME RWY 35

BARTLESVILLE MUNI (BVO)

⚠ Circling NA east of Rwy 17-35. When local altimeter setting not received, use Tulsa Intl altimeter setting and increase all MDAs 100 feet and S-35 and Circling Cat C visibility $\frac{1}{4}$ SM. VDP NA when using Tulsa Intl altimeter setting.

MISSED APPROACH: Climb to 2500 direct BVO VOR/DME and hold.

| | | |
|------------------------|--|--------------------------|
| ASOS 132.675 | KANSAS CITY CENTER 128.6 282.325 | CTAF 122.825 0 |
|------------------------|--|--------------------------|



| CATEGORY | A | B | C | D |
|-------------------|--------|-------------|--|----|
| S-35 | 1320-1 | 608 (700-1) | 1320-1 $\frac{3}{4}$ 608 (700-1 $\frac{3}{4}$) | NA |
| C CIRCLING | 1400-1 | 683 (700-1) | 1400-2 683 (700-2) | NA |

SC-1, 28 NOV 2024 to 26 DEC 2024

SC-1, 28 NOV 2024 to 26 DEC 2024

2035 Δ