

LOC I-EEEN <b>108.9</b>	APP CRS <b>018°</b>	Rwy Idg <b>6201</b>
		TDZE <b>488</b>
		Apt Elev <b>488</b>

# ILS or LOC RWY 2

DILLANT/HOPKINS (EEN)

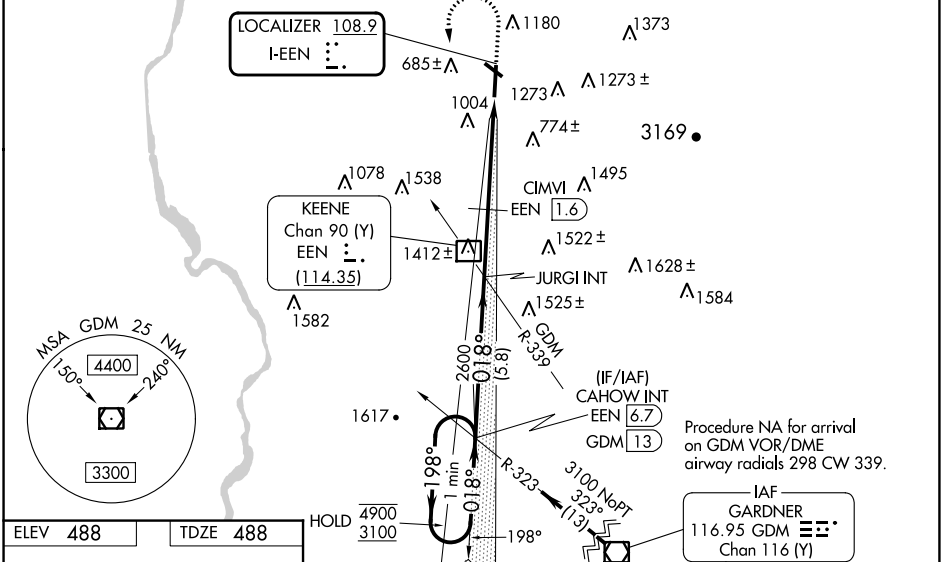
DME required for LOC only.

**⚠** Circling Rwy 32 NA at night. Rwy 2 helicopter visibility reduction below 3/4 SM NA. Inop table does not apply to S-ILS 2 all Cats, S-LOC 2 Cats C/D and CIMVI fix minimums S-LOC 2 Cat A. For inop ALS, increase S-LOC 2 Cat A visibility to 1 1/4 SM and increase CIMVI fix minimums S-LOC 2 Cat B visibility to 1 1/4 SM and Cat C/D visibility to 2 1/2 SM. When local altimeter setting not received, use ORE altimeter setting and increase S-ILS 2 DA to 914; increase all MDAs 60 feet and increase CIMVI fix minimums S-LOC 2 Cats C and D visibility 1/8 SM. Inop table does not apply to S-LOC 2 Cats C/D when using ORE altimeter setting. For inop ALS when using ORE altimeter setting, increase S-LOC 2 Cat A visibility to 1 1/4 SM and increase CIMVI fix minimums S-LOC 2 Cats A/B visibility to 1 1/4 SM. VDP NA when using ORE altimeter setting. DME from EEN DME. DME use requires simultaneous reception of I-EEEN and EEN DME.

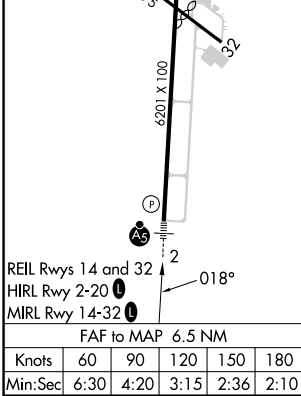
**MALSRR**  
AS

**MISSED APPROACH:**  
Climb to 1540 then climbing left turn to 3100 on heading 200° and GDM VOR/DME R-323 to CAHOW INT/GDM VOR/DME 13 DME and hold.

AWOS-3PT <b>119.025</b>	BOSTON CENTER <b>123.75 338.2</b>	UNICOM <b>123.0 (CTAF)</b>
----------------------------	--------------------------------------	-------------------------------



ELEV <b>488</b>	TDZE <b>488</b>
-----------------	-----------------



One Minute Holding Pattern	CAHOW INT EEN (6.7)	JURGI INT	EEN DME	CIMVI EEN (1.6)	EEN (3.2)	EEN (5.7)
4900 ← 198°	3100 ← 018°	2600 → 018°	2600	1840		
GS 3.00° TCH 43	VGS1 and ILS glidepath not coincident (VGS1 Angle 3.00/TCH 39)					
			5.8 NM	2.4 NM	1.6	2.5

CATEGORY	A	B	C	D
S-ILS 02	860-1 372 (400-1)			
S-LOC 02	1840-1	1352 (1400-1)	1840-3	1352 (1400-3)
<b>C</b> CIRCLING	1840-1 1/4 1352 (1400-1 1/4)	1840-1 1/2 1352 (1400-1 1/2)	1840-3 1352 (1400-3)	1980-3 1492 (1500-3)
CIMVI FIX MINIMUMS (DME REQUIRED)				
S-LOC 02	1320-1	832 (900-1)	1320-1 7/8	832 (900-1 7/8)
<b>C</b> CIRCLING	1420-1 1/4 932 (1000-1 1/4)	1480-1 1/2 992 (1000-1 1/2)	1760-3 1272 (1300-3)	1980-3 1492 (1500-3)

NE-1, 28 NOV 2024 to 26 DEC 2024

NE-1, 28 NOV 2024 to 26 DEC 2024