

LOC I- <b>LFK</b> <b>111.3</b>	APP CRS <b>073°</b>	Rwy Idg TDZE Apt Elev	<b>5400</b> <b>287</b> <b>296</b>
-----------------------------------	------------------------	-----------------------------	---

# ILS or LOC RWY 7

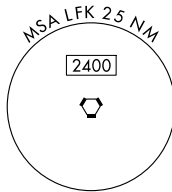
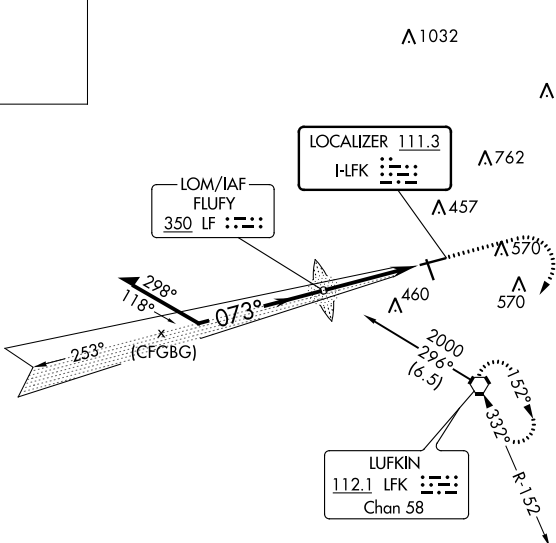
ANGELINA COUNTY (L<sup>FLK</sup>)

NA Circling Rwy 16, 25 NA at night.	MALSR AS	MISSED APPROACH: Climb to 800 then climbing right turn to 2000 direct LFK VORTAC and hold, continue climb-in-hold.
--	-------------	--

ASOS <b>120.625</b>	HOUSTON CENTER <b>125.175 285.575</b>	UNICOM <b>123.0</b> (CTAF)
------------------------	--	-------------------------------

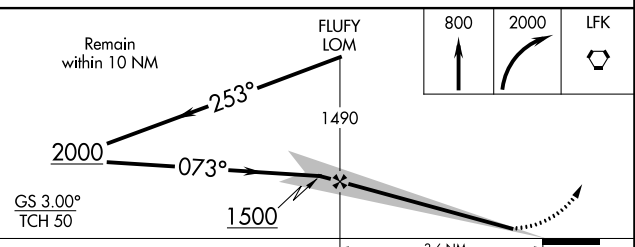
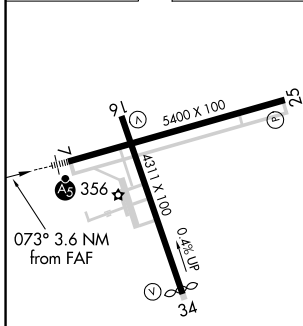
ALTERNATE MISSED APCH

FLUFY  
350 LF : : : :



Procedure NA for arrival on LFK VORTAC airway radials 245 CW 354.

ELEV 296	TDZE 287
----------	----------



GS 3.00° TCH 50				
CATEGORY	A	B	C	D
S-ILS 7	537-1/2		250 (300-1/2)	
S-LOC 7	680-1/2	393 (400-1/2)	680-5/8	393 (400-5/8)
CIRCLING	740-1 444 (500-1)	760-1 464 (500-1)	880-1 1/2 584 (600-1 1/2)	1140-2 3/4 844 (900-2 3/4)

MIRL Rwy 7-25 and 16-34

FAF to MAP 3.6 NM

Knots	60	90	120	150	180
Min:Sec	3:36	2:24	1:48	1:26	1:12

SC-5, 28 NOV 2024 to 26 DEC 2024

SC-5, 28 NOV 2024 to 26 DEC 2024