

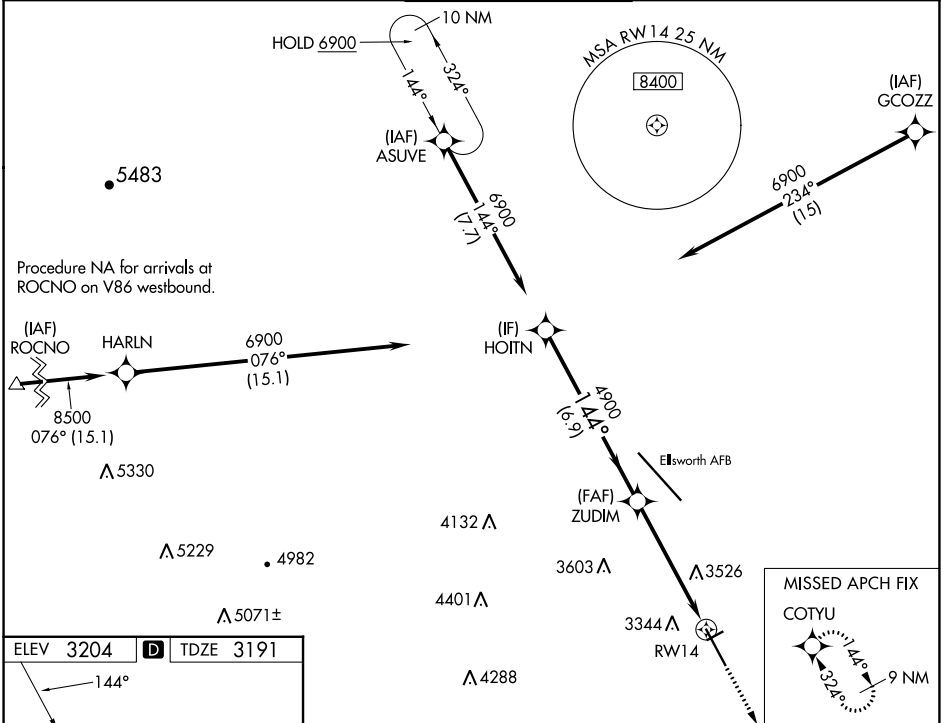
WAAS CH 60919 W14A	APP CRS 144°	Rwy Idg TDZE Apt Elev	8701 3191 3204
--	------------------------	-----------------------------	---

RNAV (GPS) RWY 14

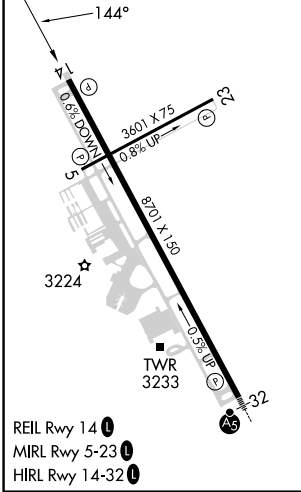
RAPID CITY RGNL (R.A.P)

RNP APCH - GPS.		MISSED APPROACH: Climb to 5500 direct COTUY and hold.		
<p>▼ Rwy 14 helicopter visibility reduction below 3/4 SM NA. For uncompensated Baro-VNAV systems, LNAV/VNAV NA below -24°C or above 52°C.</p>				

ASOS 118.525	ELLSWORTH APP CON * 119.5 259.1	RAPID CITY TOWER * 125.85 (CTAF) 257.8	GND CON 121.9	UNICOM 122.95
------------------------	---	--	-------------------------	-------------------------



ELEV 3204	D	TDZE 3191
-----------	----------	-----------



RAPID CITY, SOUTH DAKOTA
Amdt 3 03NOV22

HOITN 6900 GP 3.00° TCH 50	ZUDIM 4900 1.7 NM to RWY14	5500 COTUY	6.9 NM 3.5 NM 1.7 NM				
			RWY14				
CATEGORY	A	B	C	D	E		
LPV DA	3441-3/4 250 (300-3/4)						
LNAV/VNAV DA	3858-1 7/8 667 (700-1 7/8)						
LNAV MDA	3780-1 589 (600-1)		3780-1 3/4 589 (600-1 3/4)				
CIRCLING	3780-1 576 (600-1)	3840-1 636 (700-1)	3860-1 3/4 656 (700-1 3/4)	3940-2 1/4 736 (800-2 1/4)	3940-2 1/2 736 (800-2 1/2)		

44°03'N-103°03'W

RNAV (GPS) RWY 14

NC-1, 28 NOV 2024 to 26 DEC 2024