

VORTAC RAP 112.3 Chan 70	APP CRS 141°	Rwy ldg 8701 TDZE 3191 Apt Elev 3204
--	------------------------	---

VOR or TACAN RWY 14

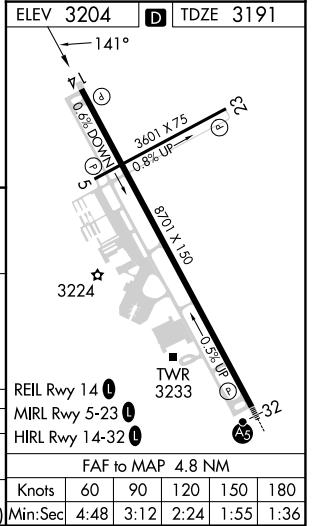
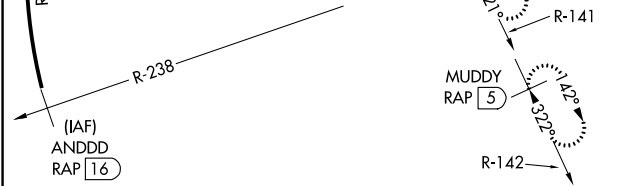
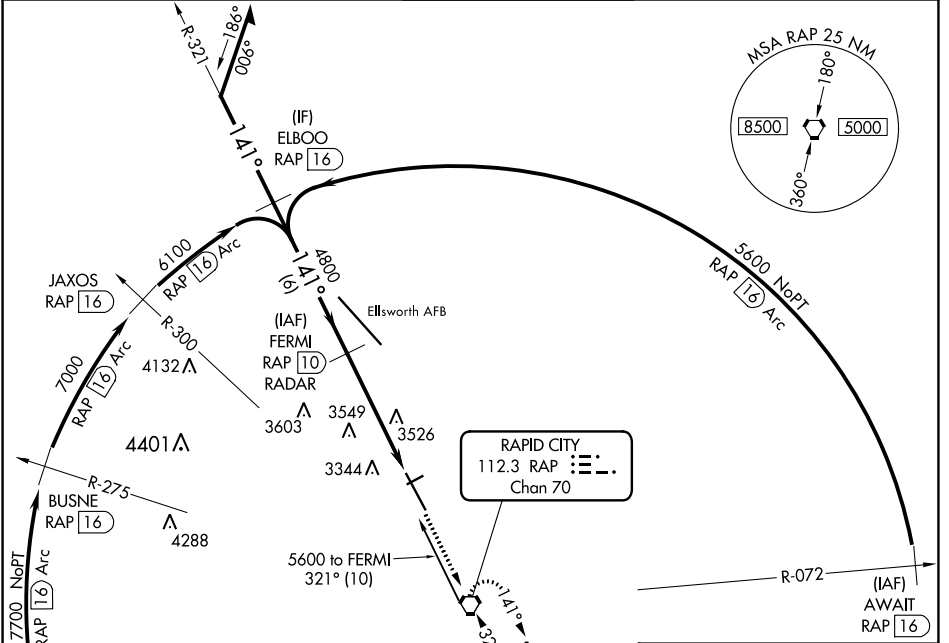
RAPID CITY RGNL (RAP)

DME or RADAR required.

▼ Rwy 14 helicopter visibility reduction below 3/4 SM NA.

MISSED APPROACH: Climb to 5600 direct RAP VORTAC and hold, continue climb-in-hold to 5600. (TACAN aircraft continue on RAP R-142 to MUDDY 5 DME and hold SE, RT, 322° inbound.)

ASOS 118.525	ELLSWORTH APP CON* 119.5 259.1	RAPID CITY TOWER* 125.85 (CTAF) 257.8	GND CON 121.9	UNICOM 122.95
------------------------	--	---	-------------------------	-------------------------



Remain within 15 NM	5600	321°	FERMI RAP 10 /RADAR	5600 RAP
	4800	141°		RAP 6.9
				RAP 5.2
				3 NM
				1.8 NM

CATEGORY	A	B	C	D	E
S-14	3800-1	609 (600-1)	3800-1 3/4	609 (600-1 3/4)	3800-2
CIRCLING	3800-1 596 (600-1)	3840-1 636 (700-1)	3860-1 3/4 656 (700-1 3/4)	3940-2 1/4 736 (800-2 1/4)	3960-2 3/4 756 (800-2 3/4)

REIL Rwy 14	MIRL Rwy 5-23	HIRL Rwy 14-32	FAF to MAP 4.8 NM		
Knots	60	90	120	150	180
Min:Sec	4:48	3:12	2:24	1:55	1:36

NC-1, 28 NOV 2024 to 26 DEC 2024

NC-1, 28 NOV 2024 to 26 DEC 2024