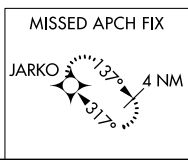
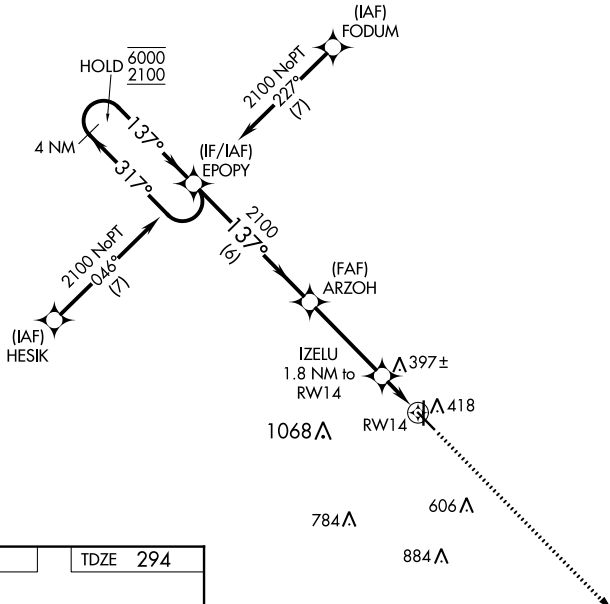
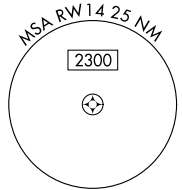


WAAS CH <b>61315</b> <b>W14A</b>	APP CRS <b>137°</b>	Rwy Idg TDZE Apt Elev	<b>5001</b> <b>294</b> <b>295</b>
--	------------------------	-----------------------------	---

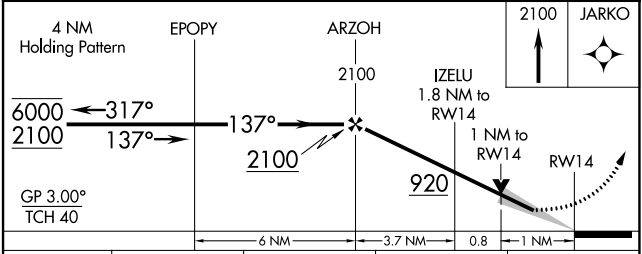
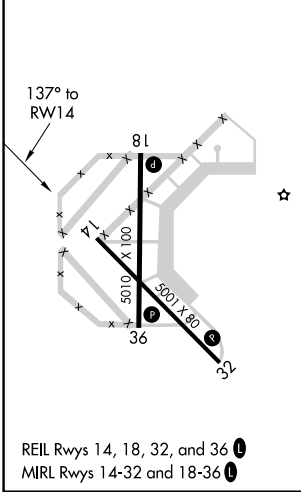
# RNAV (GPS) RWY 14

MALDEN RGNL (M.A.W)

RNP APCH-GPS.		MISSED APPROACH: Climb to 2100 direct JARKO and hold.	
<p>▼ For uncompensated Baro-VNAV systems, LNAV/VNAV                  ▲ NA below -15°C or above 54°C.</p>			
AWOS-3PT <b>119.825</b>	MEMPHIS CENTER <b>133.65 292.15</b>	GCO <b>135.075</b>	UNICOM <b>122.8 (CTAF) 0</b>



ELEV 295	TDZE 294
----------	----------



CATEGORY	A	B	C	D
LPV DA	494-1 200 (200-1)			NA
LNAV/VNAV DA	544-1 250 (300-1)			NA
LNAV MDA	660-1 366 (400-1)			NA
<b>C</b> CIRCLING	720-1 425 (500-1)	800-1 505 (600-1)	800-1½ 505 (600-1½)	NA

NC-3, 28 NOV 2024 to 26 DEC 2024

NC-3, 28 NOV 2024 to 26 DEC 2024