

VICKSBURG, MISSISSIPPI

AL-879 (FAA)

24025

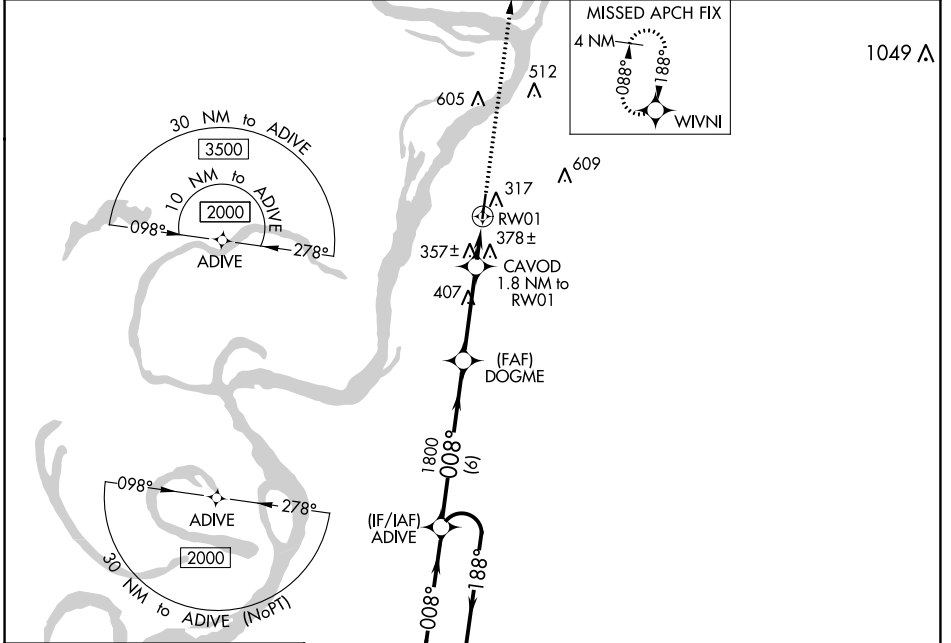
WAAS CH <b>66030</b> W01A	APP CRS <b>008°</b>	Rwy Idg TDZE <b>104</b> Apt Elev <b>107</b>	<b>4701</b>
---------------------------------	------------------------	---	-------------

# RNAV (GPS) RWY 1

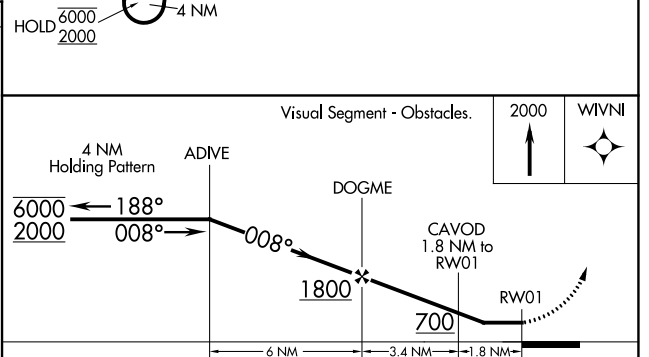
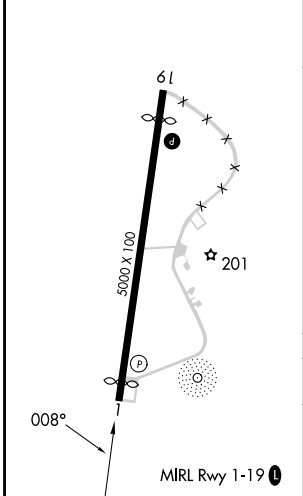
VICKSBURG MUNI (VKS)

RNP APCH.	<p><b>▼</b> Circling NA for Cat D west of Rwy 1-19. Procedure NA at night.  <b>▲</b> Rwy 1 helicopter visibility reduction below 1 SM NA.</p>	MISSED APPROACH: Climb to 2000 direct WIVNI and hold.
-----------	---	---

AWOS-3 <b>118.85</b>	MEMPHIS CENTER <b>132.5 259.1</b>	UNICOM <b>122.8 (CTAF) 0</b>
-------------------------	--------------------------------------	---------------------------------



ELEV 107	TDZE 104
----------	----------



CATEGORY		A	B	C	D
LP	MDA	620-1	516 (600-1)	620-1 3/8	516 (600-1 1/2)
	LNAV MDA	640-1	536 (600-1)	640-1 1/2	536 (600-1 1/2)
	CIRCLING	700-1	593 (600-1)	700-1 1/2 593 (600-1 1/2)	860-2 1/2 753 (800-2 1/2)

VICKSBURG, MISSISSIPPI  
Amdt 1B 13SEP18

32°14'N-90°56'W

# RNAV (GPS) RWY 1

SC-4, 28 NOV 2024 to 26 DEC 2024

SC-4, 28 NOV 2024 to 26 DEC 2024