

APP CRS	Rwy Idg	9007
200°	TDZE	2977
	Apt Elev	2977

RNAV (RNP) RWY 20

GLACIER PARK INTL (GPI)

RNP AR APCH - GPS.

⚠ For uncompensated Baro-VNAV systems, procedure NA below -25°C or above 54°C.

MISSED APPROACH: Climb to 10000 on track 200° to CAUGH, left turn to DOTRE, left turn to DEBRE, and on track 128° to ANGLI and hold, continue climb-in-hold to 10000.

*Missed approach requires minimum climb of 230 feet per NM to 6800.

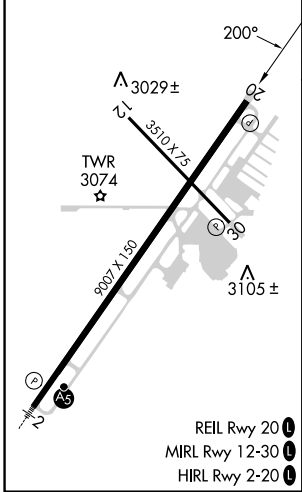
ATIS 132.625	SALT LAKE CENTER 127.075 244.875	GLACIER TOWER* 124.55 (CTAF) 0	GND CON 121.6	UNICOM 122.95
------------------------	--	--	-------------------------	-------------------------



NW-1, 28 NOV 2024 to 26 DEC 2024

NW-1, 28 NOV 2024 to 26 DEC 2024

ELEV 2977	D	TDZE 2977
-----------	----------	-----------



Procedure NA for arrivals at SKOTT on V231 southbound.

MISSED APCH FIX

7 NM $\begin{matrix} 1620 \\ \swarrow \\ 3420 \end{matrix}$ ANGLI

10000	CAUGH	DOTRE	DEBRE	tr 128°	ANGLI	HOBUR
tr 200°						
	TAGUY	OYIKA	IDAYE	LELKE	NIRSE	8000
	RW20	4100	5377	5700	6300	6900
			105°	5700		
			200°			
						GP 3.00°
						TCH 45

CATEGORY	A	B	C	D
RNP 0.10 DA*	3346-1 369 (400-1)			
RNP 0.30 DA*	3418-1 3/8 441 (500-1 3/8)			
RNP 0.30 DA	3637-1 1/8 660 (700-1 1/8)			

AUTHORIZATION REQUIRED