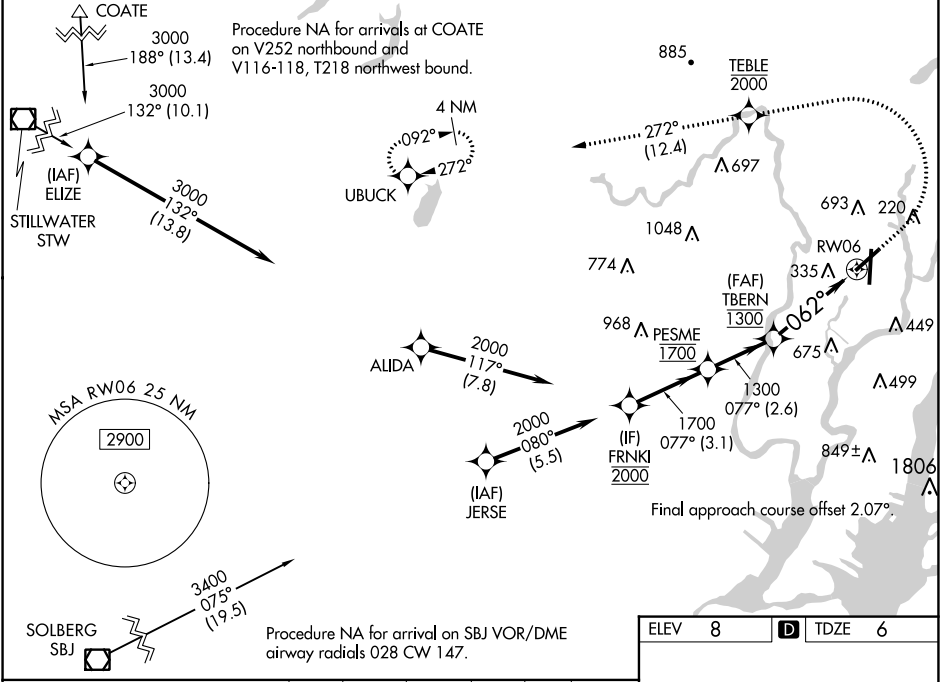


WAAS CH 65634 W06B	APP CRS 062°	Rwy Idg TDZE Apt Elev	6013 6 8
----------------------------------------	------------------------	-----------------------------	-------------------------------------

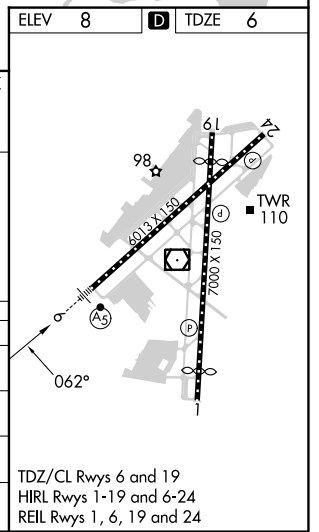
RNAV (GPS) X RWY 6

TETERBORO (TEB)

RNP APCH - GPS. RADAR required.		MALSR	MISSED APPROACH: Climb to 1000, then climbing left turn to 2000 direct TEBLE, cross TEBLE at or below 2000, then climb to 3000 on track 272° to UBUCK and hold.		
<p>▼ Circling NA for Cats B, C and D northwest of Rwy 6 and 19. For uncompensated Baro-VNAV systems, LNAV/VNAV NA below -13°C or above 54°C. For inop ALS, increase LPV all Cats visibility to 1$\frac{1}{8}$ SM, and LNAV/VNAV all Cats visibility to 1$\frac{1}{8}$ SM.</p>					
D-ATIS 114.2 132.85	NEWARK APP CON 127.6 379.9	TETERBORO TOWER 119.5	GND CON 121.9	CLNC DEL 128.05	CPDLC



FRNKI	1000	2000	TEBLE	3000	UBUCK
2000	↑	↻	✦	↑	tr 272°
			2000		
GP 3.00° TCH 55			1.9 NM to RWY 6		
	077°	1700	062°		
	3.1 NM	2.6 NM	2 NM	1.9 NM	
CATEGORY	A	B	C	D	
LPV DA	459/45		453 (500- $\frac{7}{8}$)		
LNAV/VNAV DA	672-1 $\frac{1}{2}$		666 (700-1 $\frac{1}{2}$)		
LNAV MDA	660/24	654 (700- $\frac{1}{2}$)	660-1 $\frac{3}{8}$	654 (700-1 $\frac{3}{8}$)	
CIRCLING	760-1	752 (800-1)	820-2 $\frac{1}{2}$ 812 (900-2 $\frac{1}{2}$)	1040-3 1032 (1100-3)	



NE-2, 28 NOV 2024 to 26 DEC 2024

NE-2, 28 NOV 2024 to 26 DEC 2024