

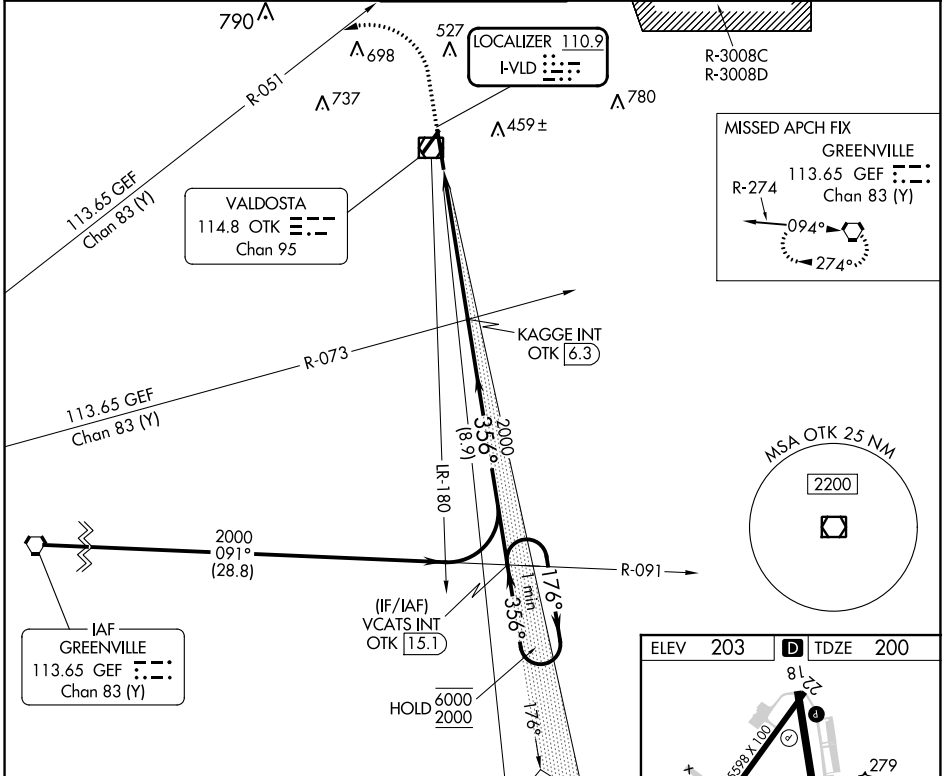
LOC I-VLD 110.9	APP CRS 356°	Rwy Idg 8002
		TDZE 200
		Apr Elev 203

ILS or LOC RWY 36

VALDOSTA RGNL (VLD)

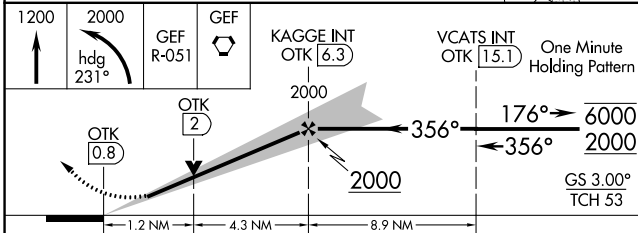
	MALSR 	MISSED APPROACH: Climb to 1200 then climbing left turn to 2000 on heading 231° and GEF R-051 to GEF VORTAC and hold.

ASOS 126.225	VALDOSTA APP CON * 126.6 285.6	VALDOSTA TOWER * 128.35 (CTAF)	GND CON 121.7	UNICOM 122.95
------------------------	--	--	-------------------------	-------------------------



SE-4, 28 NOV 2024 to 26 DEC 2024

SE-4, 28 NOV 2024 to 26 DEC 2024



ELEV 203	TDZE 200
----------	----------

REIL Rwy 18
 HIRL Rwy 18-36
 REIL Rws 4 and 22
 MIRL Rws 4-22
 FAF to MAP 5.5 NM
 Knots: 60, 90, 120, 150, 180
 Min:Sec: 5:30, 3:40, 2:45, 2:12, 1:50

CATEGORY	A	B	C	D	E
S-ILS 36		489-3/4	289 (300-3/4)		
S-LOC 36		640-3/4	440 (500-3/4)		
CIRCLING	640-1 437 (500-1)	700-1 497 (500-1)	900-2 697 (700-1)	1020-2 3/4 817 (900-2 3/4)	1040-3 837 (900-3)