

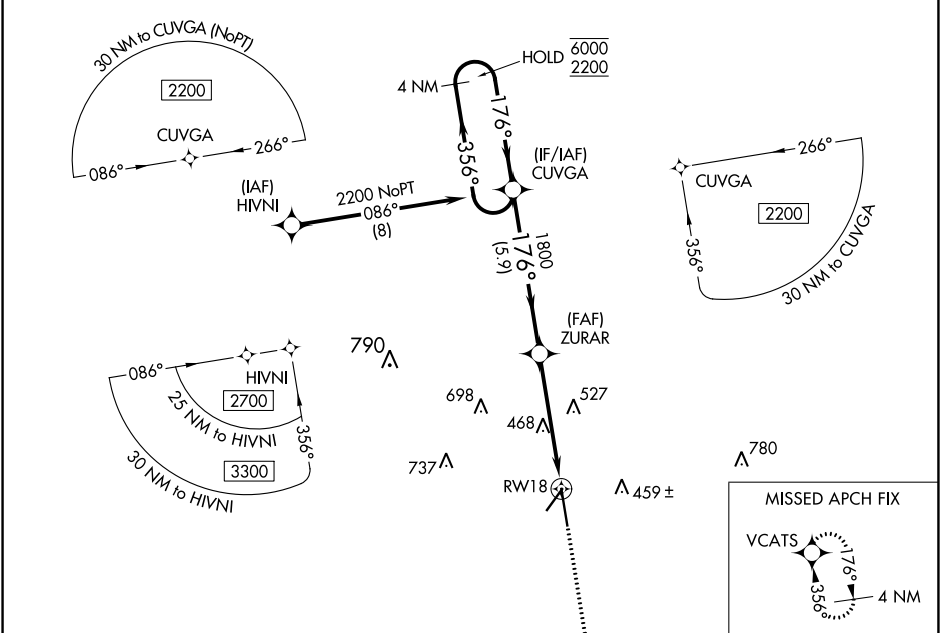
WAAS CH 87101 W18A	APP CRS 176°	Rwy Idg 8002 TDZE 199 Apt Elev 203
--	------------------------	--

RNAV (GPS) RWY 18

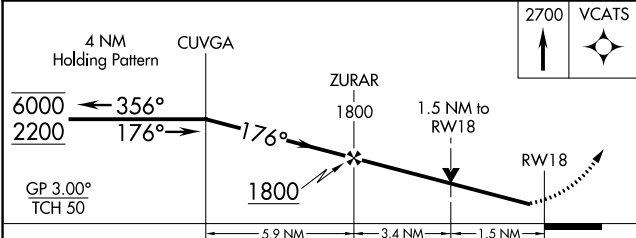
VALDOSTA RGNL (VLD)

RNP APCH - GPS.		<p>▼ Rwy 18 helicopter visibility reduction below 3/4 SM NA. For uncompensated Baro-VNAV systems, LNAV/VNAV NA below -4°C or above 54°C.</p> <p>▲ MISSED APPROACH: Climb to 2700 direct VCATS and hold.</p>	
-----------------	--	---	--

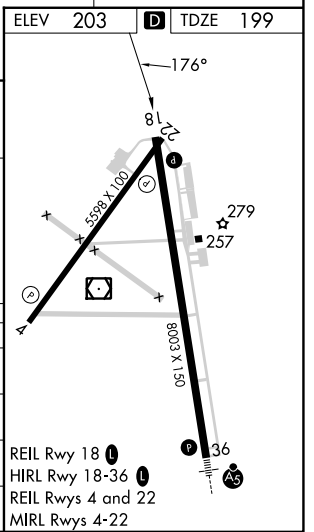
ASOS 126.225	VALDOSTA APP CON * 126.6 285.6	VALDOSTA TOWER * 128.35 (CTAF) 0	GND CON 121.7	UNICOM 122.95
------------------------	--	--	-------------------------	-------------------------



ELEV	203	D	TDZE	199
------	-----	----------	------	-----



CATEGORY	A	B	C	D
LPV DA		454-3/4	255 (300-3/4)	
LNAV/VNAV DA		458-3/4	259 (300-3/4)	
LNAV MDA	720-1	521 (600-1)	720-1 1/2	521 (600-1 1/2)
CIRCLING	720-1	517 (600-1)	900-2	1020-2 3/4
			697 (700-2)	817 (900-2 3/4)



SE-4, 28 NOV 2024 to 26 DEC 2024

SE-4, 28 NOV 2024 to 26 DEC 2024