

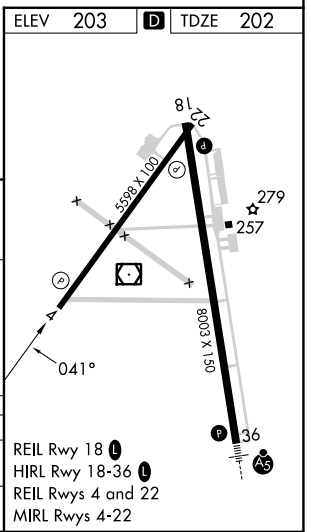
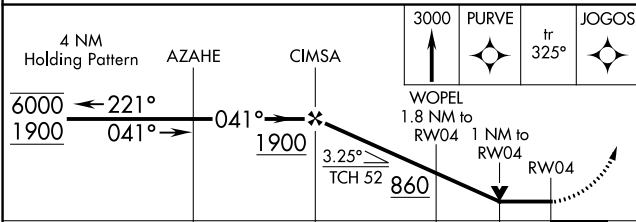
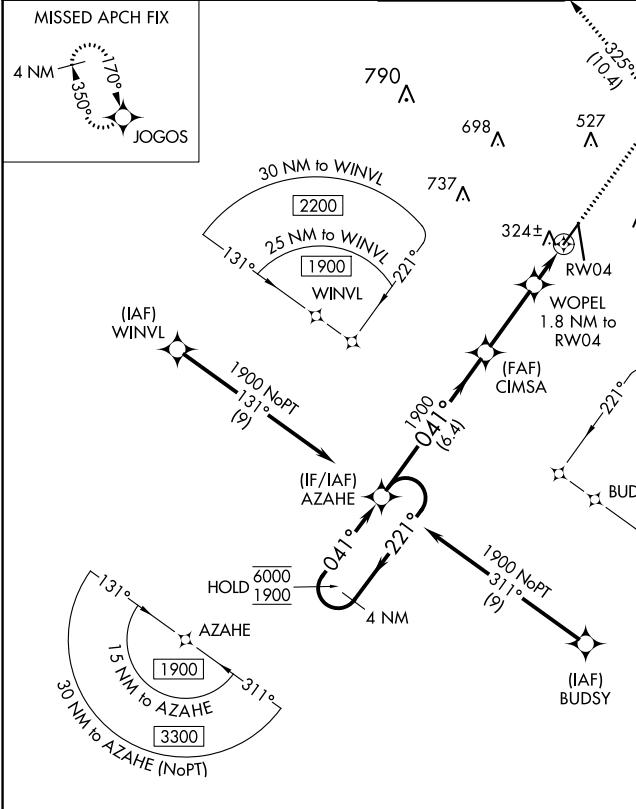
APP CRS	Rwy Idg	<b>5598</b>
<b>041°</b>	TDZE	<b>202</b>
	Apt Elev	<b>203</b>

# RNAV (GPS) RWY 4

VALDOSTA RGNL (VLD)

RNP APCH - GPS.		MISSED APPROACH: Climb to 3000 direct PURVE and on track 325° to JOGOS and hold.	
Rwy 4 helicopter visibility reduction below 3/4 SM NA.			

ASOS <b>126.225</b>	VALDOSTA APP CON * <b>126.6 285.6</b>	VALDOSTA TOWER * <b>128.35 (CTAF) 0</b>	GND CON <b>121.7</b>	UNICOM <b>122.95</b>
------------------------	--	--	-------------------------	-------------------------



CATEGORY	A	B	C	D
LNAV MDA	580-1 378 (400-1)			
CIRCLING	640-1 437 (500-1)	700-1 497 (500-1)	900-2 697 (700-2)	1020-2 3/4 817 (900-2 3/4)

REIL Rwy 18  
HIRL Rwy 18-36  
REIL Rwy 4 and 22  
MIRL Rwy 4-22

SE-4, 28 NOV 2024 to 26 DEC 2024

SE-4, 28 NOV 2024 to 26 DEC 2024