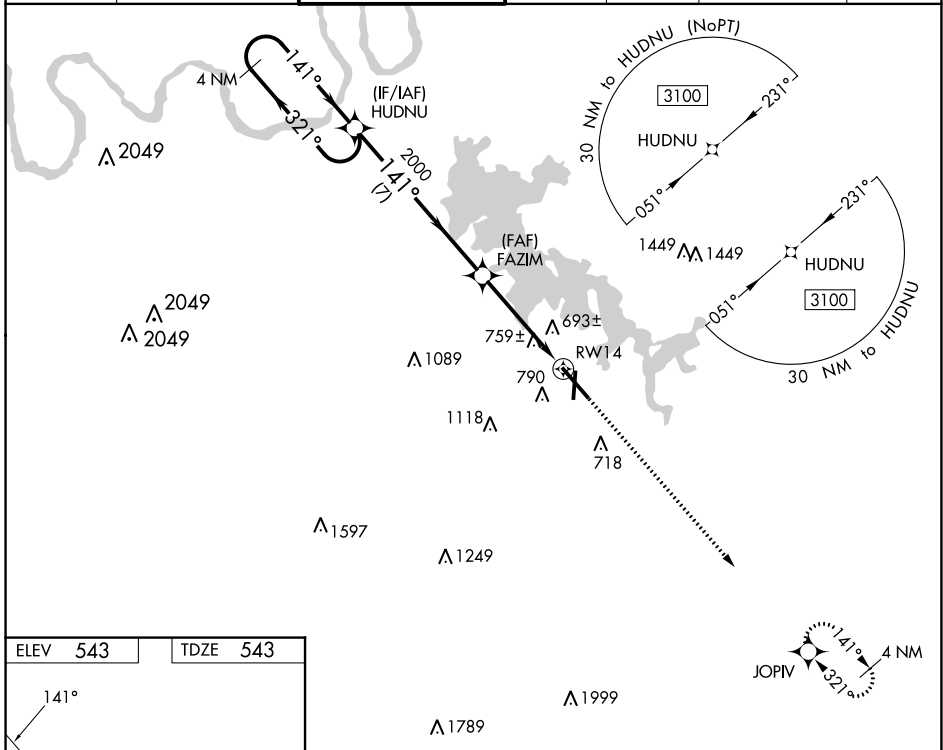


WAAS CH 49036 W14A	APP CRS 141°	Rwy Idg TDZE 543 Apt Elev 543	8038
--	------------------------	---	-------------

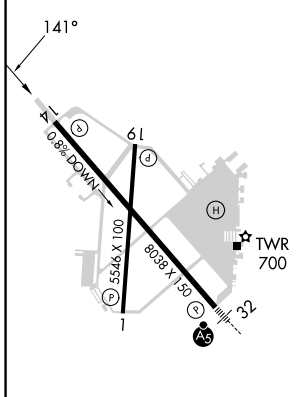
RNAV (GPS) RWY 14

SMYRNA (MQY)

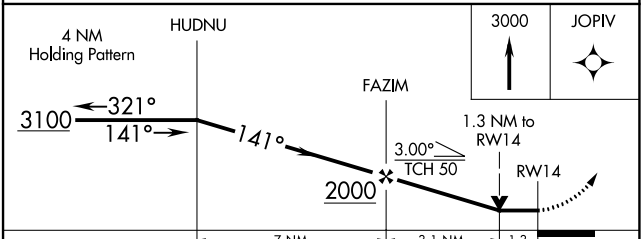
<p>⚠ DME/DME RNP-0.3 NA. When local altimeter setting not received, use Nashville Intl altimeter setting and increase all MDA 40 feet; increase LNAV Cat C and D visibility 1/8 mile, and increase Circling Cat C visibility 1/4 mile. VDP NA when using Nashville Intl altimeter setting. Helicopter visibility reduction below 3/4 SM NA.</p>				<p>MISSED APPROACH: Climb to 3000 direct JOPIV and hold.</p>			
AWOS-3PT 119.125	NASHVILLE APP CON 118.4 360.7	SMYRNA TOWER * 118.5 (CTAF) 233.1	GND CON 121.4	CLNC DEL 121.4	CLNC DEL 121.7 (When twr closed)	UNICOM 122.95	



ELEV 543	TDZE 543
-----------------	-----------------



- REIL Rwy 14 **①**
- HIRL Rwy 14-32 **①**
- MIRL Rwy 1-19 **①**
- REIL Rws 1, 19, and 32 **①**



CATEGORY	A	B	C	D
LP MDA	1020-1	477 (500-1)	1020-1 ³ / ₈	477 (500-1 ³ / ₈)
LNAV MDA	1040-1	497 (500-1)	1040-1 ³ / ₈	497 (500-1 ³ / ₈)
ⓐ CIRCLING	1100-1 557 (600-1)	1200-1 657 (700-1)	1260-2 717 (800-2)	1480-3 937 (1000-3)

SE-1, 28 NOV 2024 to 26 DEC 2024

SE-1, 28 NOV 2024 to 26 DEC 2024