

VOR/DME CMX	APP CRS	Rwy Idg	5201
112.8	260°	TDZE	1075
Chan 75		Apt Elev	1095

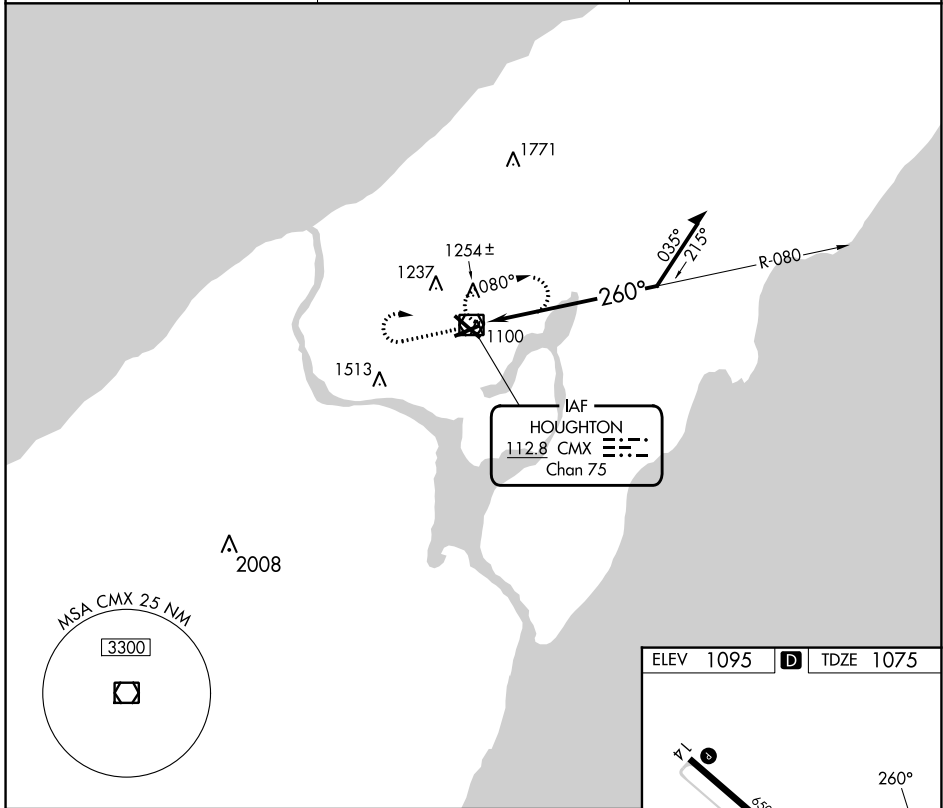
VOR RWY 25

HOUGHTON COUNTY MEML (CMX)

⚠ Rwy 25 helicopter visibility reduction below ¼ SM NA.

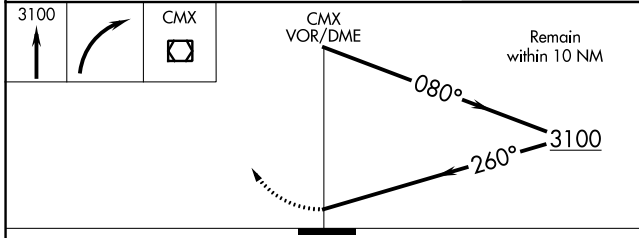
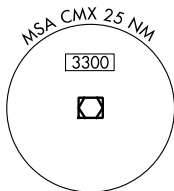
⚠ MISSED APPROACH: Climb to 3100 then right turn direct CMX VOR/DME and hold.

ASOS 125.675	MINNEAPOLIS CENTER 133.55 379.1	UNICOM 122.7 (CTAF) 0
------------------------	---	---------------------------------

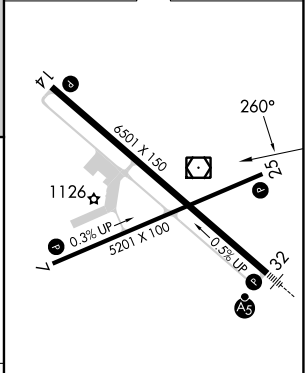


EC-1, 28 NOV 2024 to 26 DEC 2024

EC-1, 28 NOV 2024 to 26 DEC 2024



ELEV 1095 **D** TDZE 1075



CATEGORY	A	B	C	D
S-25	1620-1	545 (600-1)	1620-1 7/8 545 (600-1 3/4)	1620 1 3/4 545 (600-1 3/4)
C CIRCLING	1620-1 525 (600-1)	1660-1 565 (600-1)	1700-1 3/4 605 (700-1 3/4)	1820-2 1/4 725 (800-2 1/4)

MIRL Rwy 7-25 **0**
 REIL Rwy 7, 14 and 25 **0**
 HIRL Rwy 14-32 **0**