

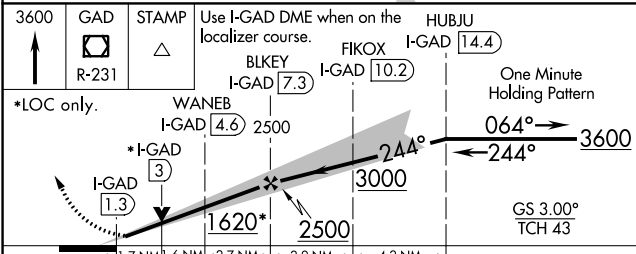
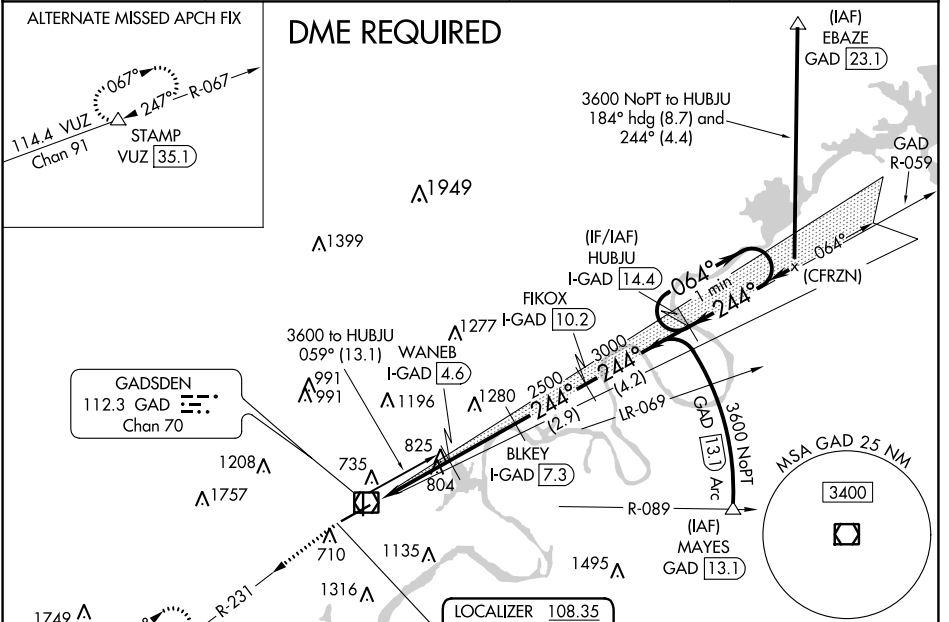
LOC/DME I-GAD 108.35 Chan 20(Y)	APP CRS 244°	Rwy Idg 6802
	TDZE 560	
	Apt Elev 569	

ILS or LOC RWY 24
NORTHEAST ALABAMA RGNL (GAD)

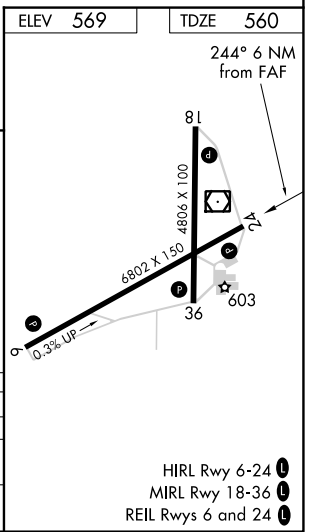
▼ DME required. VDP NA when using Annniston altimeter setting. When local altimeter setting not received, use Annniston altimeter setting and increase DA to 845 feet and all visibilities ¼ SM: increase all MDAs 80 feet and visibility S-LOC Cats C and D ¼ SM and Circling Cat C ½ SM.

▲ MISSED APPROACH: Climb to 3600 on GAD VOR/DME R-231 to STAMP/GAD 10 DME and hold, continue climb-in-hold to 3600.

AWOS-3PT 127.825	BIRMINGHAM APP CON 125.45 279.65	CLNC DEL 120.05 257.7	UNICOM 122.8 (CTAF)
----------------------------	--------------------------------------------	---------------------------------	-------------------------------



ELEV 569	TDZE 560
3600	GAD R-231
STAMP	Use I-GAD DME when on the localizer course.
HUBJU I-GAD 14.4	FIKOX I-GAD 10.2
BLKEY I-GAD 7.3	WANE I-GAD 4.6
2500	2500
3000	3000
1620*	1200
1.7 NM	1.6 NM
2.7 NM	2.9 NM
4.2 NM	
GS 3.00°	TCH 43
CATEGORY	A B C D
S-ILS 24	779-¾ 219 (300-¾)
S-LOC 24	1140-1 580 (600-1) 1140-1¾ 580 (600-1¾)
CIRCLING	1140-1 571 (600-1) 1440-2½ 1680-3 871 (900-2½) 1111 (1200-3)



SE-4, 28 NOV 2024 to 26 DEC 2024

SE-4, 28 NOV 2024 to 26 DEC 2024