

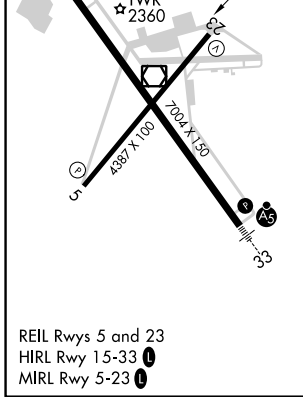
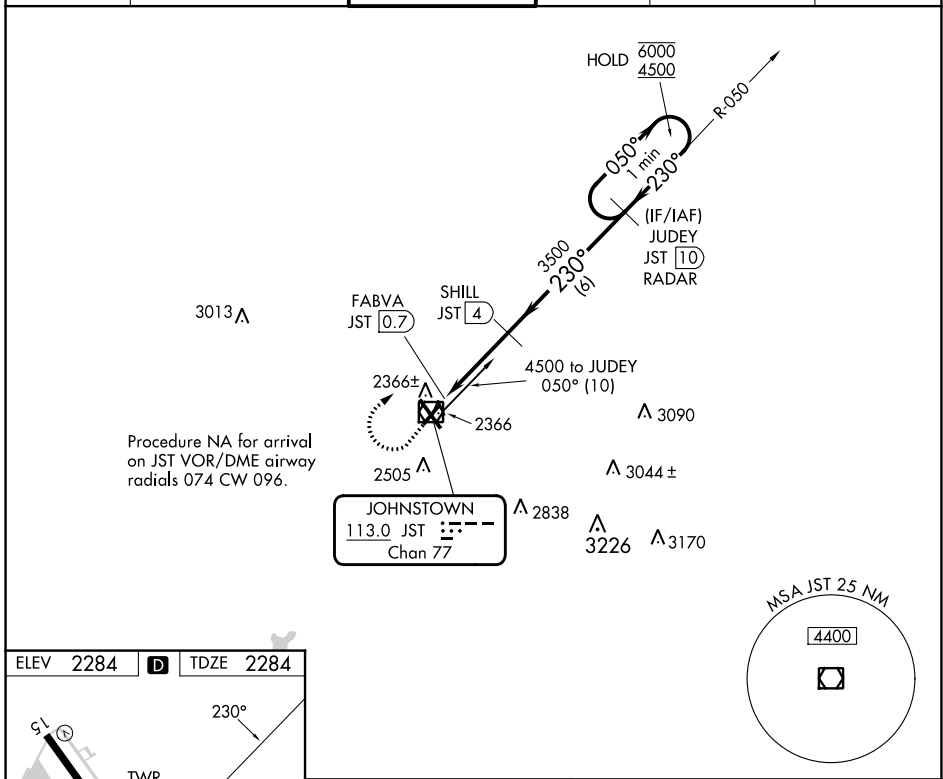
VOR/DME JST	APP CRS	Rwy Idg TDZE	4387
113.0	230°	Apt Elev	2284
Chan 77			

VOR Z RWY 23

JOHN MURTHA JOHNSTOWN/CAMBRIA COUNTY (JST)

DME required.	MISSED APPROACH: Climb to 3000 then climbing right turn to 4500 on heading 075° and JST VOR/DME R-050 to JUDEY/JST 10 DME/RADAR and hold.
⚠ Rwy 23 helicopter visibility reduction below 3/4 SM NA.	

ATIS 118.325	JOHNSTOWN APP CON ★ 121.2 299.2	JOHNSTOWN TOWER ★ 125.75 (CTAF) 0	GND CON 121.6	CLNC DEL 126.85 235.775	UNICOM 122.95
------------------------	-------------------------------------------	----------------------------------------------------	-------------------------	-----------------------------------	-------------------------



3000	4500	JST R-050	JUDEY JST 10 RADAR	One Minute Holding Pattern
↑	hdg 075°			
		JST 1.2	SHILL JST 4	JUDEY JST 10 RADAR
0.4	0.5	2.8 NM	6 NM	
CATEGORY	A	B	C	D
S-23	2620-1 336 (400-1)			
C CIRCLING	2700-1 416 (500-1)	2880-1 596 (600-1)	2880-1½ 596 (600-1½)	3000-2¼ 716 (800-2¼)

VOR Z RWY 23

NE-4, 28 NOV 2024 to 26 DEC 2024

NE-4, 28 NOV 2024 to 26 DEC 2024