

SAN DIEGO, CALIFORNIA

# ILS Y or LOC/DME Y RWY 24R

LOC/DME I-NKX  
**111.15**  
 Chan **48 (Y)**

APCH CRS **243°**  
 Rwy Ldg **8001** **24R**  
 TDZE **477** **475**  
 Arpt Elev **477** **477**

AL-903 [USN] MIRAMAR MCAS (JOE FOSS FLD) (KNKX)

TACAN or RADAR required.



MISSED APPROACH: Climb to 1500, then climbing right turn to 3000 via heading 340°. Expect radar vectors.

▼ \* When ALS inop, increase vis to 3/4 mile.  
 \*\* When ALS inop, increase CAT AB vis to 1 mile, CAT CDE vis to 1 3/8 miles.  
 \*\*\* CAT E circling not authorized S of Rwy 6R-24L.

ATIS ★  
**133.475**  
**352.0**

SOCAL APP CON  
**132.2**  
**269.1**

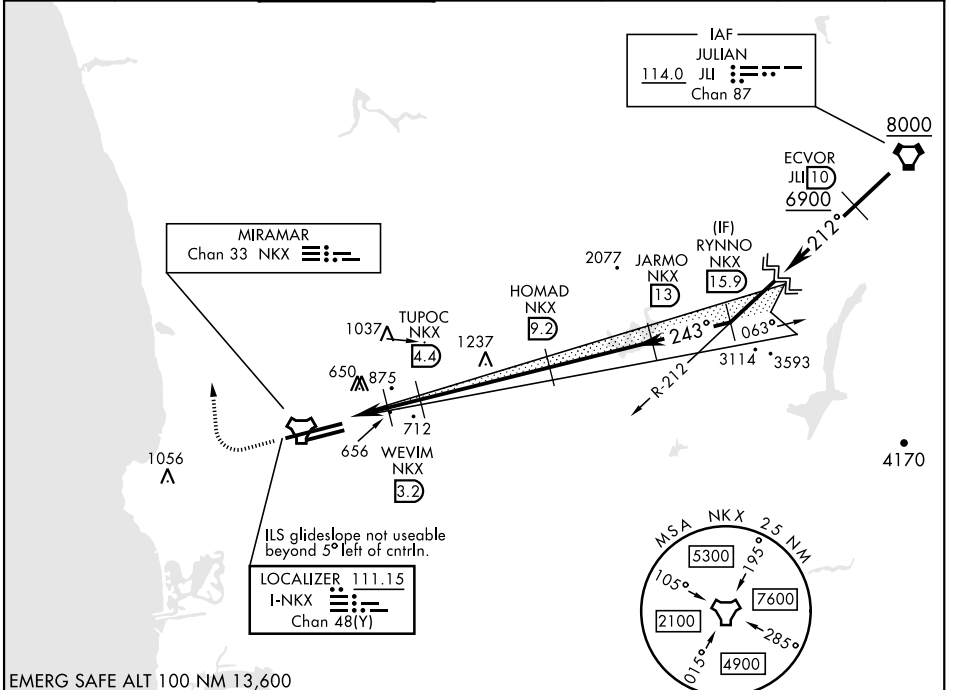
FOSS TOWER ★  
**135.2**  
**298.925**

GND CON  
**128.625**  
**307.325**

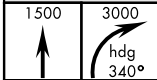
CLNC DEL  
**125.975**  
**254.325**

LA CENTER  
**291.7**

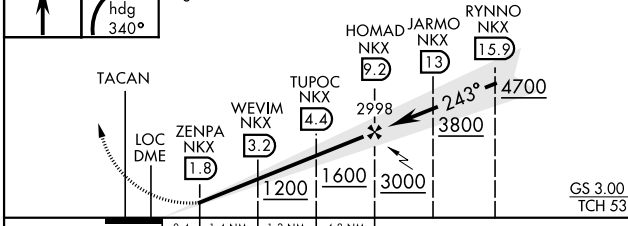
ASR/PAR



EMERG SAFE ALT 100 NM 13,600



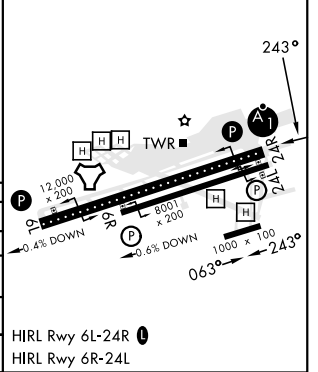
VGS I and descent angles not coincident.



ELEV 477

TDZE 24L 477  
 TDZE 24R 475

CATEGORY	A	B	C	D	E
S-ILS 24R*	675 - 1/2		200	(200-1/2)	
S-LOC/DME 24R**	920-1/2	445 (500-1/2)	920-7/8	445 (500-7/8)	
SIDESTEP 24L	920-1	443 (500-1)	920-1 1/2 443 (500-1 1/2)	920-2 443 (500-2)	
CIRCLING***	940-1 463 (500-1)	960-1 483 (500-1)	960-1 1/2 483 (500-1 1/2)	1180-2 1/4 703 (800-2 1/4)	1360-3 883 (900-3)



SAN DIEGO, CALIFORNIA  
 Orig 14JUL22

32°52'N-117°09'W

MIRAMAR MCAS (JOE FOSS FLD) (KNKX)

# ILS Y or LOC/DME Y RWY 24R

SW-3, 28 NOV 2024 to 26 DEC 2024

SW-3, 28 NOV 2024 to 26 DEC 2024