

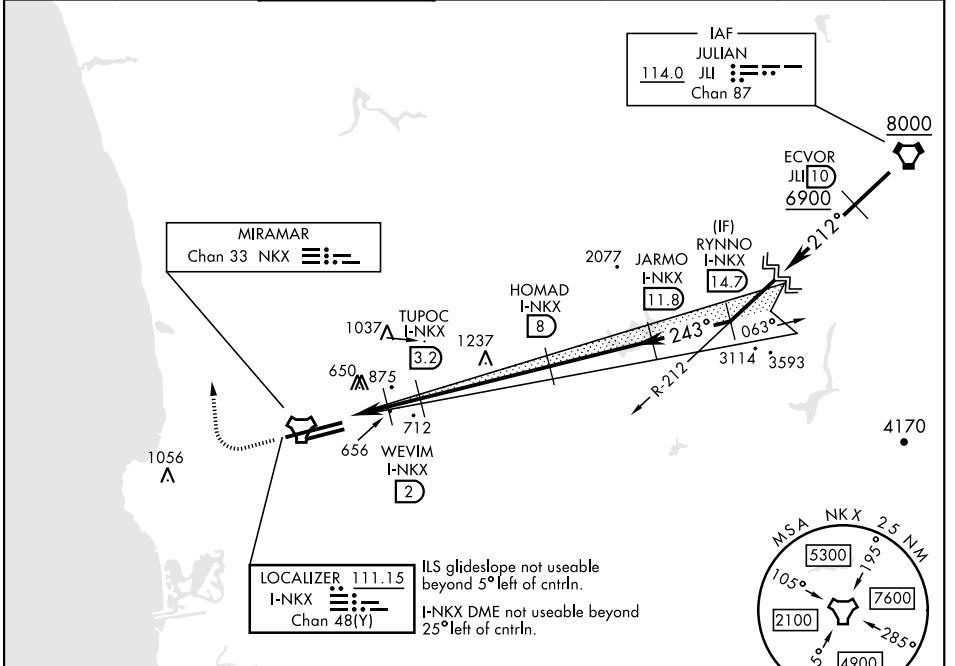
SAN DIEGO, CALIFORNIA

ILS Z or LOC/DME Z RWY 24R

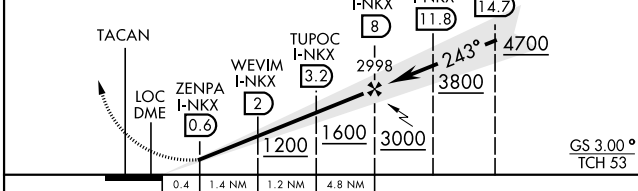
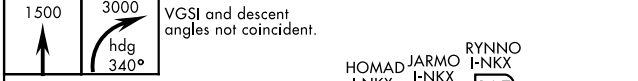
LOC/DME I-NKX 111.15 Chan 48(Y)	APCH CRS 243°	Rwy Ldg 8001	24L 12,000	24R 475
		TDZE 477		
		Arpt Elev 477		

AL-903 [USN] MIRAMAR MCAS (JOE FOSS FLD) (KNKX)

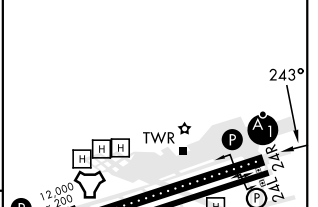
DME and RADAR required.				MISSED APPROACH: Climb to 1500, then climbing right turn to 3000 via heading 340°. Expect radar vectors.		
<p>▼ * When ALS inop, increase vis to ¾ mile. ** When ALS inop, increase CAT AB vis to 1 mile, CAT CDE vis to 1 ½ miles. *** CAT E circling not authorized S of Rwy 6R-24L.</p>						
ATIS ★ 133.475 352.0	SOCAL APP CON 132.2 269.1	FOSS TOWER ★ 135.2 298.925	GND CON 128.625 307.325	CLNC DEL 125.975 254.325	LA CENTER 291.7	ASR/ PAR



EMERG SAFE ALT 100 NM 13,600



ELEV	477	TDZE 24L	477
		TDZE 24R	475



CATEGORY	A	B	C	D	E
S-ILS 24R*	675 - ½		200	(200-½)	
S-LOC/DME 24R**	920-½	445 (500-½)	920-¾	445 (500-¾)	
SIDESTEP 24L	920-1	443 (500-1)	920-1½ 443 (500-1½)	920-2 443 (500-2)	
CIRCLING***	940-1 463 (500-1)	960-1 483 (500-1)	960-1½ 483 (500-1½)	1180-2¼ 703 (800-2¼)	1360-3 883 (900-3)

HIRL Rwy 6L-24R
 HIRL Rwy 6R-24L

SAN DIEGO, CALIFORNIA
Amdt 1 29DEC22

32°52'N-117°09'W MIRAMAR MCAS (JOE FOSS FLD) (KNKX)

ILS Z or LOC/DME Z RWY 24R

SW-3, 28 NOV 2024 to 26 DEC 2024

SW-3, 28 NOV 2024 to 26 DEC 2024