

SAN DIEGO, CALIFORNIA

RNAV (GPS) RWY 24R

WAAS CH 61450 W24B	APCH CRS 243°	Rwy Idg 12,000 TDZE 475 Arpt Elev 477
--------------------------	------------------	---------------------------------------------

AL-903 [USN]

MIRAMAR MCAS (JOE FOSS FLD) (KNKX)

RNP APCH

- When ALS inop, increase vis to 3/4 mile.
- When ALS inop, increase vis to 3/4 mile.
- When ALS inop, increase CAT AB vis to 1 mile, CAT CD vis to 1 3/4 miles.

ALSF-1

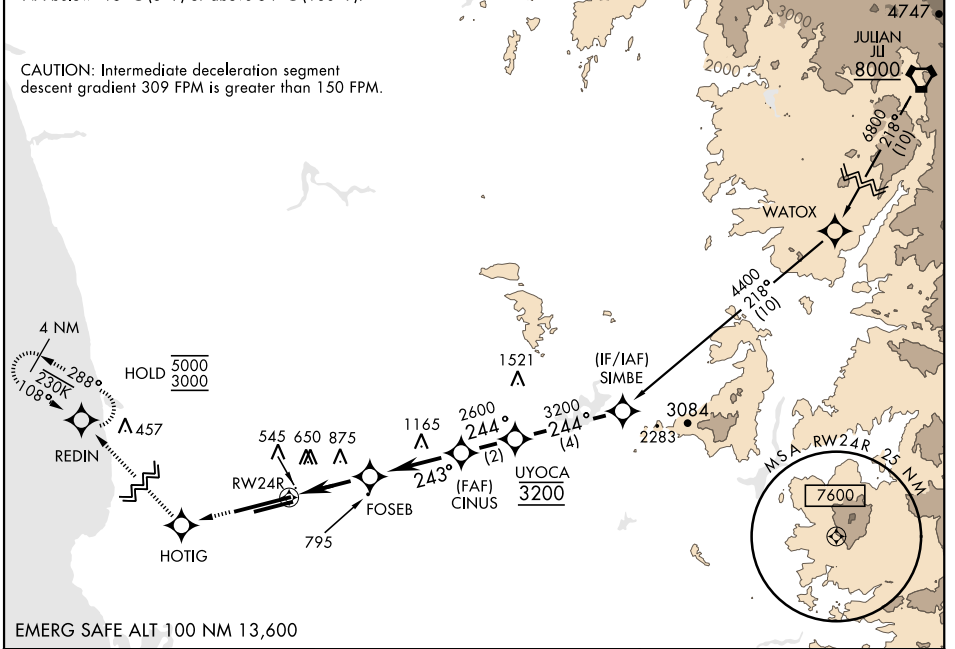


MISSED APPROACH: Climb to 3000 direct HOTIG, 288° track to REDIN and hold.

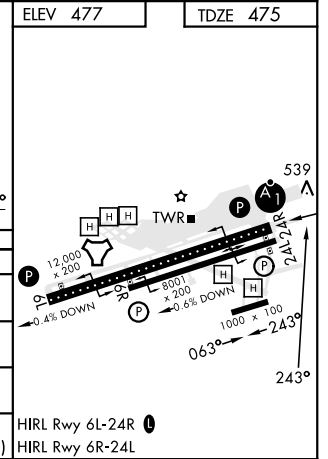
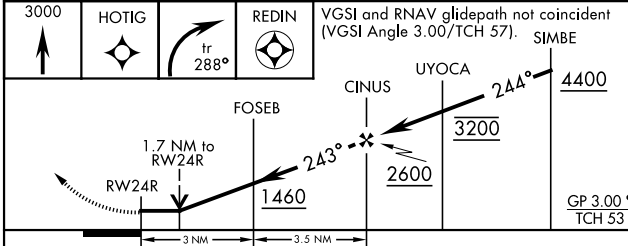
ATIS ★ 352.0 133.475	SOCAL APP CON 132.2 269.1	FOSS TOWER ★ 135.2 298.925	GND CON 128.625 307.325	CLNC DEL 125.975 254.325	LA CENTER 291.7	ASR/ PAR
----------------------------	---------------------------------	----------------------------------	-------------------------------	--------------------------------	--------------------	-------------

For uncompensated Baro-VNAV systems, procedure NA below -15°C (5°F) or above 54°C (130°F).

CAUTION: Intermediate deceleration segment descent gradient 309 FPM is greater than 150 FPM.



EMERG SAFE ALT 100 NM 13,600



CATEGORY	A	B	C	D
LPV DA *		675-1/2	200	(200-1/2)
LNAV/VNAV DA **		725-1/2	250	(300-1/2)
LNAV MDA ***	1060-1/2	585 (600-1/2)	1060-1 1/4	585 (600-1 1/4)
CIRCLING	1060-1	583 (600-1)	1060-1 3/4 583 (600-1 3/4)	1180-2 1/4 703 (800-2 1/4)

HIRL Rwy 6L-24R
HIRL Rwy 6R-24L

SAN DIEGO, CALIFORNIA
Amdt 4 27JAN22

32°52'N-117°09'W

MIRAMAR MCAS (JOE FOSS FLD) (KNKX)

RNAV (GPS) RWY 24R

SW-3, 28 NOV 2024 to 26 DEC 2024

SW-3, 28 NOV 2024 to 26 DEC 2024